

Standard revision of the calculation of price indices of market services

The purpose of revision is updating of the system of price indices especially due to accumulated changes in real described section. This updating is focus on selected files of the representatives and reporting units, weight structure, price base and the concept of calculation. Revision of price indices of market services is doing every 5 years.

During the year 2023 a complex standard revision of price indices in market services had taken place. Since January 2024 was started the calculation on the structure of 2021 sales with the new price base “average 2021 = 100”. The newly calculated technical indices were chained to the index basis “2015 average = 100” in December 2023. This preserves the continuity of the existing time series.

Within some divisions of services included in CZ-CPA some following groups of services were newly classified:

- J59 Motion picture, video and television programme production services, sound recording and music publishing
- J60 Programming and broadcasting services

The following service divisions were cancelled:

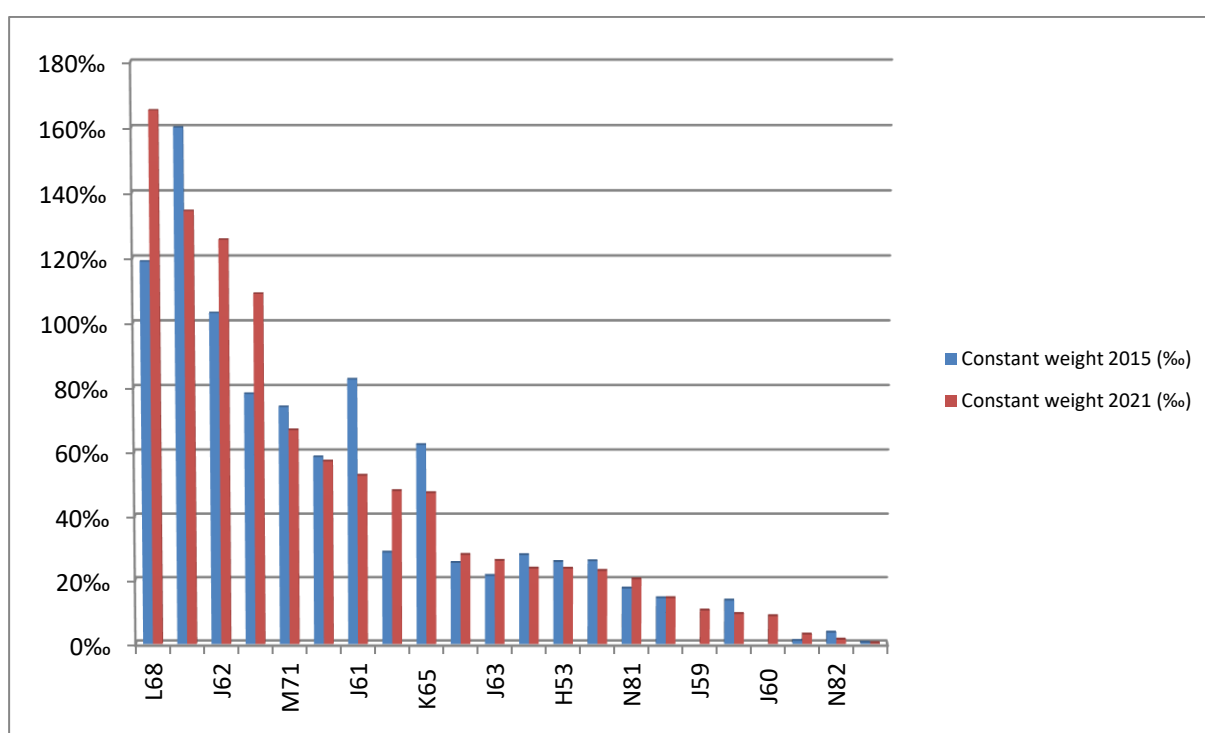
- J64 Financial services except insurance and pension funding

Table: The structure of the monitored sections of market services and their weight structure in years 2015 and 2021

Code	Name	Weights 2015 (‰)	Weights 2021 (‰)
	<u>TOTAL</u>	1000,000	1000,000
H49	Land transport services and transport services via pipelines	160,004	134,467
H50	Water transport services	0,425	0,283
H52	Warehousing and support services for transportation	78,125	109,031
H53	Postal and courier services	25,835	23,748
J58	Publishing services	13,680	9,456
J59	Motion picture, video and television programme production services, sound recording and music publishing	-	10,539
J60	Programming and broadcasting services	-	8,752
J61	Telecommunication services	82,623	52,85
J62	Computer programming, consultancy and relates services	103,070	125,636
J63	Information services	21,456	26,195
K65	Insurance, reinsurance and pension funding except compulsory social security	62,381	47,445
L68	Real estate services	118,913	165,228

M69	Law and accounting services	28,802	48,081
M70	Services of head offices; management consulting services	25,548	28,073
M71	Architectural and engineering services, technical testing and analysis	74,078	66,94
M73	Advertising and market research services	58,563	57,272
M74	Other professional, scientific and technical services	0,966	2,965
N77	Rental and leasing services	27,997	23,776
N78	Employment services	26,076	23,049
N80	Security and investigation services	14,435	14,46
N81	Services to buildings and landscape	17,475	20,391
N82	Office administrative, office support and other business support services	3,564	1,361

Graph: Weight structure in years 2015 and 2021 (v ‰)



The history of revision after the year 1989

The first price indices of selected market services (Inland freight transport and sewerage) were calculated on the 1990 weights, with price and index base “January 1990 = 100”. These price indices were calculated in January 1994.

After revision 1994, indices for the period 1995 – 2000 were calculated on the 1993 weights, with price and index base December 1993 and the derived index base “1994 average = 100” and “1995 average = 100”.

After revision 2000, indices for the period 2001 – 2006 were calculated on the 1999 weights, with price and index base “December 1999 = 100” and the derived index base “2000 average = 100”.

After revision 2005, indices for the period 2007 – 2012 were calculated on the 2005 weights with price and index base “December 2005 = 100”.

During the year 2008 was changed the classification and since January 2009 are all price indices set up, calculated and published in CZ-CPA 2008 classification.

After revision in 2012, the indices for the period 2013 to 2017 were calculated on the weights from 2011 to index base “2005 average = 100”.

After revision in 2017, the indices for the period 2018 to 2023 were calculated on the weights from 2015 to index base “2015 average = 100”.

After revision in 2023, the indices for the period 2024 to 2027 are calculated on the weights from 2021 to index base “2015 average = 100”.