

GUIDE FOR AUTHORS

Rudolf Novak,¹ Institution Name, City, Country

Jonathan Davis, Institution Name, City, Country

ABSTRACT

(max. 160 words)

Statistika: Statistics and Economy Journal is professional double-blind peer reviewed open access journal included in the **Web of Science – Emerging Sources Citation Index** (since 2016) of the **Web of Science Core Collection** (Impact Factor), in the international citation database of peer-reviewed literature **Scopus** (since 2015), **EBSCO** (since 2013) and in others.

105th year (2025) of the series of professional statistics and economy journals of the State Statistical Service in the Czech Republic: *Statistika* (since 1964), *Statistika a kontrola* (1962–1963), *Statistický obzor* (1931–1961) and *Československý statistický věstník* (1920–1930).

KEYWORDS

(max. 6 words/phrases)

Journal of Statistika, Czech Statistical Office, statistics, economy

JEL CODE

Z19²

INTRODUCTION

We publish articles focused at theoretical and applied statistics, mathematical and statistical methods, conception of official (state) statistics, statistical education, applied economics and econometrics, economic, social and environmental analyses, economic indicators, social and environmental issues in terms of statistics or economics, and regional development issues.

The journal of Statistika has the following sections:

¹ Affiliation, adress. Corresponding author: e-mail: rudolf.novak@domainname.cz, phone: (+420)111222333. ORCID (URL).

² Available at: <<https://www.aeaweb.org/econlit/jelCodes.php?view=econlit>>.

The *Analyses* section publishes complex and advanced analyses based on the official statistics data focused on economic, environmental, social and other topics. Papers shall have up to 22 pages (Times New Roman, 1.5-spaced pages).

Discussion brings the opportunity to openly discuss the current or more general statistical or economic issues, in short what the authors would like to contribute to the scientific debate. Contribution shall have up to 12 pages (Times New Roman, 1.5-spaced pages).

In the *Methodology* section we publish articles dealing with possible approaches and methods of researching and exploring social, economic, environmental and other phenomena or indicators. Articles shall have up to 22 pages (Times New Roman, 1.5-spaced pages).

Consultation contains papers focused primarily on new perspectives or innovative approaches in statistics or economics about which the authors would like to inform the professional public. Consultation shall have up to 12 pages (Times New Roman, 1.5-spaced pages).

Book Review evaluates selected titles of recent books from the official statistics field. Reviews shall have up to 2 pages (Times New Roman, 1.5-spaced pages).

The *Information* section includes informative (descriptive) texts, information on latest publications, or recent and upcoming scientific conferences. Recommended range of information is max. 10 pages (Times New Roman, 1.5-spaced pages).

1 LANGUAGE

The submission language is English only. Authors are expected to refer to a native language speaker in case they are not sure of language quality of their papers.

1.1 Recommended paper structure

Title – Authors and contacts – Abstract (max. 160 words) – Keywords (max. 6 words/phrases) – JEL code – Introduction – Literature survey – Methods – Results – Discussion – Conclusion – Acknowledgments – References – Annex/Appendix – Tables and Figures.

Tables and figures placed in the Annex (Appendix) we distinguish with the initial capital A (Table A1, Figure A1, etc.). For the review proces please place tables and figures in the text. In the final papers for print please place them at the end of the paper (figures extra in Excel with data sources).

1.2 Main text format

Times New Roman 12 (main text), 1.5 spacing between lines. Page numbers in the lower right-hand corner. *Italics* can be used in the text if necessary. *Do not* use **bold** or underline in the text. Paper parts numbering: 1, 1.1, 1.2, etc.

1.2.1 Footnotes

Footnotes should be used sparingly. Do not use endnotes. Do not use footnotes for citing references (except headings).

1.2.2 References in the text

Place references in the text enclosing authors' names and the year of the reference, e.g. „...White (2009) points out that...”, „...recent literature (Atkinson and Black, 2010a, 2010b, 2011; Chase et al., 2011: 12–14) conclude...”. Note the use of alphabetical order. Between the names of two authors please insert „and”, for more authors we recommend to put „et al.”. Include page numbers if appropriate.

2 TABLES, FIGURES, FORMULAS

2.1 Tables and numbers

Provide each table on a separate page. Indicate position of the table by placing in the text:

insert Table 1 here.

Number tables in order of their appearance in the text: Table 1, Table 2, etc. Each table should be titled (e.g. Table 1 Self-explanatory title). For the review process may be tables placed in the text.

Refer to tables using their numbers (e.g. see Table 1, Table A1 in the Annex). Try to break one large table into several smaller tables, whenever possible. Specify the data sources below all tables.

Separate thousands with a *space* (e.g. 1 528 000) and decimal points with a *dot* (e.g. 1.0). Tables should be prepared for black and white print.

2.2 Figures and pictures/maps

Figure is any graphical object other than table. Attach each figure as a separate file. Indicate position of the figure by placing in the text:

insert Figure 1 here.

Number figures in order of their appearance in the text: Figure 1, Figure 2, etc. Each figure should be titled (e.g. Figure 1 Self-explanatory title). Refer to figures using their numbers (e.g. see Figure 1, Figure A1 in the Annex). For the review process may be figures placed in the text.

Figures should be prepared for black and white print accompanied by the *.xls, *.xlsx table with the **source data (extra in MS Excel)**. Specify the data sources below all figures.

Please provide cartograms in vector format. Other graphical objects should also be prepared for black and white print and provided in *.tif, *.jpg, *.eps formats.

2.3 Formulas

Formulas should be numbered and prepared in equation editor in the same text format (Times 12) as the main text. Separate thousands with a *space* (e.g. 1 528 000) and decimal points with a *dot* (e.g. 1.0).

Sample formula:

$$y_i = \sum_{j=1}^m x_{ij} \beta_j + \varepsilon_i. \quad (1)$$

2.4 Country names

The short version "Czechia" is recommended to use wherever it is not necessary to use the formal name "Czech Republic". We ask to use primary the short name "Czechia", only in cases of a stylistically justified necessity (e.g. in several sentences in a row) is it possible to use the formal name "Czech Republic".

CONCLUSION

Please email your papers in *.doc, *.docx or *.pdf formats to statistika.journal@csu.gov.cz. All papers are subject to double-blind peer review procedure. Articles for the review process are accepted continuously and may contain tables and figures placed in the text (for final graphical typesetting shall be supplied separately as specified in the instructions). You will be kept informed by our Managing Editor about all necessary details and terms.

ACKNOWLEDGMENT

Please be informed about our **Publication Ethics** rules (i.e. *Authors responsibilities*) published at: http://www.csu.gov.cz/statistika_journal>. You are required to **respect** these rules.

REFERENCES

Arrange list of references alphabetically. Use the following reference styles:

[book]

HICKS, J. (1939). *Value and Capital: An Inquiry into Some Fundamental Principles of Economic Theory*. 1st Ed. Oxford: Clarendon Press.

[chapter in an edited book]

DASGUPTA, P. et al. (1999). Intergenerational Equity, Social Discount Rates and Global Warming. In: PORTNEY, P., WEYANT, J. (eds.) *Discounting and Intergenerational Equity*, Washington, D.C.: Resources for the Future.

[on-line source]

CZECH COAL. (2008). *Annual Report and Financial Statement 2007* [online]. Prague: Czech Coal. [cit. 20.9.2008]. <<http://www.czechcoal.cz/cs/ur/zprava/ur2007cz.pdf>>.

[article in a journal]

HRONOVÁ, S., HINDLS, R., ČABLA, A. (2011). Conjunctural Evolution of the Czech Economy. *Statistika: Statistics and Economy Journal*, 91(3): 4–17.

[article in a journal with DOI]

STEWART, M. B. (2004). The Employment Effects of the National Minimum Wage [online]. *The Economic Journal*, 114(494): 110–116. <<http://doi.org/10.1111/j.0013-0133.2003.0020.x>>.

Please **add DOI numbers** to all articles where appropriate (prescribed format = link, see above). **All titles from the list of references must be cited in the text.**

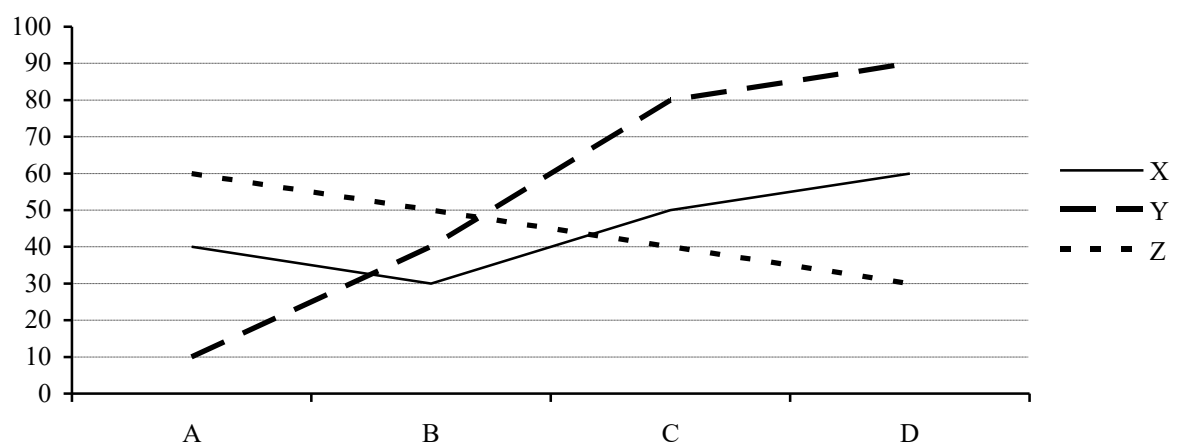
ANNEX/APPENDIX

Table A1 Annex table

Indicator	X	Y
A	0.3	10.0
B	0.6	15.0
Total	1.0	25.0

Source: Own construction

Figure A1 Annex figure (in %)



Source: Eurostat

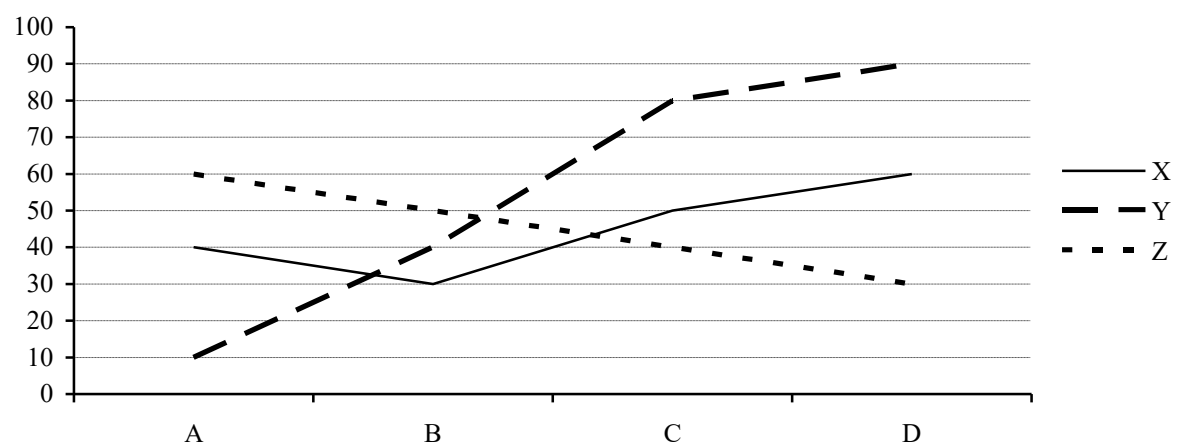
TABLES AND FIGURES

Table 1 Sample table

Indicator	X	Y	Z
A	0.1	12.0	0.6
B	0.2	13.0	0.7
C	0.3	14.0	0.8
D	0.4	15.0	0.9
Total	1.0	54.0	3.0

Source: Own construction

Figure 1 Sample figure (in %)



Source: CZSO