

Standard revision of the calculation of price indices of market services

The purpose of revision is updating of the system of price indices especially due to accumulated changes in real described section. This updating is focus on selected files of the representatives and reporting units, weight structure, price base and the concept of calculation. Revision of price indices of market services is doing every 5 years.

During the year 2017 a complex standard revision of price indices in market services had taken place. Since January 2018 was started the calculation on the structure of 2015 sales with the new price base “average 2015 = 100”. The new time series of indices with base” average 2015 = 100” replaced the time series of indices with base ”average 2005 = 100”. Previous published indices haven’t been revised.

Within some divisions of services included in CZ-CPA some following groups of services were newly classified:

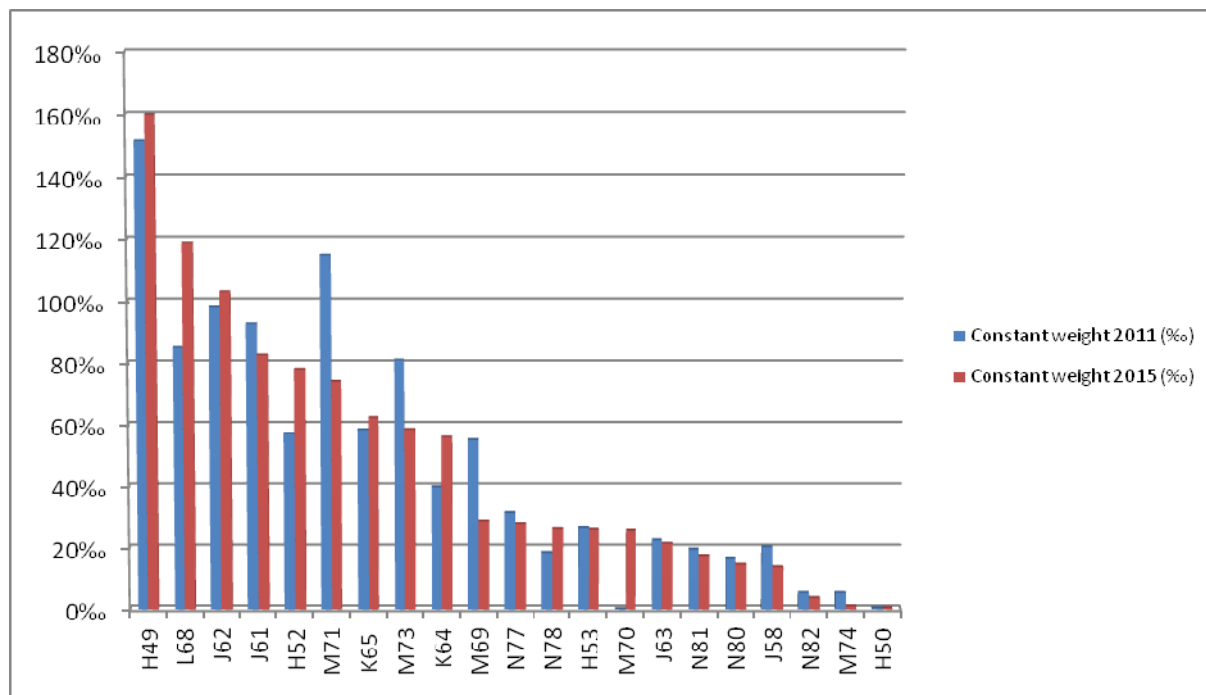
M702 Management consulting

Table: The structure of the monitored sections of market services and their weight structure in years 2011 and 2015

Code	Name	Weights 2011 (‰)	Weights 2015 (‰)
	<u>TOTAL</u>	1000,000	1000,000
H49	Land transport services and transport services via pipelines	151,622	160,004
H50	Water transport services	0,403	0,425
H52	Warehousing and support services for transportation	57,229	78,125
H53	Postal and courier services	26,327	25,835
J58	Publishing services	20,370	13,680
J61	Telecommunication services	92,690	82,623
J62	Computer programming, consultancy and relates services	98,325	103,070
J63	Information services	22,555	21,456
K64	Financial services except insurance and pension funding	39,884	55,984
K65	Insurance, reinsurance and pension funding except compulsory social security	58,450	62,381
L68	Real estate services	85,018	118,913
M69	Law and accounting services	55,101	28,802
M70	Services of head offices; management consulting services	-	25,548
M71	Architectural and engineering services, technical testing and analysis	114,737	74,078
M73	Advertising and market research services	81,075	58,563
M74	Other professional, scientific and technical services	5,179	0,966
N77	Rental and leasing services	31,444	27,997
N78	Employment services	18,439	26,076

N80	Security and investigation services	16,404	14,435
N81	Services to buildings and landscape	19,567	17,475
N82	Office administrative, office support and other business support services	5,182	3,564

Graph: Weight structure in years 2011 and 2015 (v ‰)



Changing of the weights in the compared periods was caused by changing the amount of production and also by changing in the concept of the coverage of selected services.

The history of revision after the year 1989

The first price indices of selected market services (Inland freight transport and sewerage) were calculated on the 1990 weights, with price and index base “January 1990 = 100”. These prices indices were calculated in January 1994.

After revision 1994, indices for the period 1995 – 2000 were calculated on the 1993 weights, with price and index base December 1993 and the derived index base “1994 average = 100” and “1995 average = 100”.

After revision 2000, indices for the period 2001 – 2006 were calculated on the 1999 weights, with price and index base “December 1999 = 100” and the derived index base “2000 average = 100”.

After revision 2005, indices for the period 2007 – 2012 were calculated on the 2005 weights with price and index base “December 2005 = 100”.

During the year 2008 was changed the classification and since January 2009 are all price indices set up, calculated and published in CZ-CPA 2008 classification.

After revision in 2012, the indices for the period 2013 to 2017 were calculated on the weights from 2011 to index base “2005 average = 100”.

After revision in 2017, the indices for the period 2018 to 2022 are calculated on the weights from 2015 to index base “2015 average = 100”.