

ANALYSIS

19 May 2014

External Trade Price Indices Development in Q1 2014

Export prices in Q1 2014, compared to Q4 2013, increased by 2.0%, import prices grew by 1.6%, and terms of trade reached 100.4%. Compared year-on year (y-o-y) export prices in Q1 2014 increased by 4.1%, import prices grew by 2.4%, and terms of trade reached 101.7%.

Quarter-on-quarter (q-o-q) comparison:

Export prices in Q1 2014, compared to Q4 2013, increased by 2.0% (in Q4 2013 they increased by 2.4%). In export prices, among the more important groups of goods, prices increased most in 'crude materials, inedible, except fuels' by 4.1%, 'manufactured goods classified chiefly by material' by 2.9%, and in 'machinery and transport equipment' by 2.0%. The prices of 'mineral fuels, lubricants and related materials' fell by 1.7%.

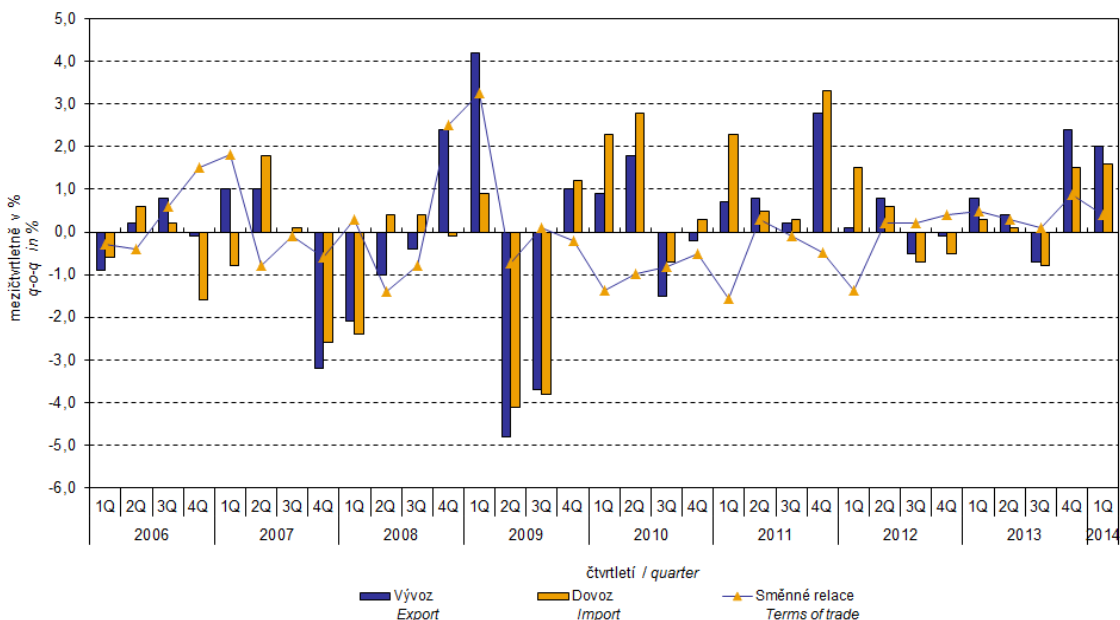
Import prices in Q1 2014, compared to Q4 2013, increased by 1.6% (in Q4 2013 they increased by 1.5%). In import prices rather important price increases were recorded for 'food and live animals' by 4.3%, 'manufactured goods classified chiefly by material' by 1.8%, and 'machinery and transport equipment' by 1.3%. The only prices that fell were prices of 'animal and vegetable oils, fats and waxes' by 0.5%.

The **terms of trade figures in Q1 2014, compared to Q4 2013, reached 100.4%** (in Q4 2013 they were 100.9%). Rather important positive values of terms of trade were reached in 'chemicals and related products' (101.7%), 'manufactured goods classified chiefly by material' (101.1%) and in 'machinery and transport equipment' (100.7%). Among important groups of goods, negative values of terms of trade were recorded namely in 'food and live animals' (97.1) and in 'mineral fuels, lubricants and related materials' (97.4%).

ANALYSIS

Graf č. 1
Graph No. 1

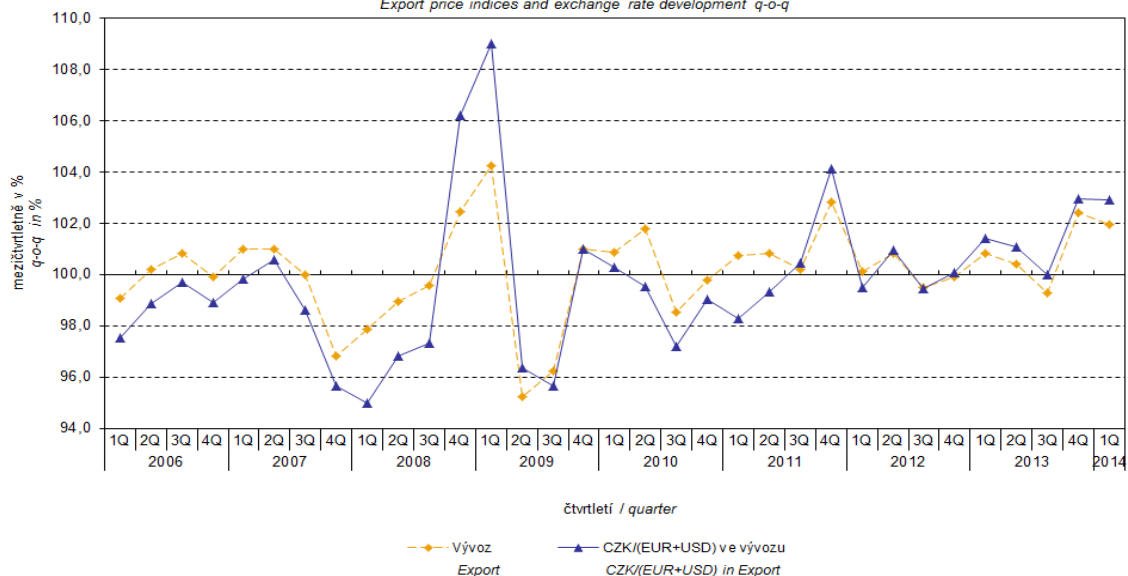
Vývoj cen v zahraničním obchodě mezičtvrtletně
Price trends in external trade q-o-q



The external trade price development was also significantly affected by the CZK exchange rate to the major foreign currencies. The q-o-q exchange rate index includes two most important currencies from the Czech Republic's external trade point of view, i.e. EUR and USD. Q-o-q indices of the CZK exchange rate to these currencies were weighted by the weight, which pertains to those foreign currencies in the export price index and import price index, respectively.

Graf č. 2
Graph No. 2

Indexy cen vývozu a vývoj kurzu mezičtvrtletně
Export price indices and exchange rate development q-o-q



Information Services Unit – Headquarters

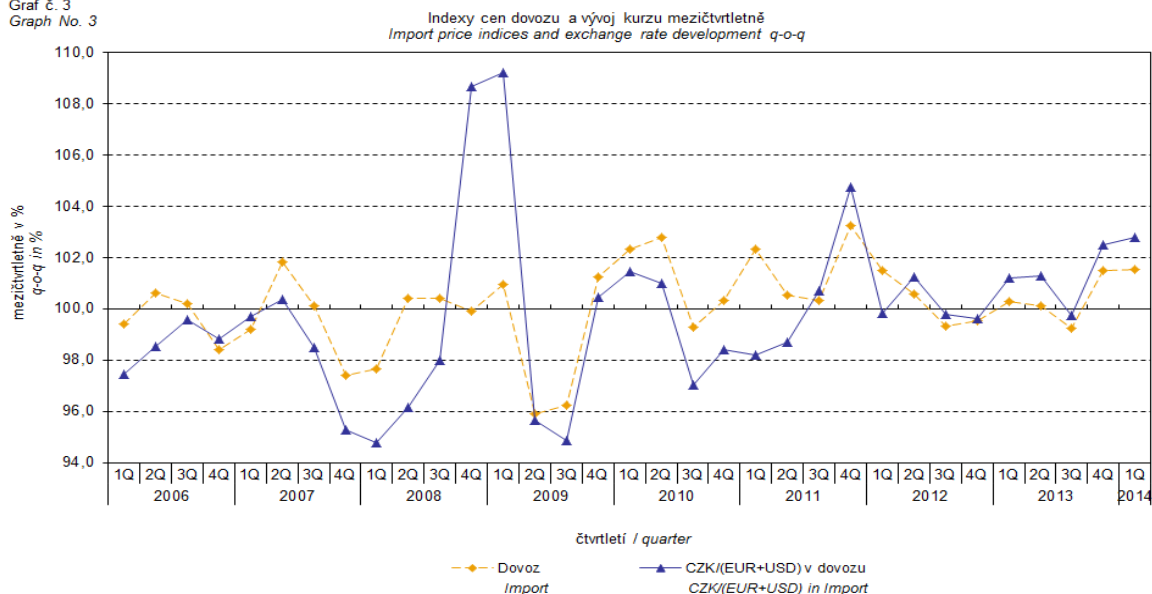
Are you interested in the latest data connected with inflation, GDP, population, wages and much more?

You can find them on pages of the Czech Statistical Office on the Internet: www.czso.cz

tel: +420 274 052 304, +420 274 052 425, e-mail: infoservis@czso.cz

ANALYSIS

Graf č. 3
Graph No. 3



It can be seen from Graphs Nos. 2 and 3 above that in both cases of imports and exports external trade prices have a strong relation to exchange rate impacts. Contracts with foreign entities are, as a rule, signed for a longer period of time and the longer the contract period is, the stronger the relation to exchange rates is.

Year-on-year (y-o-y) comparison:

Export prices in **Q1 2014** increased by 4.1% (in Q4 2013 they rose by 2.9%). Among more important groups of goods, the highest growth was reported for prices of 'beverages and tobacco' by 15.5%, then of 'miscellaneous manufactured articles' by 5.6%, 'manufactured goods classified chiefly by material' by 5.4%, and of 'machinery and transport equipment' by 4.4%. On the contrary, prices of 'mineral fuels, lubricants and related materials' dropped by 1.2%.

Import prices in **Q1 2014** increased by 2.4% (in Q4 2013 they rose by 1.0%). A higher growth of prices among the more important groups was indicated for 'food and live animals' by 7.8%, 'machinery and transport equipment' by 3.0%, prices of 'miscellaneous manufactured articles' and 'manufactured goods classified chiefly by material' grew identically by 2.8%. There were drops in prices observed in 'animal and vegetable oils, fats and waxes' by 12.6% and in 'mineral fuels, lubricants and related materials' by 2.3%.

Terms of trade in **Q1 2014** decreased to reach the value of 101.7% (in Q4 2013 they were 101.9%) and thus, nevertheless, stayed in positive values for the fifth quarter – see Graph No. 4 below. Significant positive values of terms of trade were recorded in 'miscellaneous manufactured articles' (102.7%), 'manufactured goods classified chiefly by material' (102.5%), and in 'machinery and transport equipment' (101.4%). Negative values of terms of trade were recorded solely for 'food and live animals' (93.7%).

Information Services Unit – Headquarters

Are you interested in the latest data connected with inflation, GDP, population, wages and much more?

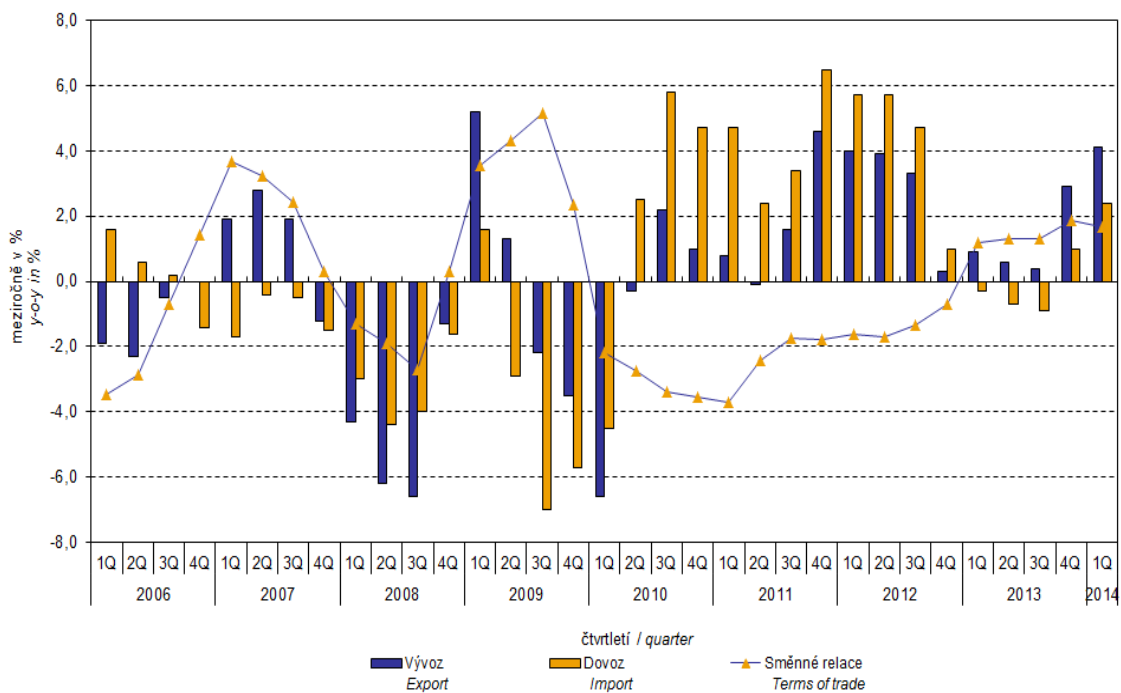
You can find them on pages of the Czech Statistical Office on the Internet: www.czso.cz

tel: +420 274 052 304, +420 274 052 425, e-mail: infoservis@czso.cz

ANALYSIS

Graf č. 4
Graph No. 4

Vývoj cen v zahraničním obchodě meziročně
Price trends in external trade y-o-y



Information Services Unit – Headquarters

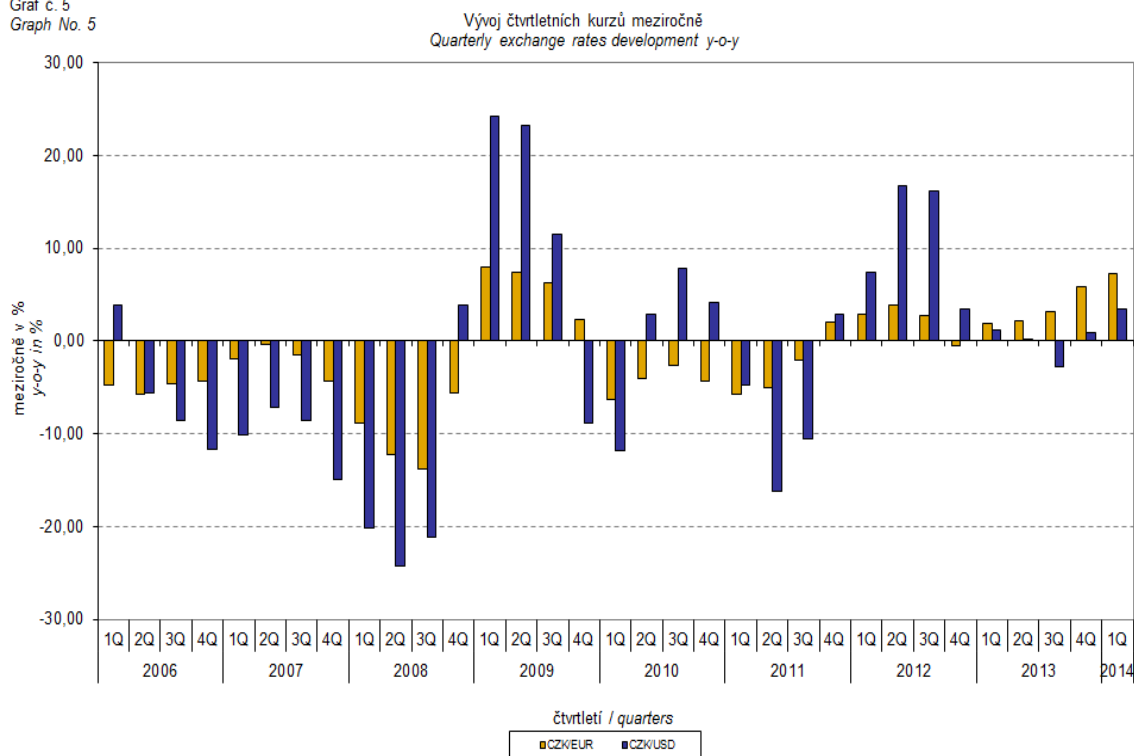
Are you interested in the latest data connected with inflation, GDP, population, wages and much more?

You can find them on pages of the Czech Statistical Office on the Internet: www.czso.cz

tel: +420 274 052 304, +420 274 052 425, e-mail: infoservis@czso.cz

ANALYSIS

Graf č. 5
Graph No. 5



External trade price indices adjusted y-o-y for exchange rate influence

The CZSO also carries out calculations of year-on-year external trade price indices adjusted for effects of exchange rate. The method is prices in foreign currencies reported in the current month are **converted** into Czech crowns by the **exchange rate** of the same month **of the last year**. Then they are used for the weighted mean calculation along with prices reported in CZK. The year-on-year adjusted price index is then calculated the way that this exchange rate adjusted base price index is related to the non-adjusted base price index of the same month of the last year. **Differences among adjusted and non-adjusted price indices may be substantial.** They can be clearly seen in Graphs Nos. 6 and 7 for November 2013 and December 2013, for instance.

The method employed does not enable, for many practical reasons, to carry out 100% exchange rate adjustment because all trade transactions concluded in foreign currencies are not reported in foreign currencies. This share is up to 30%. It follows from the aforementioned, that **at the full exchange rate adjustment differences** in between the price indices published and the exchange rate adjusted price indices would probably **be even larger**.

The aforementioned exchange rate adjusted indices can be used to form the exchange rate adjusted breakdown of price indices increments. Table 1, page 10, gives the **published and exchange rate adjusted breakdowns of increments** of export and import price indices, expanded to the most important two-digit code groups of the SITC 7. These breakdowns

Information Services Unit – Headquarters

Are you interested in the latest data connected with inflation, GDP, population, wages and much more?

You can find them on pages of the Czech Statistical Office on the Internet: www.czso.cz

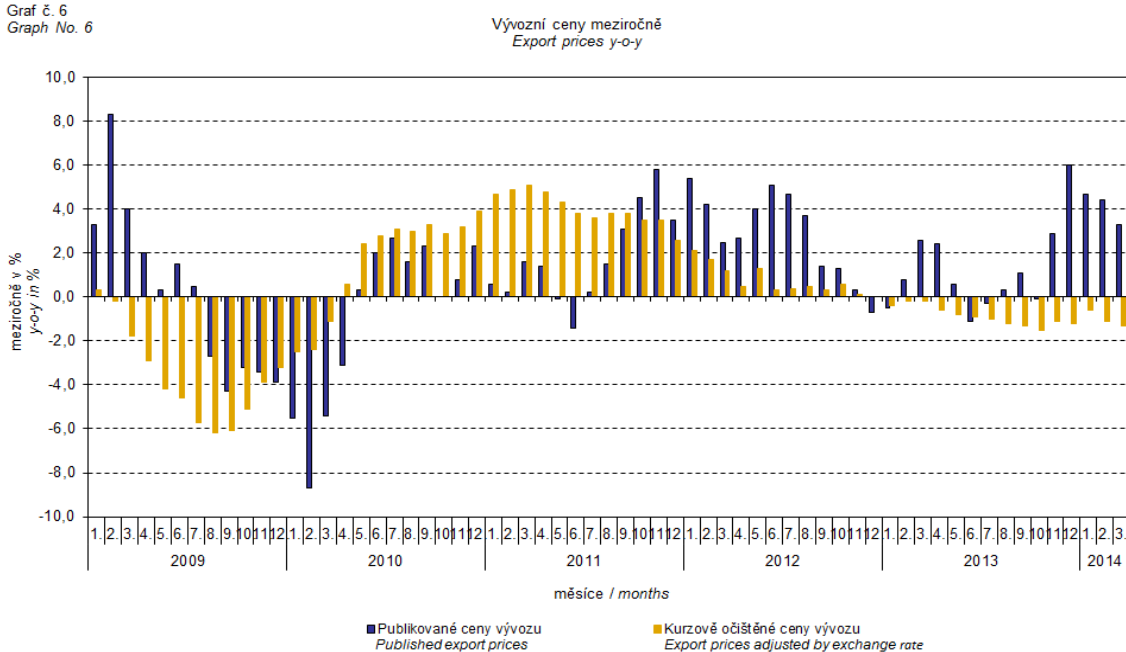
tel: +420 274 052 304, +420 274 052 425, e-mail: infoservis@czso.cz

ANALYSIS

illustrate, in a good manner, how many percentage points each of the groups “exchange rate contributed” to the index.

It holds in general that the effects of exchange rate decrease the value of price indices in external trade if CZK is strengthening to foreign currencies in total. Conversely, the effects of exchange rate push the price indices up if CZK is weakening to foreign currencies in total. It is obvious from following Graphs Nos. 6 and 7 how significant was the exchange rate impact on the value of export and import price indices.

Graf č. 6
Graph No. 6



Information Services Unit – Headquarters

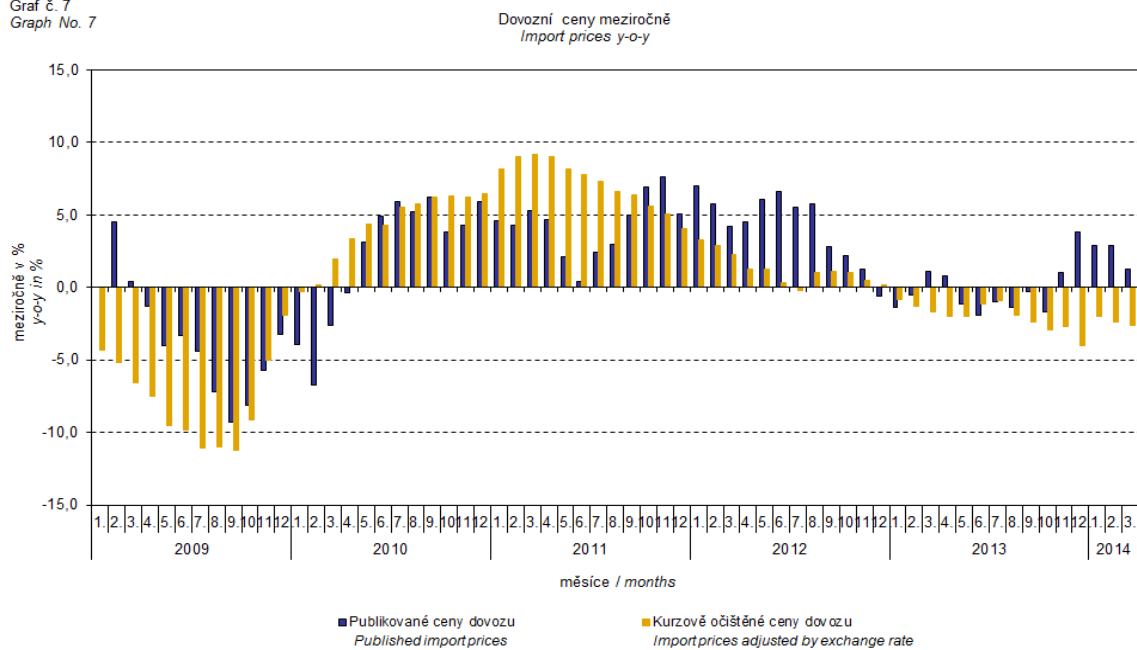
Are you interested in the latest data connected with inflation, GDP, population, wages and much more?

You can find them on pages of the Czech Statistical Office on the Internet: www.czso.cz

tel: +420 274 052 304, +420 274 052 425, e-mail: infoservis@czso.cz

ANALYSIS

Graf č. 7
Graph No. 7



Information Services Unit – Headquarters

Are you interested in the latest data connected with inflation, GDP, population, wages and much more?

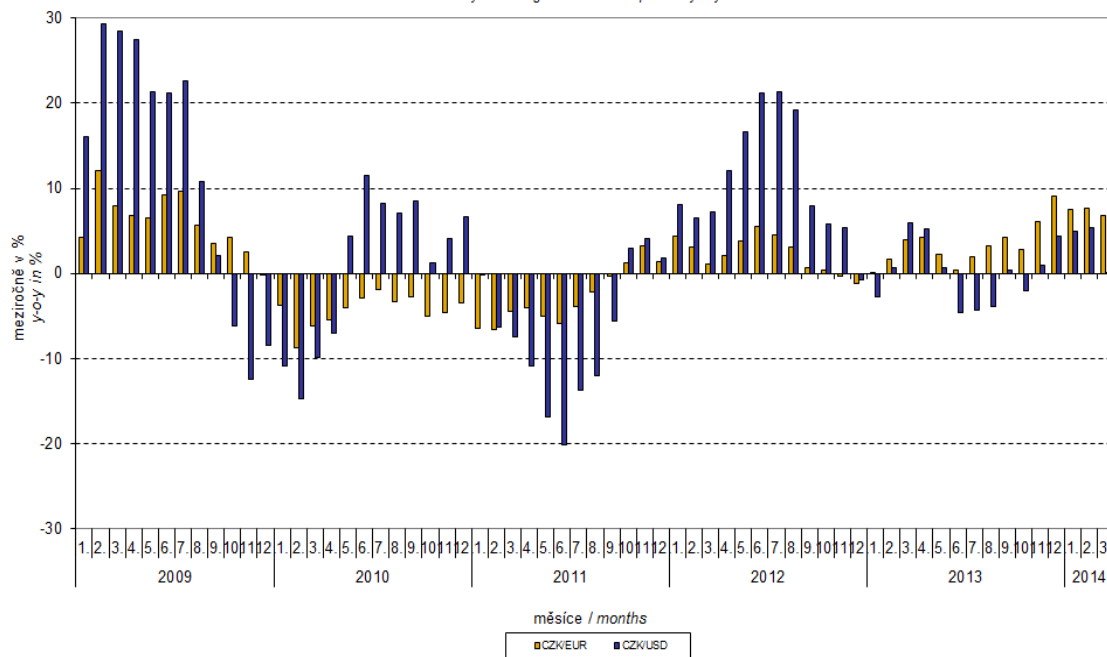
You can find them on pages of the Czech Statistical Office on the Internet: www.czso.cz

tel: +420 274 052 304, +420 274 052 425, e-mail: info servis@czso.cz

ANALYSIS

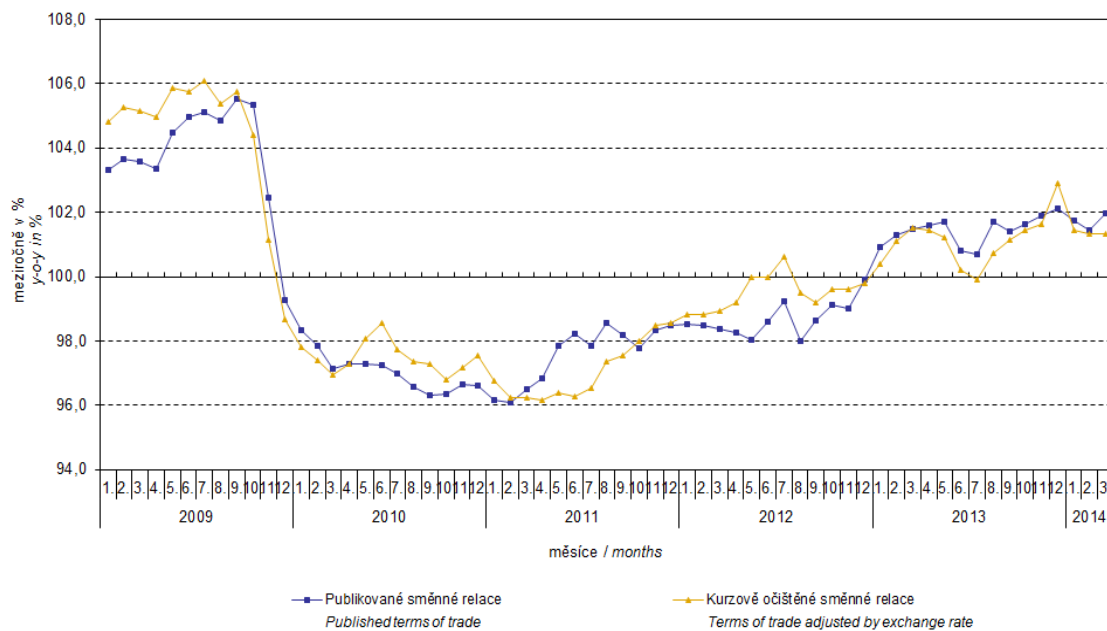
Graf č. 8
Graph No. 8

Vývoj měsíčních kurzů meziročně
Monthly exchange rates development y-o-y



Graf č. 9
Graph No. 9

Směnné relace meziročně
Terms of trade y-o-y



Information Services Unit – Headquarters

Are you interested in the latest data connected with inflation, GDP, population, wages and much more?

You can find them on pages of the Czech Statistical Office on the Internet: www.czso.cz

tel: +420 274 052 304, +420 274 052 425, e-mail: infoservis@czso.cz

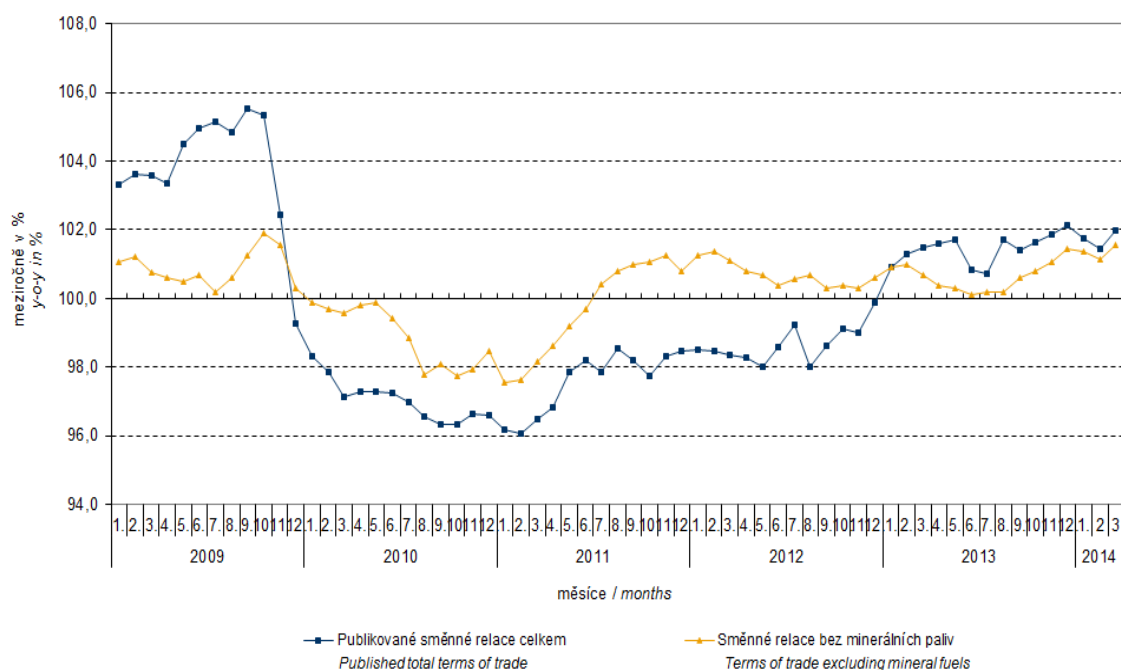
ANALYSIS

It can be seen from Graph No. 9 how the exchange rate influences the value of the year-on-year terms of trade.

Graph No. 10 demonstrates how the value of terms of trade would develop if the observed groups would not include that of 'mineral fuels, lubricants and related materials'.

Graf č. 10
Graph No. 10

Publikované směnné relace a směnné relace s vyloučením minerálních paliv meziročně
Published terms of trade and terms of trade excluding mineral fuels y-o-y



It can be observed in Graph No. 10 that 'mineral fuels, lubricants and related materials' were decreasing the overall value of y-o-y terms of trade since Q4 2009. In Q1 2013 the situation began to reverse and 'mineral fuels, lubricants and related materials' have had again an upward effect on the value of terms of trade. It is, of course, related to the world market price development, especially in crude oil. Import prices, which, compared to export prices, include a higher proportion of crude materials, respond in a more sensitive way to price turbulences and therefore when prices of crude materials go up, terms of trade, as a rule, go down and, conversely, when prices of crude materials fall, terms of trade grow.

Information Services Unit – Headquarters

Are you interested in the latest data connected with inflation, GDP, population, wages and much more?

You can find them on pages of the Czech Statistical Office on the Internet: www.czso.cz

tel: +420 274 052 304, +420 274 052 425, e-mail: infoservis@czso.cz

ANALYSIS

Tabulka 1: Rozklad přírůstků publikovaných a kurzově očištěných indexů cen vývozu a dovozu za březen 2014
Table 1: Breakdown of export and import price indices - published and exchange rate adjusted for March 2014

SITC	Název Name	Publikované Published				Očištěné Adjusted			
		Meziměsíční M-o-m	Meziroční Year-on-year			Meziměsíční M-o-m	Meziroční Year-on-year		
		03/2014	01/2014	02/2014	03/2014	03/2014	01/2014	02/2014	03/2014
Rozklad přírůstků indexů vývozních cen <i>Breakdown of export price indices</i>									
	Celkem <i>Total</i>	-0,6	4,7	4,4	3,3	-0,4	-0,6	-1,1	-1,3
0	Potraviny a živá zvířata <i>Food and live animals</i>	0,0	0,0	0,0	0,0	0,0	-0,1	-0,1	0,0
1	Nápoje a tabák <i>Beverages and tobacco</i>	0,0	0,1	0,1	0,1	0,0	0,0	0,1	0,1
2	Suroviny nepoživatelné, s výjimkou paliv <i>Crude materials, inedible, except fuels</i>	-0,1	0,1	0,1	0,0	-0,1	0,0	0,0	-0,1
3	Minerální paliva, maziva a příbuzné materiály <i>Mineral fuels, lubricants and related materials</i>	0,0	0,0	-0,1	0,0	0,0	-0,2	-0,3	-0,2
4	Živočišné a rostlinné oleje <i>Animal and vegetable oils, fats and waxes</i>	0,0	0,0	0,0	0,0	0,0	0,0	0,0	0,0
5	Chemikálie a příbuzné výrobky <i>Chemicals and related products</i>	-0,1	0,2	0,2	0,0	0,0	-0,2	-0,2	-0,3
6	Tržní výrobky tříděné hlavně podle materiálu <i>Manufactured goods classified chiefly by material</i>	0,0	1,0	1,0	0,9	0,0	0,2	0,1	0,2
7	Stroje a dopravní prostředky - z toho: <i>Machinery and transport equipment - thereof:</i>	-0,3	2,6	2,5	1,8	-0,2	-0,3	-0,7	-1,0
74	Stroje a zařízení všeobecně užívané v průmyslu, j.n. <i>General industrial machinery and equipment, n.e.s.</i>	0,0	-0,2	-0,2	-0,2	0,0	0,1	-0,1	-0,1
77	Elektrická zařízení, přístroje a spotřebiče, j.n. <i>Electrical machinery, apparatus and appliances, n.e.s.</i>	-0,1	-0,1	-0,1	-0,1	-0,1	-0,1	-0,1	-0,2
78	Silniční vozidla <i>Road vehicles (including air-cushion vehicles)</i>	0,0	0,1	0,1	0,1	0,0	0,2	0,0	0,0
8	Průmyslové spotřební zboží <i>Miscellaneous manufactured articles</i>	-0,1	0,7	0,6	0,5	-0,1	0,0	0,0	0,0
Rozklad přírůstků indexů dovozních cen <i>Breakdown of import price indices</i>									
	Celkem <i>Total</i>	-0,8	2,9	2,9	1,3	-0,5	-2,0	-2,4	-2,6
0	Potraviny a živá zvířata <i>Food and live animals</i>	0,0	0,5	0,4	0,4	0,0	0,3	0,2	0,2
1	Nápoje a tabák <i>Beverages and tobacco</i>	0,0	0,0	0,1	0,0	0,0	0,0	0,0	0,0
2	Suroviny nepoživatelné, s výjimkou paliv <i>Crude materials, inedible, except fuels</i>	-0,1	0,1	0,1	0,0	-0,1	0,0	0,0	-0,1
3	Minerální paliva, maziva a příbuzné materiály <i>Mineral fuels, lubricants and related materials</i>	-0,2	-0,1	-0,3	-0,5	-0,1	-0,7	-0,9	-0,7
4	Živočišné a rostlinné oleje <i>Animal and vegetable oils, fats and waxes</i>	0,0	0,0	0,0	0,0	0,0	0,0	0,0	0,0
5	Chemikálie a příbuzné výrobky <i>Chemicals and related products</i>	-0,1	0,1	0,2	0,1	-0,1	-0,4	-0,3	-0,4
6	Tržní výrobky tříděné hlavně podle materiálu <i>Manufactured goods classified chiefly by material</i>	-0,1	0,6	0,6	0,3	-0,1	-0,3	-0,4	-0,4
7	Stroje a dopravní prostředky - z toho: <i>Machinery and transport equipment - thereof:</i>	-0,2	1,4	1,5	0,8	-0,1	-0,8	-0,8	-1,0
74	Stroje a zařízení všeobecně užívané v průmyslu, j.n. <i>General industrial machinery and equipment, n.e.s.</i>	0,0	0,3	0,3	0,3	0,0	0,0	0,0	0,0
75	Kancelářské stroje a zař. k automat. zpracování dat <i>Office machines and automatic data-processing machines</i>	0,0	0,1	0,1	0,0	0,0	-0,1	-0,2	-0,2
77	Elektrická zařízení, přístroje a spotřebiče, j.n. <i>Electrical machinery, apparatus and appliances, n.e.s.</i>	0,0	0,5	0,5	0,4	0,0	-0,1	-0,1	-0,1
78	Silniční vozidla <i>Road vehicles (including air-cushion vehicles)</i>	-0,1	0,2	0,2	0,1	-0,1	-0,2	-0,2	-0,3
8	Průmyslové spotřební zboží <i>Miscellaneous manufactured articles</i>	-0,1	0,3	0,3	0,2	0,0	-0,1	-0,2	-0,2

Information Services Unit – Headquarters

Are you interested in the latest data connected with inflation, GDP, population, wages and much more?

You can find them on pages of the Czech Statistical Office on the Internet: www.czso.cz

tel: +420 274 052 304, +420 274 052 425, e-mail: infoservis@czso.cz

ANALYSIS

Closing Table gives published external trade price indices **without adjustment**.

Tabulka 2: Indexy cen vývozu a dovozu v 1. čtvrtletí 2014

Table 2: Export and import price indices in Q1 2014

SITC	Název Name	Stejně období předchozího roku = 100 Corresponding period of previous year = 100				
		4Q/2013	01/2014	02/2014	03/2014	1Q/2014
Indexy vývozních cen Export price indices						
	Celkem Total	102,9	104,7	104,4	103,3	104,1
0	Potraviny a živá zvířata Food and live animals	100,0	101,0	101,0	100,9	101,0
1	Nápoje a tabák Beverages and tobacco	120,8	115,8	116,0	114,8	115,5
2	Suroviny nepoživatelné, s výjimkou paliv Crude materials, inedible, except fuels	99,5	102,4	103,1	101,0	102,1
3	Minerální paliva, maziva a příbuzné materiály Mineral fuels, lubricants and related materials	99,2	100,8	97,0	98,5	98,8
4	Živočišné a rostlinné oleje Animal and vegetable oils, fats and waxes	94,3	95,6	96,1	95,4	95,7
5	Chemikálie a příbuzné výrobky Chemicals and related products	99,9	101,8	102,6	100,6	101,7
6	Tržní výrobky tříděné hlavně podle materiálu Manufactured goods classified chiefly by material	102,6	105,6	105,6	105,0	105,4
7	Stroje a dopravní prostředky Machinery and transport equipment	103,7	105,0	104,8	103,3	104,4
8	Průmyslové spotřební zboží Miscellaneous manufactured articles	104,2	106,1	105,9	104,7	105,6
Indexy dovozních cen Import price indices						
	Celkem Total	101,0	102,9	102,9	101,3	102,4
0	Potraviny a živá zvířata Food and live animals	105,3	109,0	108,2	106,4	107,8
1	Nápoje a tabák Beverages and tobacco	107,6	108,1	106,1	103,9	106,0
2	Suroviny nepoživatelné, s výjimkou paliv Crude materials, inedible, except fuels	98,3	103,8	103,9	98,7	102,1
3	Minerální paliva, maziva a příbuzné materiály Mineral fuels, lubricants and related materials	95,3	99,3	98,0	95,9	97,7
4	Živočišné a rostlinné oleje Animal and vegetable oils, fats and waxes	86,2	86,8	87,1	88,2	87,4
5	Chemikálie a příbuzné výrobky Chemicals and related products	99,3	101,2	101,8	100,5	101,2
6	Tržní výrobky tříděné hlavně podle materiálu Manufactured goods classified chiefly by material	101,7	103,5	103,1	101,9	102,8
7	Stroje a dopravní prostředky Machinery and transport equipment	102,4	103,4	103,8	101,9	103,0
8	Průmyslové spotřební zboží Miscellaneous manufactured articles	103,2	103,8	103,3	101,5	102,8

Developed by: Vladimír Klimeš, Prices Statistics Department

Director of the Department: Jiří Mrázek, telephone: (+420) 274 052 533

Information Services Unit – Headquarters

Are you interested in the latest data connected with inflation, GDP, population, wages and much more?

You can find them on pages of the Czech Statistical Office on the Internet: www.czso.cz

tel: +420 274 052 304, +420 274 052 425, e-mail: infoservis@czso.cz