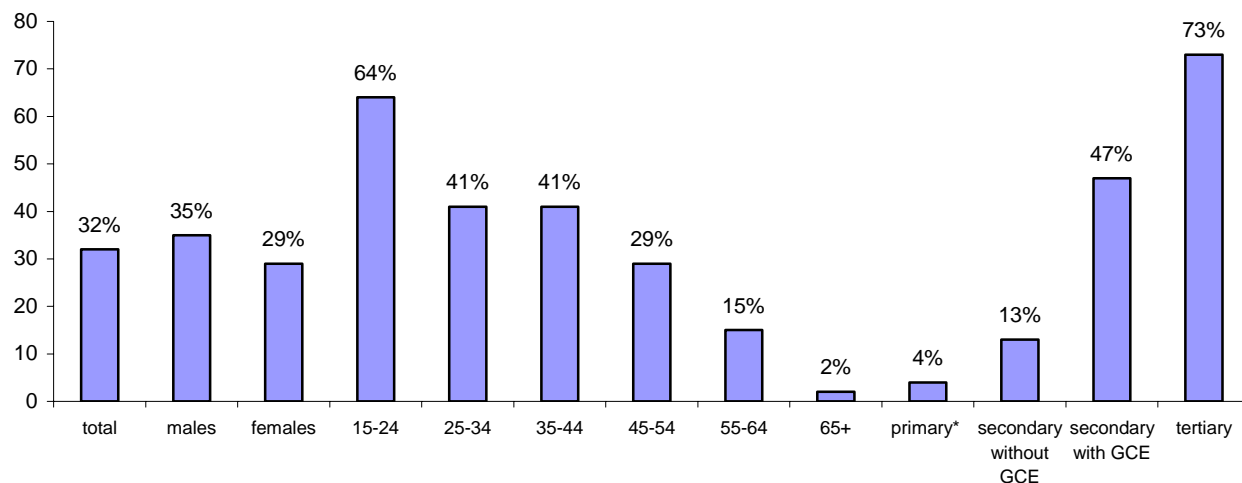


3. USE OF THE INTERNET IN RELATION TO PUBLIC ADMINISTRATION

3.1. Use of the internet in relation to public administration - individuals

There were 32% of population aged 15+ who used the internet in the 1st quarter 2005.

Chart 13 : Percentage of the internet users in population aged 15+ by gender, age and education (2005)



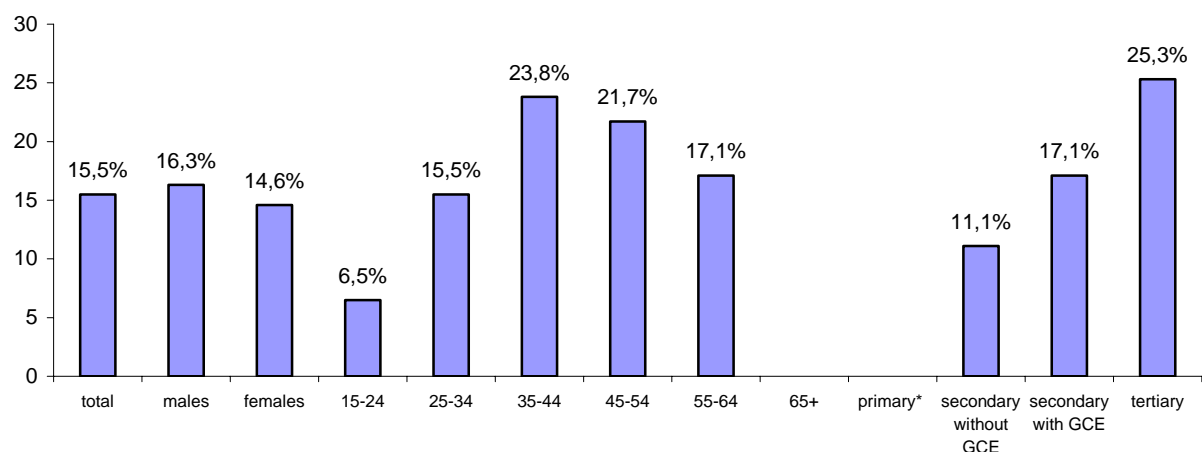
* without students

Source : Survey on ICT usage in Households 2005, CZSO

Only a small part of the internet users (15,5%) used the internet in relation to public administration.

Relation to public administration means: looking for information published on public administration web sites, downloading forms from these web sites, filling and returning electronic forms and sending messages via the internet (e-mails, messages from web pages) to public administration.

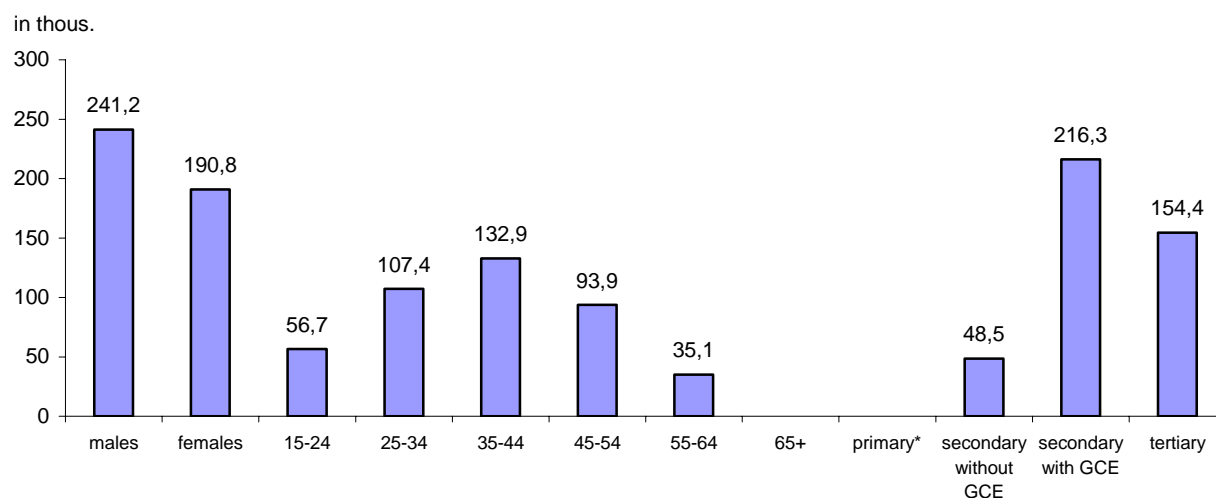
Chart 14 : Percentage of the internet users who used the internet in relation to public administration in the last 12 months, by gender age and education (data collection in the 1st quarter 2005)



* without students

Source : Survey on ICT usage in Households 2005, CZSO

Chart 15: Total number of individuals who used the internet in relation to public administration in the last 12 months, by gender, age and education (data collection in the 1st quarter 2005)

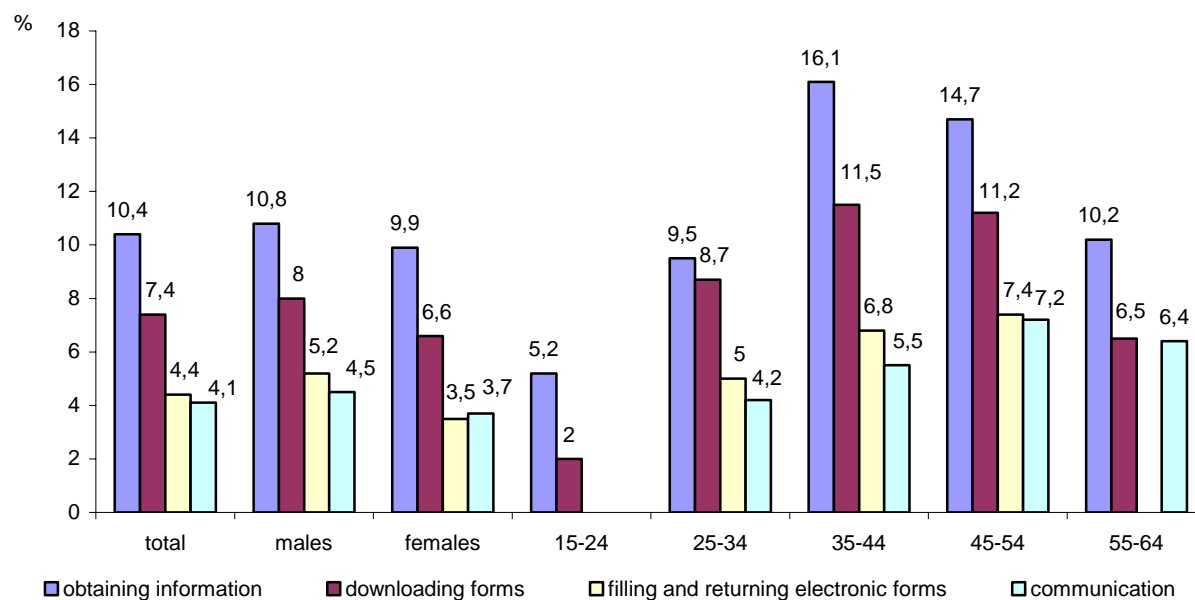


* without students

Source : Survey on ICT usage in Households 2005, CZSO

10,4% of the internet users visited public administration web sites to obtain information, 7,4% to download a form, 4,4% to fill in and send an electronic form and 4,1% to send a message to a public administration body.

Chart 16: Percentage of internet users who used the internet in relation to public administration in the last 12 months, by purpose of the use (data collection in the 1st quarter 2005)

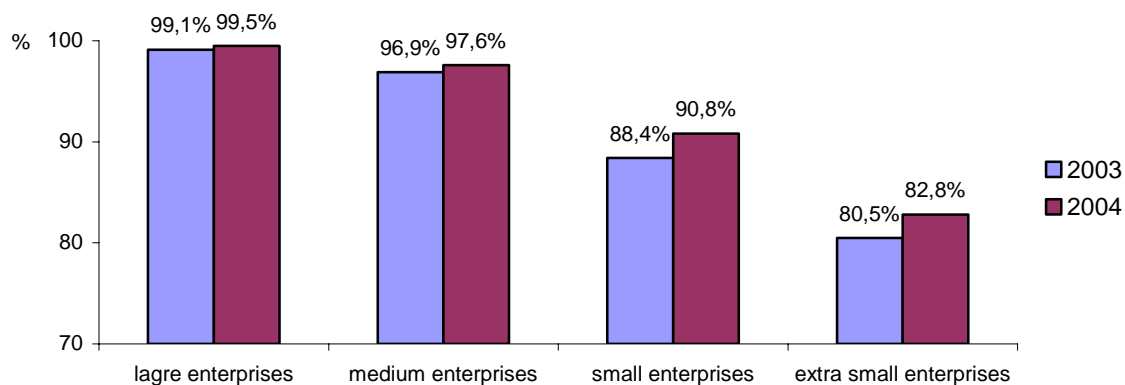


Source : Survey on ICT usage in Households 2005, CZSO

3.2. Use of the internet in relation to public administration - enterprises

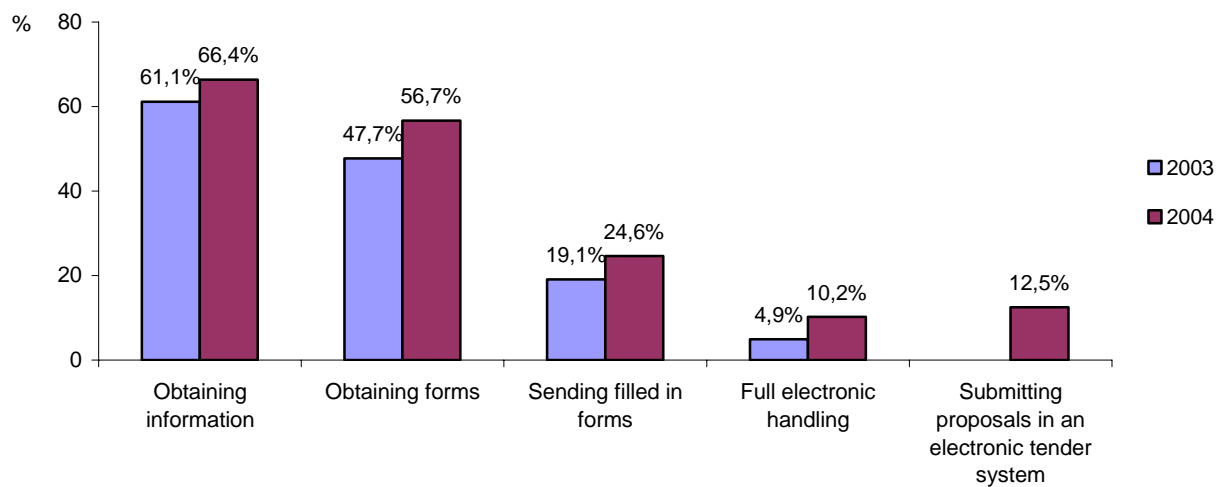
There were 99,5 % of large enterprises (250 and more employees), 97,6% of medium enterprises (50-249 employees), 90,8% of small enterprises (10 až 49 employees) and 82,8% of extra small enterprises (5-9 employees) with the internet access (31.12.2004).

Chart 17: Percentage of enterprises with internet access by type of enterprise, 31.12.



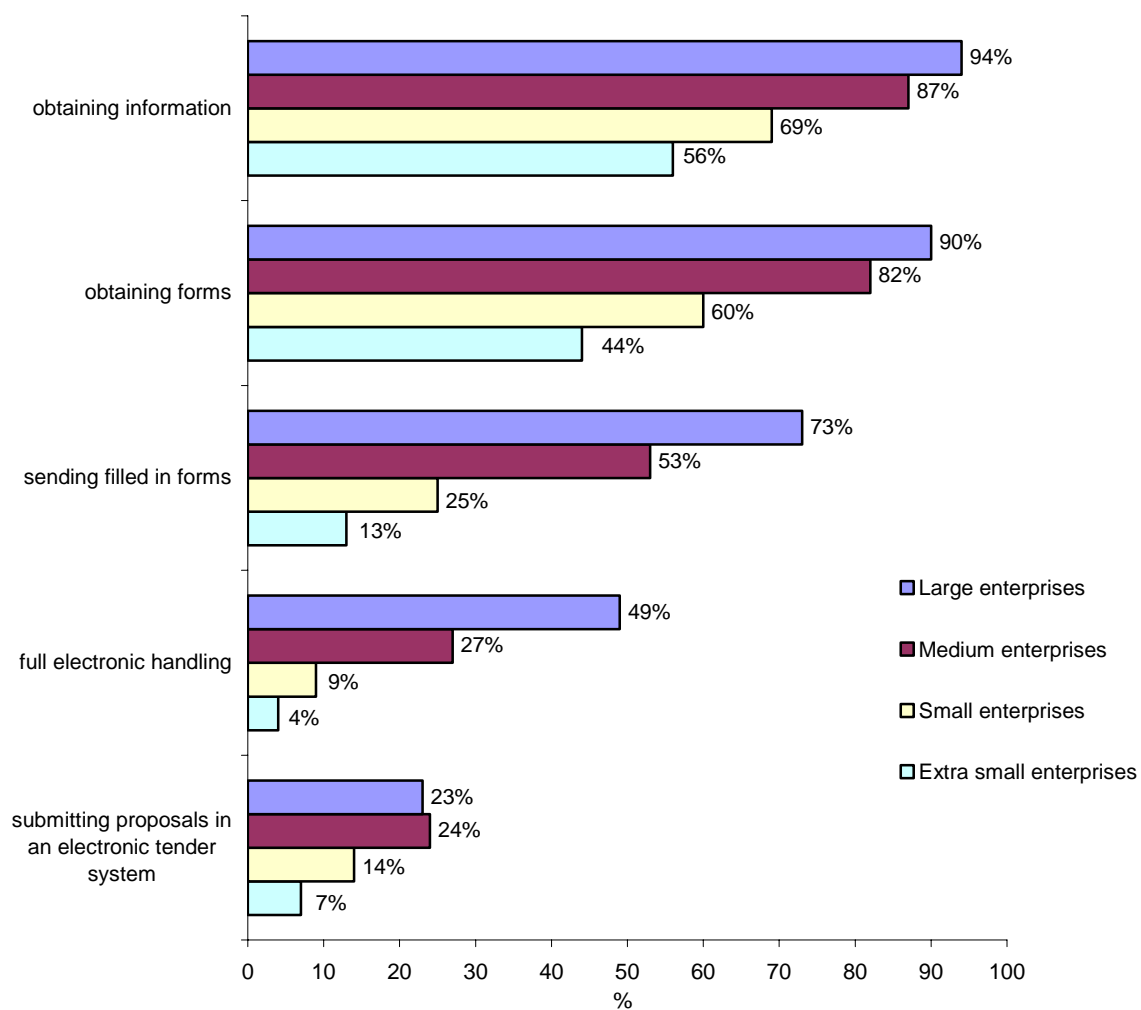
Source: Enterprise survey on ICT usage and E-Commerce in 2004 (2003), CZSO

Graf 18: Percentage of enterprises using the internet in relation to public administration, by purpose of the use (from total number of enterprises with 5 and more persons employed)



Source: Enterprise survey on ICT usage and E-Commerce in 2004 (2003), CZSO

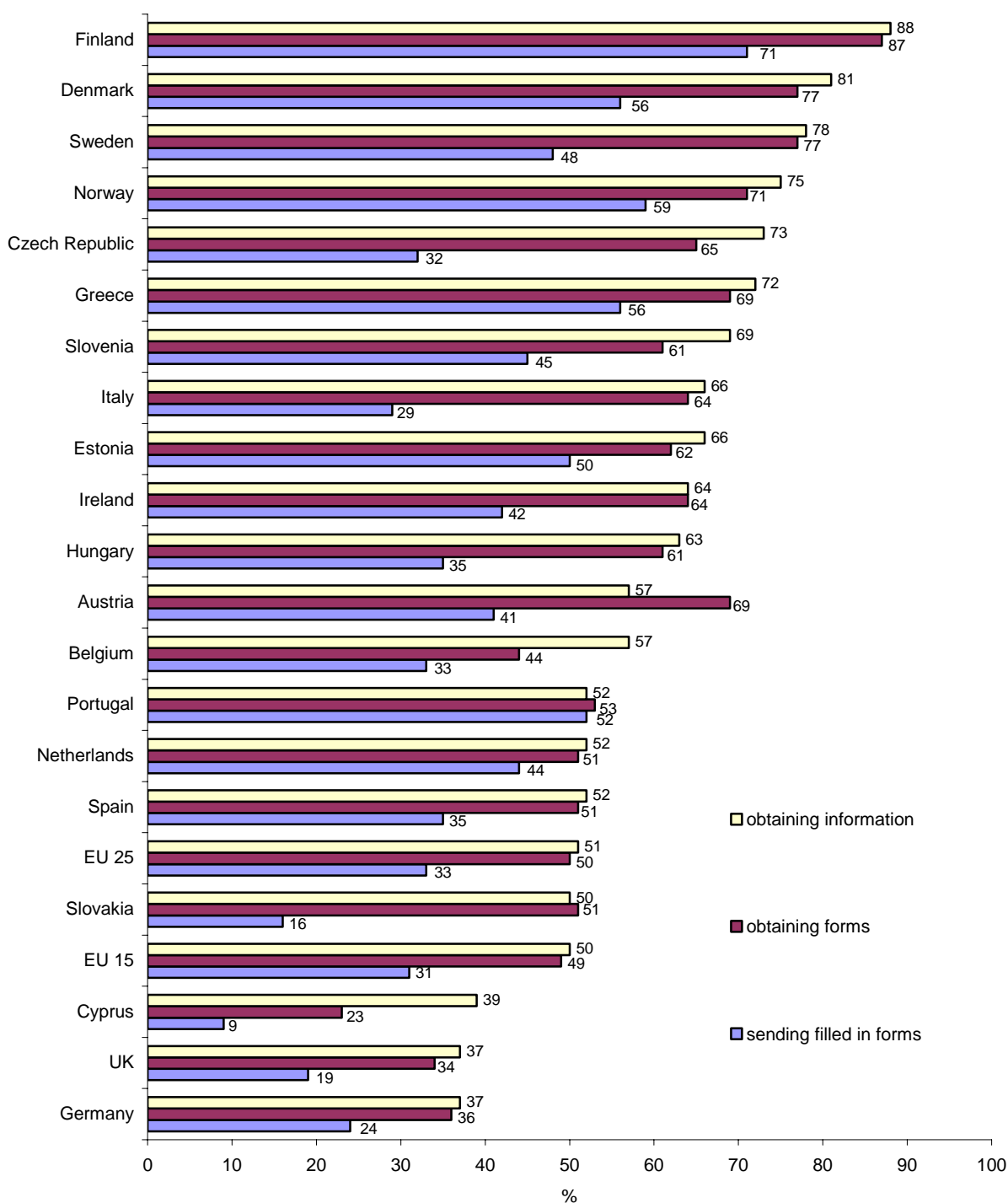
Chart 19: Percentage of enterprises using the internet in relation to public administration by type of enterprise and purpose of the use (in 2004)



Source: Enterprise survey on ICT usage and E-Commerce in 2004, CZSO

4.3. International comparison

Chart 20: Percentage of enterprises using the internet for interacting with public authorities broken down by purpose (year 2004)



Source: Community Survey on ICT usage and e-commerce in enterprises for 2004, Eurostat