

T5 Sklizňová plocha, hektarový výnos, sklizeň
Harvested area, per hectare yield and harvest of crops

5.1 Obiloviny
Cereals for grain

[01](#) Tab. 5.1.1 Obiloviny celkem, pšenice, žito
Tab. 5.1.1 Cereals for grain, Wheat, Rye

[02](#) Graf 5.1.1.1 Sklizňová plocha, hektarový výnos - obiloviny celkem
Graph 5.1.1.1 Harvested area, per hectare yield - Cereals for grain

[03](#) Graf 5.1.1.2 Sklizňová plocha, hektarový výnos - pšenice
Graph 5.1.1.2 Harvested area, per hectare yield - Wheat

[04](#) Graf 5.1.1.3 Sklizňová plocha, hektarový výnos - žito
Graph 5.1.1.3 Harvested area, per hectare yield - Rye

[05](#) Tab. 5.1.2 Ječmen, oves, kukuřice na zrno
Tab. 5.1.2 Barley, Oats, Grain maize

[06](#) Graf 5.1.2.1 Sklizňová plocha, hektarový výnos - ječmen
Graph 5.1.2.1 Harvested area, per hectare yield - Barley

[07](#) Graf 5.1.2.2 Sklizňová plocha, hektarový výnos - oves
Graph 5.1.2.2 Harvested area, per hectare yield - Oats

[08](#) Graf 5.1.2.3 Sklizňová plocha, hektarový výnos - kukuřice na zrno
Graph 5.1.2.3 Harvested area, per hectare yield - Grain maize

Tab. 5.1.1 Sklizňová plocha, hektarový výnos, sklizeň - obiloviny celkem, pšenice, žito¹⁾
Harvested area, per hectare yield and harvest of crops - Cereals for grain, Wheat, Rye¹⁾

| Rok Year | Obiloviny na zrno celkem <i>Cereals for grain</i> | | | Pšenice <i>Wheat</i> | | | Žito ¹⁾ <i>Rye¹⁾</i> | | |
|-------------|--|--|---------------------------|--|--|---------------------------|--|--|---------------------------|
| | sklizňová plocha <i>Harvested area</i> | hektarový výnos <i>Per hectare yield</i> | sklizeň <i>Harvest</i> | sklizňová plocha <i>Harvested area</i> | hektarový výnos <i>Per hectare yield</i> | sklizeň <i>Harvest</i> | sklizňová plocha <i>Harvested area</i> | hektarový výnos <i>Per hectare yield</i> | sklizeň <i>Harvest</i> |
| | ha | t/ha | t | ha | t/ha | t | ha | t/ha | t |
| 1918 | - | - | - | 363 000 | 0,86 | 312 000 | 778 000 | 0,84 | 653 000 |
| 1919 | - | - | - | 350 000 | 1,24 | 434 000 | 750 000 | 1,13 | 847 000 |
| 1920 | 2 017 139 | 1,12 | 2 258 904 | 351 370 | 1,24 | 434 904 | 701 561 | 0,95 | 668 705 |
| 1921 | 1 968 026 | 1,64 | 3 219 602 | 350 643 | 1,87 | 655 327 | 687 903 | 1,61 | 1 110 016 |
| 1922 | 1 993 261 | 1,47 | 2 935 933 | 342 601 | 1,58 | 540 373 | 687 498 | 1,52 | 1 042 414 |
| 1923 | 1 997 234 | 1,73 | 3 446 305 | 338 632 | 1,72 | 583 367 | 668 901 | 1,62 | 1 084 715 |
| 1924 | 1 972 377 | 1,60 | 3 154 234 | 334 461 | 1,69 | 566 552 | 647 723 | 1,44 | 932 295 |
| 1925 | 1 994 667 | 1,84 | 3 666 869 | 340 859 | 1,90 | 647 991 | 653 620 | 1,83 | 1 196 874 |
| 1926 | 2 008 222 | 1,69 | 3 387 144 | 348 609 | 1,65 | 576 378 | 647 445 | 1,47 | 949 749 |
| 1927 | 2 012 264 | 1,88 | 3 787 387 | 357 604 | 1,97 | 705 251 | 633 650 | 1,65 | 1 044 090 |
| 1928 | 2 184 909 | 1,99 | 4 342 175 | 408 720 | 2,11 | 862 641 | 772 632 | 1,89 | 1 461 763 |
| 1929 | 2 302 319 | 1,91 | 4 406 985 | 431 115 | 1,98 | 855 172 | 830 679 | 1,78 | 1 481 242 |
| 1930 | 2 249 034 | 1,90 | 4 265 300 | 411 475 | 2,07 | 853 017 | 834 234 | 1,81 | 1 514 057 |
| 1931 | 2 261 034 | 1,71 | 3 876 029 | 448 901 | 1,83 | 821 027 | 775 962 | 1,54 | 1 198 616 |
| 1932 | 2 279 386 | 2,20 | 5 006 729 | 464 268 | 2,06 | 954 453 | 804 504 | 2,20 | 1 773 672 |
| 1933 | 2 277 881 | 2,20 | 5 003 037 | 520 052 | 2,38 | 1 235 790 | 797 608 | 2,09 | 1 664 104 |
| 1934 | 2 261 164 | 1,57 | 3 550 647 | 532 032 | 1,43 | 761 986 | 759 039 | 1,60 | 1 215 417 |
| 1935 | 2 252 968 | 1,69 | 3 807 030 | 544 805 | 1,89 | 1 030 420 | 771 255 | 1,70 | 1 313 451 |
| 1936 | 2 218 701 | 1,74 | 3 855 098 | 518 453 | 1,89 | 977 785 | 773 356 | 1,52 | 1 172 431 |
| 1937 | 2 189 697 | 1,92 | 4 214 216 | 464 699 | 2,04 | 947 318 | 749 077 | 1,72 | 1 286 063 |
| 1938 | 2 217 230 | 2,11 | 4 671 831 | 483 780 | 2,25 | 1 090 735 | 773 225 | 2,00 | 1 545 265 |
| · | | | | | | | | | |
| 1945 | 1 849 228 | - | - | 493 040 | 1,40 | 687 945 | 650 443 | 1,21 | 788 078 |
| 1946 | 1 866 627 | - | - | 499 995 | 1,67 | 833 282 | 624 235 | 1,52 | 946 010 |
| 1947 | 1 787 429 | - | - | 459 617 | 1,34 | 616 457 | 551 561 | 1,55 | 852 763 |
| 1948 | 1 887 124 | 1,70 | 3 217 279 | 502 835 | 1,84 | 925 887 | 548 087 | 1,64 | 901 178 |
| 1949 | 1 771 906 | 1,96 | 3 480 587 | 458 536 | 2,10 | 961 188 | 524 182 | 1,95 | 1 023 055 |
| 1950 | 1 720 195 | 1,85 | 3 184 685 | 434 913 | 2,00 | 870 564 | 460 467 | 1,95 | 899 196 |
| 1951 | 1 599 090 | 1,93 | 3 081 865 | 411 670 | 2,10 | 863 001 | 403 795 | 1,92 | 775 319 |
| 1952 | 1 641 851 | 1,94 | 3 186 587 | 445 773 | 2,23 | 995 580 | 437 038 | 1,67 | 730 500 |
| 1953 | 1 639 903 | 1,87 | 3 073 547 | 439 023 | 2,08 | 912 955 | 411 056 | 1,80 | 737 930 |
| 1954 | 1 579 655 | 1,72 | 2 719 127 | 413 721 | 1,59 | 656 655 | 403 752 | 1,59 | 640 172 |
| 1955 | 1 612 262 | 2,08 | 3 360 339 | 426 184 | 2,19 | 933 303 | 404 978 | 1,97 | 798 304 |
| 1956 | 1 644 456 | 2,20 | 3 613 232 | 434 907 | 2,31 | 1 005 496 | 400 588 | 2,13 | 853 960 |
| 1957 | 1 640 236 | 1,97 | 3 231 969 | 440 926 | 2,14 | 942 058 | 401 936 | 1,88 | 756 323 |
| 1958 | 1 615 048 | 1,96 | 3 165 678 | 449 540 | 1,99 | 895 756 | 395 062 | 2,00 | 790 807 |
| 1959 | 1 609 129 | 2,22 | 3 571 200 | 443 384 | 2,40 | 1 065 827 | 384 710 | 2,12 | 816 115 |
| 1960 | 1 558 123 | 2,43 | 3 778 071 | 407 494 | 2,60 | 1 061 031 | 355 311 | 2,18 | 773 142 |
| 1961 | 1 539 394 | 2,48 | 3 814 858 | 410 391 | 2,86 | 1 175 388 | 382 395 | 2,23 | 853 609 |
| 1962 | 1 549 358 | 2,40 | 3 717 798 | 424 328 | 2,57 | 1 092 503 | 357 211 | 2,14 | 764 728 |
| 1963 | 1 558 757 | 2,47 | 3 857 207 | 492 598 | 2,83 | 1 395 618 | 355 939 | 2,16 | 768 175 |
| 1964 | 1 578 297 | 2,29 | 3 620 265 | 548 509 | 2,42 | 1 325 385 | 337 649 | 2,25 | 760 388 |
| 1965 | 1 557 045 | 2,21 | 3 441 817 | 560 105 | 2,48 | 1 391 158 | 340 591 | 2,03 | 691 891 |
| 1966 | 1 612 699 | 2,36 | 3 798 820 | 600 320 | 2,57 | 1 543 827 | 324 402 | 2,05 | 666 418 |
| 1967 | 1 639 442 | 2,63 | 4 318 631 | 622 492 | 2,74 | 1 706 641 | 267 004 | 2,28 | 608 355 |
| 1968 | 1 677 877 | 2,88 | 4 840 169 | 652 954 | 3,18 | 2 076 881 | 284 842 | 2,33 | 664 975 |
| 1969 | 1 716 525 | 2,99 | 5 124 968 | 674 970 | 3,07 | 2 071 404 | 234 525 | 2,54 | 595 298 |
| 1970 | 1 703 383 | 2,77 | 4 710 477 | 702 822 | 3,00 | 2 106 790 | 185 856 | 2,13 | 396 216 |
| 1971 | 1 741 651 | 3,29 | 5 735 617 | 725 241 | 3,53 | 2 561 944 | 205 358 | 2,70 | 555 293 |
| 1972 | 1 808 118 | 3,22 | 5 822 723 | 797 456 | 3,45 | 2 751 229 | 205 952 | 2,82 | 579 902 |
| 1973 | 1 829 238 | 3,47 | 6 355 592 | 816 769 | 3,70 | 3 021 695 | 199 995 | 3,14 | 627 217 |
| 1974 | 1 830 315 | 3,65 | 6 678 734 | 850 699 | 3,71 | 3 154 076 | 188 941 | 3,09 | 584 326 |
| 1975 | 1 817 375 | 3,26 | 5 933 591 | 805 322 | 3,40 | 2 741 348 | 163 472 | 2,83 | 463 327 |
| 1976 | 1 773 787 | 3,23 | 5 732 483 | 852 665 | 3,45 | 2 938 763 | 153 903 | 2,98 | 458 811 |
| 1977 | 1 790 871 | 3,76 | 6 736 713 | 854 238 | 3,98 | 3 402 097 | 172 848 | 3,11 | 536 695 |
| 1978 | 1 778 560 | 4,10 | 7 289 241 | 832 834 | 4,36 | 3 632 922 | 147 110 | 3,47 | 509 825 |
| 1979 | 1 729 953 | 3,48 | 6 017 306 | 752 152 | 3,41 | 2 567 013 | 127 675 | 3,03 | 386 506 |
| 1980 | 1 725 903 | 4,04 | 6 972 196 | 784 775 | 4,42 | 3 466 472 | 137 725 | 3,23 | 444 806 |

Tab. 5.1.1 Sklizňová plocha, hektarový výnos, sklizeň - obiloviny celkem, pšenice, žito¹⁾
Harvested area, per hectare yield and harvest of crops - Cereals for grain, Wheat, Rye¹⁾

| Rok Year | Obiloviny na zrno celkem <i>Cereals for grain</i> | | | Pšenice <i>Wheat</i> | | | Žito ¹⁾ <i>Rye¹⁾</i> | | |
|-------------|--|--|---------------------------|--|--|---------------------------|--|--|---------------------------|
| | sklizňová plocha <i>Harvested area</i> | hektarový výnos <i>Per hectare yield</i> | sklizeň <i>Harvest</i> | sklizňová plocha <i>Harvested area</i> | hektarový výnos <i>Per hectare yield</i> | sklizeň <i>Harvest</i> | sklizňová plocha <i>Harvested area</i> | hektarový výnos <i>Per hectare yield</i> | sklizeň <i>Harvest</i> |
| | ha | t/ha | t | ha | t/ha | t | ha | t/ha | t |
| 1981 | 1 718 669 | 3,62 | 6 228 225 | 737 849 | 4,00 | 2 951 801 | 133 253 | 3,25 | 432 938 |
| 1982 | 1 694 848 | 3,98 | 6 750 834 | 669 768 | 4,41 | 2 956 216 | 132 309 | 3,46 | 457 448 |
| 1983 | 1 674 595 | 4,36 | 7 297 966 | 775 470 | 4,92 | 3 818 869 | 154 642 | 3,79 | 585 783 |
| 1984 | 1 649 116 | 4,72 | 7 781 903 | 795 030 | 5,08 | 4 034 960 | 141 862 | 3,80 | 539 732 |
| 1985 | 1 668 520 | 4,73 | 7 884 205 | 811 590 | 5,03 | 4 083 122 | 132 604 | 3,65 | 484 368 |
| 1986 | 1 672 080 | 4,26 | 7 128 158 | 803 601 | 4,39 | 3 530 781 | 109 394 | 3,60 | 394 056 |
| 1987 | 1 676 320 | 4,49 | 7 532 219 | 808 273 | 4,92 | 3 974 287 | 96 921 | 3,38 | 327 957 |
| 1988 | 1 655 290 | 4,55 | 7 532 215 | 818 157 | 5,02 | 4 105 038 | 96 957 | 3,78 | 366 763 |
| 1989 | 1 661 944 | 4,69 | 7 793 145 | 828 442 | 4,94 | 4 089 666 | 134 258 | 4,15 | 556 685 |
| 1990 | 1 639 715 | 5,46 | 8 946 879 | 820 379 | 5,64 | 4 624 190 | 124 593 | 4,48 | 557 712 |
| 1991 | 1 611 787 | 4,87 | 7 845 290 | 797 550 | 5,12 | 4 081 279 | 89 181 | 3,96 | 352 992 |
| 1992 | 1 583 160 | 4,15 | 6 564 898 | 757 548 | 4,51 | 3 412 943 | 65 505 | 3,66 | 240 067 |
| 1993 | 1 605 992 | 4,03 | 6 467 852 | 780 236 | 4,23 | 3 304 271 | 67 161 | 3,81 | 256 079 |
| 1994 | 1 654 149 | 4,10 | 6 777 231 | 810 810 | 4,58 | 3 713 476 | 78 548 | 3,51 | 275 654 |
| 1995 | 1 575 978 | 4,19 | 6 601 711 | 830 753 | 4,60 | 3 822 769 | 79 344 | 3,30 | 261 938 |
| 1996 | 1 581 033 | 4,20 | 6 644 145 | 798 610 | 4,67 | 3 727 203 | 63 597 | 3,21 | 204 279 |
| 1997 | 1 685 821 | 4,14 | 6 982 772 | 825 450 | 4,41 | 3 640 269 | 75 647 | 3,43 | 259 412 |
| 1998 | 1 678 285 | 3,97 | 6 668 920 | 912 301 | 4,21 | 3 844 741 | 71 861 | 3,63 | 261 167 |
| 1999 | 1 591 099 | 4,35 | 6 928 371 | 867 102 | 4,65 | 4 028 271 | 55 069 | 3,67 | 202 373 |
| 2000 | 1 650 114 | 3,91 | 6 454 237 | 970 435 | 4,21 | 4 084 107 | 43 881 | 3,42 | 150 052 |
| 2001 | 1 623 624 | 4,52 | 7 337 589 | 923 236 | 4,85 | 4 476 080 | 40 129 | 3,72 | 149 298 |
| 2002 | 1 562 117 | 4,33 | 6 770 829 | 848 830 | 4,56 | 3 866 473 | 35 332 | 3,37 | 119 154 |
| 2003 | 1 459 736 | 3,95 | 5 762 396 | 648 390 | 4,07 | 2 637 891 | 41 915 | 3,80 | 159 312 |
| 2004 | 1 609 351 | 5,46 | 8 783 801 | 863 161 | 5,84 | 5 042 523 | 59 209 | 5,29 | 313 348 |
| 2005 | 1 611 547 | 4,75 | 7 659 851 | 820 440 | 5,05 | 4 145 039 | 46 903 | 4,19 | 196 755 |
| 2006 | 1 531 996 | 4,17 | 6 386 078 | 781 519 | 4,49 | 3 506 252 | 22 481 | 3,33 | 74 811 |
| 2007 | 1 579 785 | 4,53 | 7 152 861 | 810 987 | 4,86 | 3 938 924 | 37 503 | 4,73 | 177 507 |
| 2008 | 1 558 596 | 5,37 | 8 369 503 | 802 325 | 5,77 | 4 631 502 | 43 399 | 4,83 | 209 787 |
| 2009 | 1 541 679 | 5,08 | 7 831 998 | 831 300 | 5,24 | 4 358 073 | 38 453 | 4,63 | 178 070 |
| 2010 | 1 462 836 | 4,70 | 6 877 619 | 833 577 | 4,99 | 4 161 553 | 30 249 | 3,91 | 118 233 |
| 2011 | 1 479 484 | 5,60 | 8 284 806 | 863 132 | 5,69 | 4 913 048 | 24 985 | 4,74 | 118 456 |
| 2012 | 1 454 435 | 4,53 | 6 595 493 | 815 381 | 4,32 | 3 518 896 | 30 557 | 4,81 | 146 962 |
| 2013 | 1 413 143 | 5,32 | 7 512 612 | 829 393 | 5,67 | 4 700 696 | 37 498 | 4,70 | 176 278 |
| 2014 | 1 409 610 | 6,23 | 8 779 299 | 835 941 | 6,51 | 5 442 349 | 25 137 | 5,13 | 129 059 |
| 2015 | 1 389 827 | 5,89 | 8 183 512 | 829 820 | 6,36 | 5 274 272 | 21 980 | 4,91 | 107 874 |
| 2016 | 1 359 014 | 6,33 | 8 596 408 | 839 710 | 6,50 | 5 454 663 | 20 951 | 4,98 | 104 353 |
| 2017 | 1 354 682 | 5,50 | 7 456 779 | 832 062 | 5,67 | 4 718 205 | 22 221 | 4,92 | 109 241 |
| 2018 | 1 338 780 | 5,21 | 6 970 919 | 819 690 | 5,39 | 4 417 841 | 25 355 | 4,74 | 120 160 |
| 2019 | 1 352 530 | 5,65 | 7 646 148 | 839 446 | 5,73 | 4 812 163 | 31 129 | 5,06 | 157 561 |
| 2020 | 1 344 877 | 6,04 | 8 126 663 | 798 583 | 6,14 | 4 902 414 | 31 432 | 5,48 | 172 364 |
| 2021 | 1 345 835 | 6,11 | 8 227 107 | 784 784 | 6,32 | 4 960 925 | 25 154 | 5,03 | 126 581 |
| 2022 | 1 386 011 | 5,93 | 8 218 416 | 854 434 | 6,07 | 5 188 687 | 24 124 | 5,31 | 128 154 |
| 2023 | 1 317 204 | 6,07 | 7 995 524 | 817 762 | 6,44 | 5 262 361 | 24 653 | 5,07 | 124 950 |
| 2024 | 1 307 641 | 5,75 | 7 520 785 | 776 502 | 5,96 | 4 625 367 | 24 301 | 4,35 | 105 640 |

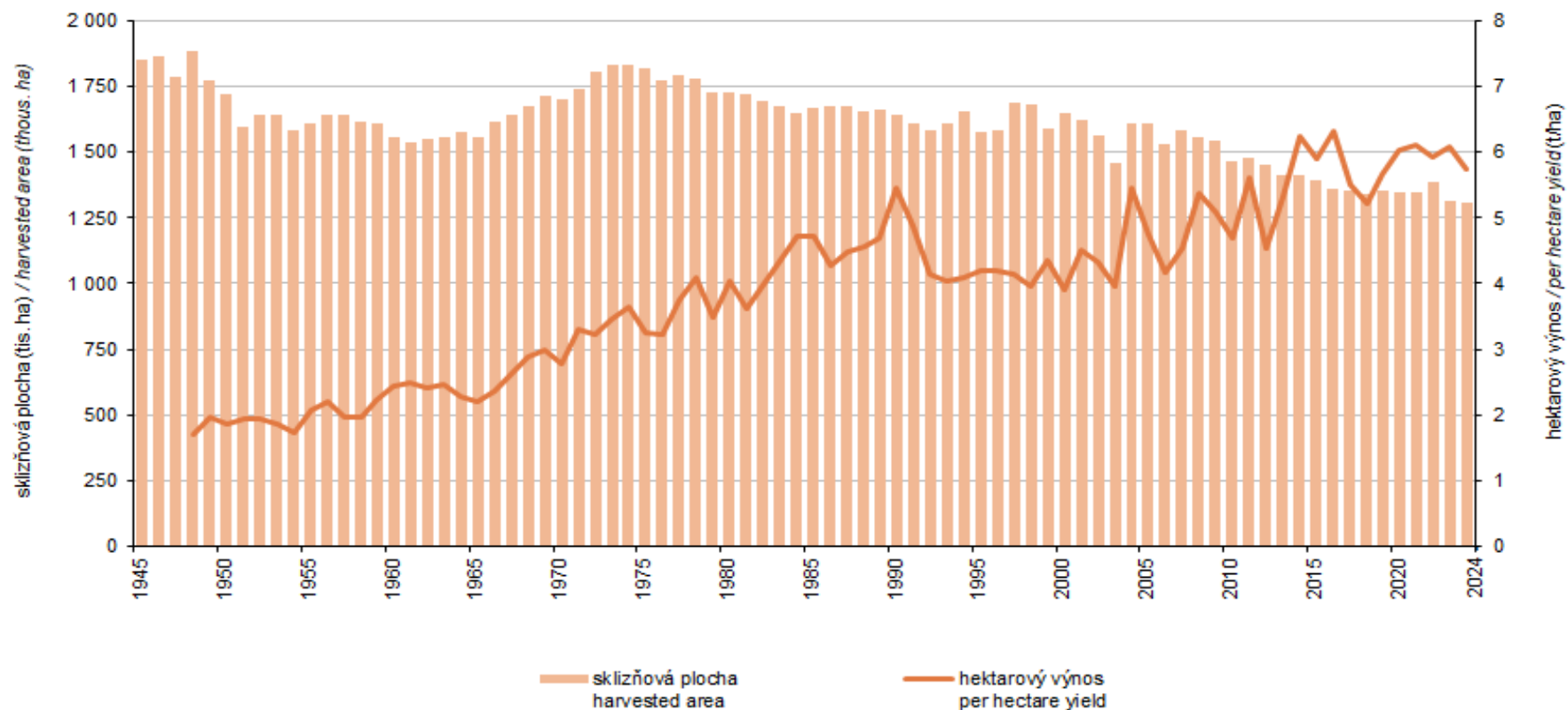
¹⁾ od roku 2002 pouze zemědělský sektor

¹⁾ do roku 1993 vč. směsi žita a pšenice (souřeže)

¹⁾ Only the agricultural sector since 2002.

¹⁾ Include mixtures of rye and wheat (maslin) until 1993.

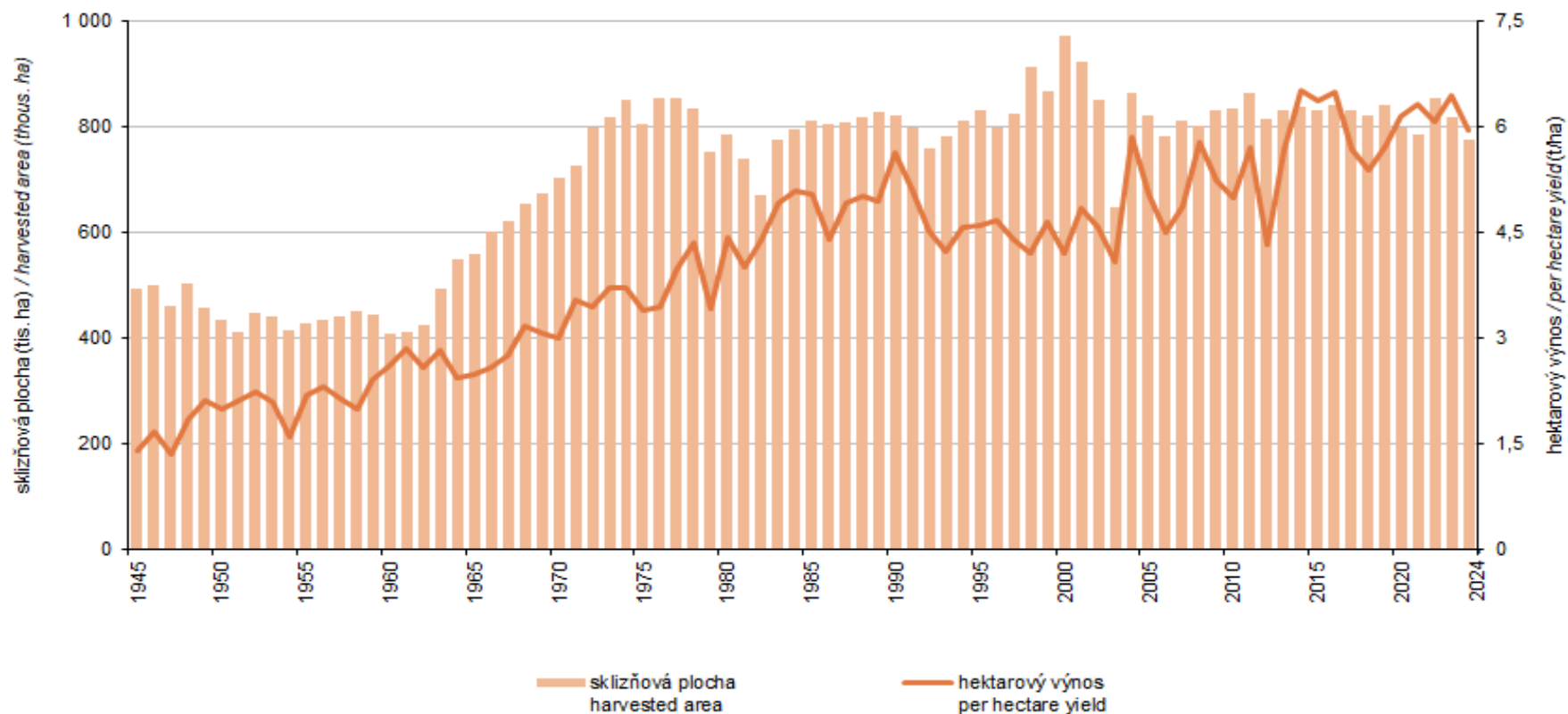
Graf 5.1.1.1 Sklizňová plocha, hektarový výnos - obiloviny celkem^{*)}
Harvested area, per hectare yield - Cereals for grain^{)}*



^{*)} od roku 2002 pouze zemědělský sektor / Only the agricultural sector since 2002.

Zdroj: ČSÚ
 Source: CZSO

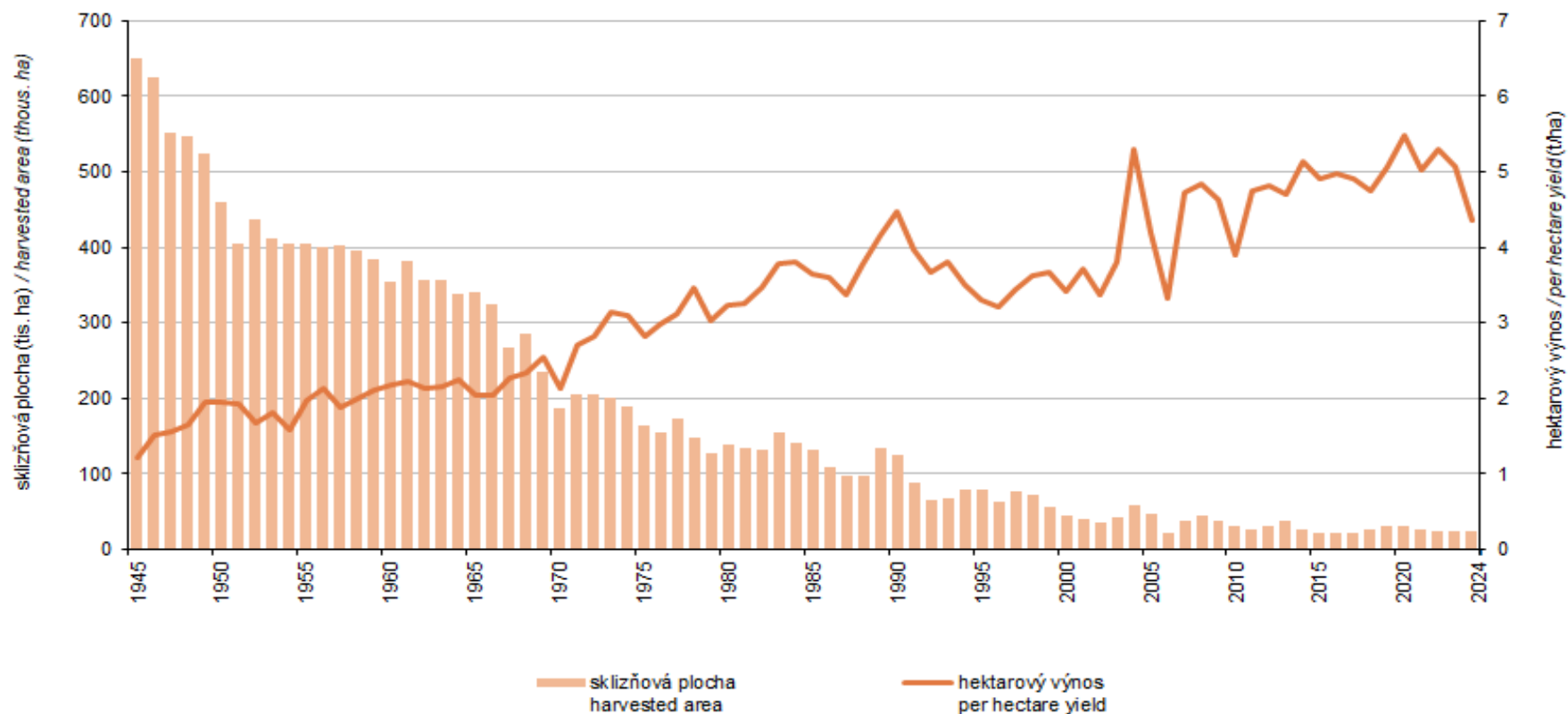
Graf 5.1.1.2 Sklizňová plocha, hektarový výnos - pšenice¹⁾
Harvested area, per hectare yield - Wheat¹⁾



¹⁾ od roku 2002 pouze zemědělský sektor / Only the agricultural sector since 2002.

Zdroj: ČSÚ
 Source: CZSO

Graf 5.1.1.3 Sklizňová plocha, hektarový výnos - žito¹⁾
Harvested area, per hectare yield - Rye¹⁾



¹⁾ od roku 2002 pouze zemědělský sektor / *Only the agricultural sector since 2002.*
do roku 1993 vč. směsi žita a pšenice (soureže) / *Include mixtures of rye and wheat (maslin) until 1993.*

Zdroj: ČSÚ
Source: CZSO

Tab. 5.1.2 Sklizňová plocha, hektarový výnos, sklizeň - ječmen, oves, kukuřice na zrno¹⁾
Harvested area, per hectare yield and harvest of crops - Barley, Oats, Grain maize¹⁾

| Rok Year | Ječmen Barley | | | Oves Oats | | | Kukuřice na zrno Grain maize | | |
|-------------|--|--|--------------------|--|--|--------------------|--|--|--------------------|
| | sklizňová plocha Harvested area | hektarový výnos Per hectare yield | sklizeň Harvest | sklizňová plocha Harvested area | hektarový výnos Per hectare yield | sklizeň Harvest | sklizňová plocha Harvested area | hektarový výnos Per hectare yield | sklizeň Harvest |
| | ha | t/ha | t | ha | t/ha | t | ha | t/ha | t |
| 1918 | 383 000 | 0,85 | 325 000 | 578 000 | 0,83 | 480 000 | - | - | - |
| 1919 | 370 000 | 1,30 | 481 000 | 570 000 | 1,21 | 690 000 | - | - | - |
| 1920 | 372 781 | 1,26 | 467 877 | 568 625 | 1,16 | 660 919 | 15 556 | 1,26 | 19 637 |
| 1921 | 341 437 | 1,79 | 612 377 | 566 348 | 1,44 | 815 200 | 16 765 | 1,30 | 21 848 |
| 1922 | 355 172 | 1,56 | 552 535 | 586 209 | 1,32 | 771 712 | 16 890 | 1,41 | 23 784 |
| 1923 | 362 579 | 1,91 | 693 217 | 605 630 | 1,73 | 1 047 130 | 16 793 | 1,92 | 32 306 |
| 1924 | 360 546 | 1,76 | 636 108 | 609 824 | 1,62 | 985 056 | 15 566 | 1,88 | 29 222 |
| 1925 | 378 442 | 1,99 | 753 716 | 602 927 | 1,71 | 1 032 043 | 15 090 | 2,08 | 31 388 |
| 1926 | 384 090 | 1,84 | 707 941 | 609 638 | 1,84 | 1 121 212 | 14 810 | 1,85 | 27 434 |
| 1927 | 385 760 | 2,12 | 819 144 | 617 608 | 1,92 | 1 185 468 | 14 299 | 2,06 | 29 439 |
| 1928 | 387 038 | 2,23 | 861 855 | 603 011 | 1,88 | 1 131 802 | 11 405 | 1,84 | 21 022 |
| 1929 | 402 795 | 2,13 | 857 407 | 626 949 | 1,90 | 1 193 611 | 9 085 | 1,88 | 17 070 |
| 1930 | 375 804 | 2,12 | 795 288 | 614 309 | 1,75 | 1 077 187 | 12 154 | 2,01 | 24 456 |
| 1931 | 409 897 | 1,91 | 781 471 | 615 481 | 1,72 | 1 056 366 | 9 296 | 1,78 | 16 589 |
| 1932 | 390 532 | 2,25 | 880 581 | 609 195 | 2,26 | 1 376 196 | 9 397 | 2,09 | 19 636 |
| 1933 | 354 352 | 2,23 | 791 340 | 595 555 | 2,17 | 1 292 920 | 8 930 | 1,89 | 16 875 |
| 1934 | 362 781 | 1,63 | 589 811 | 595 168 | 1,63 | 967 736 | 10 482 | 1,31 | 13 713 |
| 1935 | 345 248 | 1,81 | 624 432 | 579 247 | 1,41 | 819 357 | 10 960 | 1,60 | 17 590 |
| 1936 | 341 891 | 1,94 | 661 988 | 571 602 | 1,77 | 1 013 998 | 12 012 | 2,26 | 27 179 |
| 1937 | 377 470 | 2,05 | 772 328 | 582 580 | 2,01 | 1 171 905 | 14 096 | 2,43 | 34 205 |
| 1938 | 369 503 | 2,28 | 841 303 | 574 850 | 2,02 | 1 159 849 | 14 428 | 2,29 | 33 059 |
| · | | | | | | | | | |
| 1945 | 248 335 | 1,33 | 331 463 | 444 445 | 1,26 | 559 177 | 12 192 | 1,51 | 18 443 |
| 1946 | 258 504 | 1,51 | 389 363 | 469 017 | 1,47 | 688 815 | 13 864 | 1,48 | 20 571 |
| 1947 | 293 163 | 1,33 | 389 635 | 466 018 | 1,34 | 624 273 | 16 067 | 1,04 | 16 680 |
| 1948 | 310 616 | 1,73 | 537 872 | 500 349 | 1,62 | 812 433 | 20 460 | 1,72 | 35 176 |
| 1949 | 311 306 | 1,98 | 615 014 | 457 586 | 1,85 | 848 111 | 17 818 | 1,73 | 30 807 |
| 1950 | 340 993 | 1,92 | 654 880 | 464 846 | 1,57 | 731 420 | 17 408 | 1,56 | 27 115 |
| 1951 | 350 914 | 1,94 | 679 663 | 414 834 | 1,76 | 732 159 | 16 730 | 1,82 | 30 403 |
| 1952 | 345 596 | 2,00 | 689 861 | 394 827 | 1,87 | 739 593 | 17 269 | 1,72 | 29 755 |
| 1953 | 358 308 | 1,96 | 702 735 | 412 416 | 1,66 | 683 932 | 17 377 | 1,95 | 33 823 |
| 1954 | 355 813 | 1,87 | 665 861 | 386 081 | 1,86 | 717 339 | 16 677 | 2,04 | 33 987 |
| 1955 | 358 069 | 2,17 | 778 662 | 401 094 | 1,99 | 799 759 | 19 374 | 2,42 | 46 938 |
| 1956 | 366 898 | 2,27 | 833 613 | 413 935 | 2,04 | 845 834 | 25 614 | 2,77 | 70 878 |
| 1957 | 367 626 | 2,11 | 776 958 | 409 888 | 1,73 | 708 503 | 18 198 | 2,63 | 47 935 |
| 1958 | 368 414 | 1,97 | 724 474 | 382 770 | 1,84 | 705 428 | 17 684 | 2,77 | 49 007 |
| 1959 | 376 327 | 2,34 | 878 943 | 382 439 | 1,96 | 749 770 | 20 643 | 2,87 | 59 157 |
| 1960 | 391 529 | 2,68 | 1 047 673 | 380 398 | 2,18 | 827 636 | 20 983 | 3,16 | 66 389 |
| 1961 | 377 534 | 2,52 | 951 671 | 350 402 | 2,24 | 783 814 | 18 051 | 2,79 | 50 376 |
| 1962 | 399 059 | 2,69 | 1 071 535 | 351 126 | 2,13 | 746 349 | 17 634 | 2,42 | 42 683 |
| 1963 | 380 527 | 2,59 | 986 896 | 315 479 | 2,11 | 665 442 | 14 214 | 2,87 | 40 821 |
| 1964 | 375 936 | 2,44 | 917 372 | 303 390 | 1,90 | 575 437 | 12 813 | 3,25 | 41 683 |
| 1965 | 362 029 | 2,24 | 812 494 | 283 980 | 1,83 | 520 098 | 10 340 | 2,53 | 26 176 |
| 1966 | 374 579 | 2,51 | 939 136 | 302 375 | 2,03 | 613 896 | 11 023 | 3,22 | 35 543 |
| 1967 | 394 754 | 2,96 | 1 166 804 | 342 665 | 2,33 | 797 916 | 11 816 | 3,19 | 37 734 |
| 1968 | 404 885 | 3,20 | 1 296 492 | 322 167 | 2,34 | 752 585 | 12 453 | 3,86 | 48 075 |
| 1969 | 467 169 | 3,39 | 1 584 036 | 328 005 | 2,54 | 832 634 | 11 229 | 3,60 | 40 478 |
| 1970 | 495 345 | 3,01 | 1 488 943 | 306 338 | 2,18 | 669 031 | 12 494 | 3,88 | 48 520 |
| 1971 | 521 447 | 3,46 | 1 805 347 | 276 573 | 2,79 | 770 402 | 12 817 | 3,30 | 42 336 |
| 1972 | 527 447 | 3,36 | 1 770 469 | 260 542 | 2,49 | 648 038 | 16 604 | 4,39 | 72 882 |
| 1973 | 566 622 | 3,50 | 1 980 470 | 229 237 | 2,91 | 666 686 | 16 431 | 3,60 | 59 166 |
| 1974 | 585 557 | 3,87 | 2 264 365 | 189 570 | 3,26 | 617 791 | 15 359 | 3,77 | 57 874 |
| 1975 | 653 648 | 3,27 | 2 134 180 | 181 429 | 2,96 | 537 018 | 13 316 | 4,30 | 57 299 |
| 1976 | 610 412 | 3,24 | 1 976 550 | 145 458 | 2,23 | 324 223 | 11 247 | 3,02 | 33 957 |
| 1977 | 598 538 | 3,84 | 2 300 384 | 144 896 | 2,84 | 410 870 | 20 282 | 4,27 | 86 529 |
| 1978 | 664 799 | 4,02 | 2 670 910 | 117 309 | 3,54 | 415 372 | 16 406 | 3,66 | 60 056 |
| 1979 | 717 083 | 3,62 | 2 596 962 | 110 206 | 3,29 | 362 661 | 22 366 | 4,59 | 102 552 |
| 1980 | 673 297 | 3,85 | 2 589 619 | 107 628 | 3,55 | 382 443 | 22 219 | 3,98 | 88 349 |

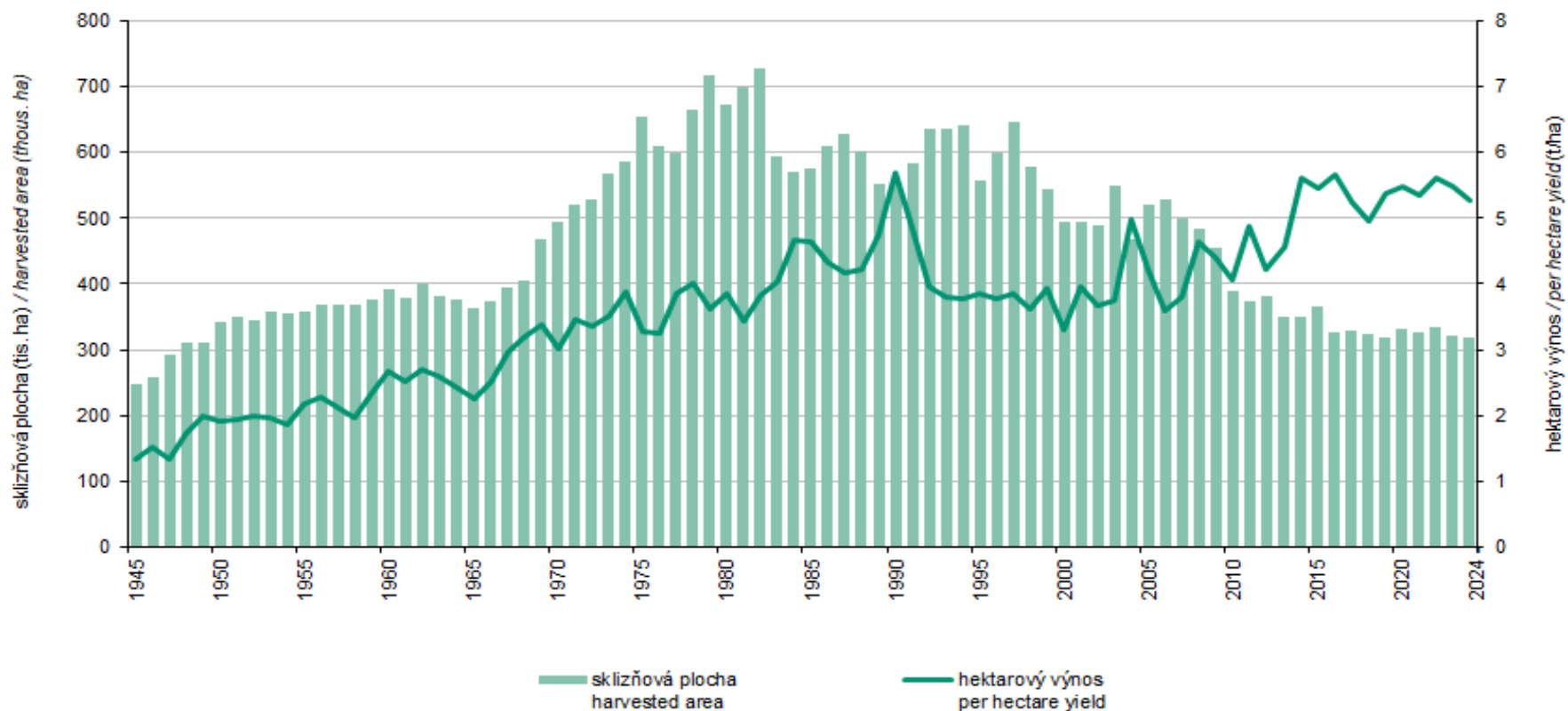
Tab. 5.1.2 Sklizňová plocha, hektarový výnos, sklizeň - ječmen, oves, kukuřice na zrno¹⁾
Harvested area, per hectare yield and harvest of crops - Barley, Oats, Grain maize¹⁾

| Rok Year | Ječmen Barley | | | Oves Oats | | | Kukuřice na zrno Grain maize | | |
|-------------|--|--|--------------------|--|--|--------------------|--|--|--------------------|
| | sklizňová plocha Harvested area | hektarový výnos Per hectare yield | sklizeň Harvest | sklizňová plocha Harvested area | hektarový výnos Per hectare yield | sklizeň Harvest | sklizňová plocha Harvested area | hektarový výnos Per hectare yield | sklizeň Harvest |
| | ha | t/ha | t | ha | t/ha | t | ha | t/ha | t |
| 1981 | 697 556 | 3,42 | 2 382 724 | 128 786 | 2,98 | 383 699 | 20 993 | 3,65 | 76 681 |
| 1982 | 728 812 | 3,82 | 2 787 594 | 143 023 | 3,12 | 445 757 | 20 444 | 5,03 | 102 831 |
| 1983 | 593 228 | 4,03 | 2 393 403 | 129 735 | 3,29 | 426 308 | 21 195 | 3,45 | 73 111 |
| 1984 | 570 072 | 4,67 | 2 664 111 | 113 515 | 3,78 | 428 521 | 28 401 | 4,02 | 114 260 |
| 1985 | 576 734 | 4,64 | 2 678 479 | 105 321 | 4,07 | 428 493 | 41 852 | 5,00 | 209 144 |
| 1986 | 609 544 | 4,32 | 2 633 605 | 99 924 | 3,68 | 367 274 | 47 783 | 4,18 | 199 871 |
| 1987 | 626 992 | 4,18 | 2 621 529 | 94 017 | 3,81 | 358 417 | 48 491 | 5,11 | 247 606 |
| 1988 | 600 601 | 4,21 | 2 527 927 | 89 256 | 3,59 | 320 662 | 39 390 | 4,35 | 171 297 |
| 1989 | 551 787 | 4,74 | 2 613 658 | 87 582 | 3,21 | 280 979 | 41 183 | 4,24 | 174 596 |
| 1990 | 555 159 | 5,69 | 3 157 299 | 79 596 | 4,70 | 373 951 | 30 882 | 3,19 | 98 381 |
| 1991 | 583 134 | 4,86 | 2 833 023 | 74 922 | 4,03 | 301 682 | 34 764 | 4,32 | 150 280 |
| 1992 | 635 976 | 3,95 | 2 512 490 | 68 175 | 3,05 | 207 918 | 30 464 | 3,40 | 103 720 |
| 1993 | 636 461 | 3,80 | 2 418 517 | 69 509 | 3,78 | 262 594 | 32 217 | 4,87 | 157 045 |
| 1994 | 640 367 | 3,78 | 2 419 297 | 76 306 | 2,72 | 207 562 | 26 964 | 3,39 | 91 396 |
| 1995 | 557 616 | 3,84 | 2 140 487 | 60 236 | 3,10 | 186 693 | 26 441 | 4,28 | 113 274 |
| 1996 | 599 847 | 3,77 | 2 262 377 | 65 541 | 3,27 | 214 163 | 33 123 | 5,09 | 168 684 |
| 1997 | 646 492 | 3,84 | 2 484 548 | 77 570 | 3,18 | 246 637 | 41 184 | 6,92 | 285 199 |
| 1998 | 577 694 | 3,62 | 2 093 101 | 57 688 | 3,11 | 179 671 | 32 907 | 6,09 | 200 562 |
| 1999 | 542 910 | 3,94 | 2 137 376 | 53 988 | 3,32 | 179 130 | 39 447 | 6,60 | 260 495 |
| 2000 | 494 737 | 3,29 | 1 629 372 | 50 117 | 2,71 | 135 858 | 47 283 | 6,43 | 303 957 |
| 2001 | 495 128 | 3,97 | 1 965 611 | 47 802 | 2,85 | 136 363 | 61 938 | 6,60 | 408 653 |
| 2002 | 488 070 | 3,67 | 1 792 557 | 61 027 | 2,75 | 167 708 | 70 570 | 8,73 | 616 234 |
| 2003 | 549 955 | 3,76 | 2 068 693 | 77 371 | 3,02 | 233 560 | 85 426 | 5,58 | 476 371 |
| 2004 | 468 995 | 4,97 | 2 330 582 | 58 572 | 3,88 | 227 017 | 89 921 | 6,13 | 551 628 |
| 2005 | 521 527 | 4,21 | 2 195 376 | 51 667 | 2,92 | 151 054 | 98 044 | 7,17 | 702 933 |
| 2006 | 528 145 | 3,59 | 1 897 703 | 57 697 | 2,68 | 154 906 | 89 798 | 6,75 | 606 366 |
| 2007 | 498 692 | 3,80 | 1 893 408 | 59 016 | 2,70 | 159 408 | 111 660 | 6,80 | 758 781 |
| 2008 | 482 395 | 4,65 | 2 243 865 | 49 049 | 3,18 | 155 868 | 113 777 | 7,54 | 858 407 |
| 2009 | 454 820 | 4,40 | 2 003 032 | 50 021 | 3,32 | 165 993 | 105 268 | 8,45 | 889 574 |
| 2010 | 388 925 | 4,07 | 1 584 456 | 52 278 | 2,64 | 138 244 | 103 276 | 6,71 | 692 589 |
| 2011 | 372 780 | 4,87 | 1 813 679 | 45 236 | 3,63 | 164 248 | 121 006 | 8,79 | 1 063 736 |
| 2012 | 382 330 | 4,23 | 1 616 467 | 50 770 | 3,39 | 171 976 | 119 333 | 7,78 | 928 147 |
| 2013 | 348 992 | 4,57 | 1 593 760 | 43 559 | 3,19 | 139 120 | 96 902 | 6,97 | 675 380 |
| 2014 | 350 518 | 5,61 | 1 967 049 | 42 289 | 3,60 | 152 232 | 98 749 | 8,43 | 832 235 |
| 2015 | 365 946 | 5,44 | 1 991 415 | 42 395 | 3,65 | 154 576 | 79 972 | 5,54 | 442 709 |
| 2016 | 325 725 | 5,67 | 1 845 254 | 37 566 | 3,52 | 132 220 | 86 407 | 9,79 | 845 765 |
| 2017 | 327 707 | 5,23 | 1 712 279 | 44 065 | 3,23 | 142 441 | 85 995 | 6,84 | 588 105 |
| 2018 | 324 724 | 4,95 | 1 606 034 | 42 821 | 3,56 | 152 656 | 81 851 | 5,98 | 489 154 |
| 2019 | 319 583 | 5,38 | 1 718 061 | 42 530 | 3,16 | 134 410 | 74 827 | 8,29 | 620 261 |
| 2020 | 331 911 | 5,47 | 1 816 182 | 46 740 | 3,92 | 183 357 | 87 231 | 9,46 | 825 499 |
| 2021 | 326 743 | 5,35 | 1 749 134 | 57 715 | 3,37 | 194 745 | 102 438 | 9,65 | 988 038 |
| 2022 | 334 504 | 5,61 | 1 877 363 | 45 147 | 3,72 | 167 995 | 80 453 | 7,95 | 639 467 |
| 2023 | 321 133 | 5,49 | 1 764 205 | 42 997 | 2,76 | 118 593 | 64 369 | 7,88 | 507 540 |
| 2024 | 317 119 | 5,27 | 1 671 527 | 52 618 | 3,81 | 200 638 | 87 482 | 8,14 | 712 241 |

¹⁾ od roku 2002 pouze zemědělský sektor

¹⁾ Only the agricultural sector since 2002.

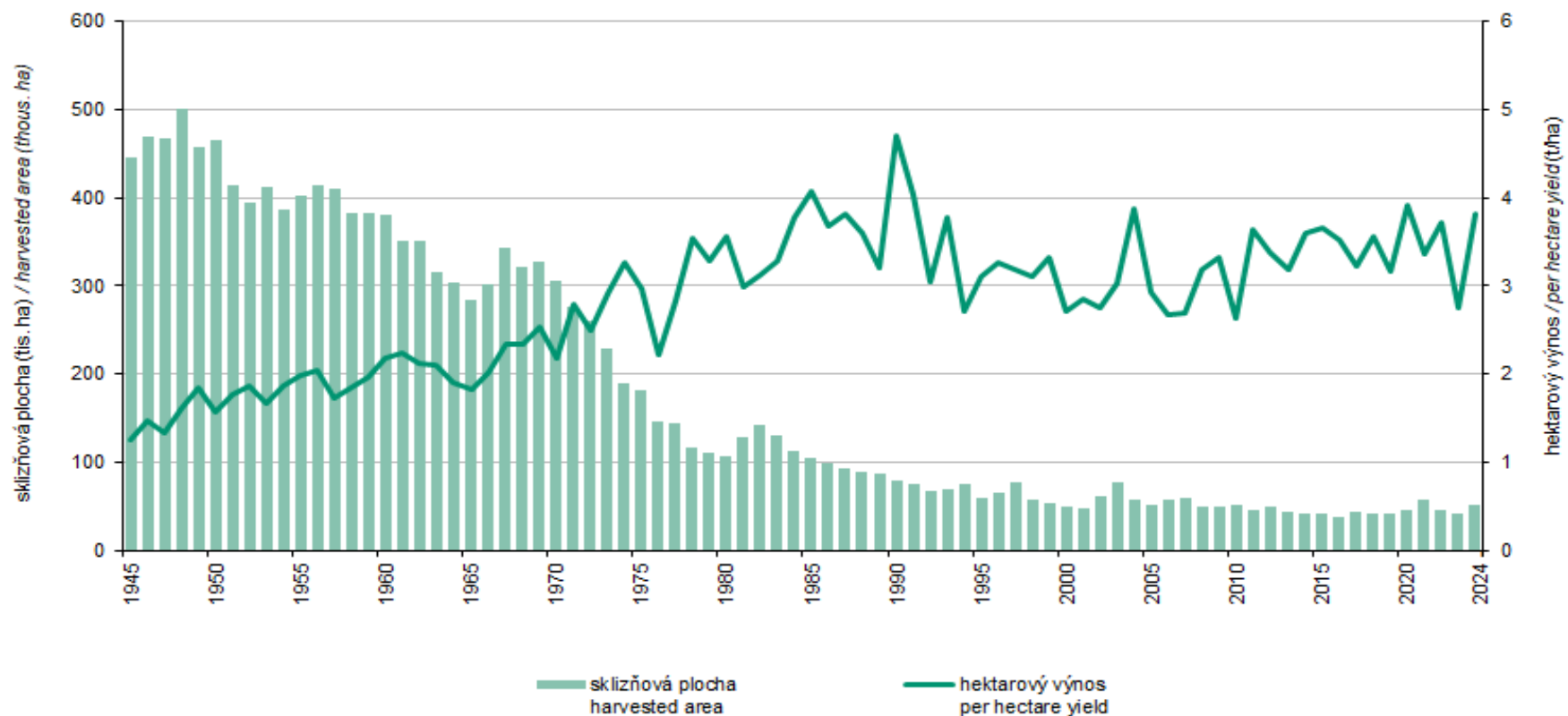
Graf 5.1.2.1 Sklizňová plocha, hektarový výnos - ječmen¹⁾
Harvested area, per hectare yield - Barley¹⁾



¹⁾ od roku 2002 pouze zemědělský sektor / Only the agricultural sector since 2002.

Zdroj: ČSÚ
 Source: CZSO

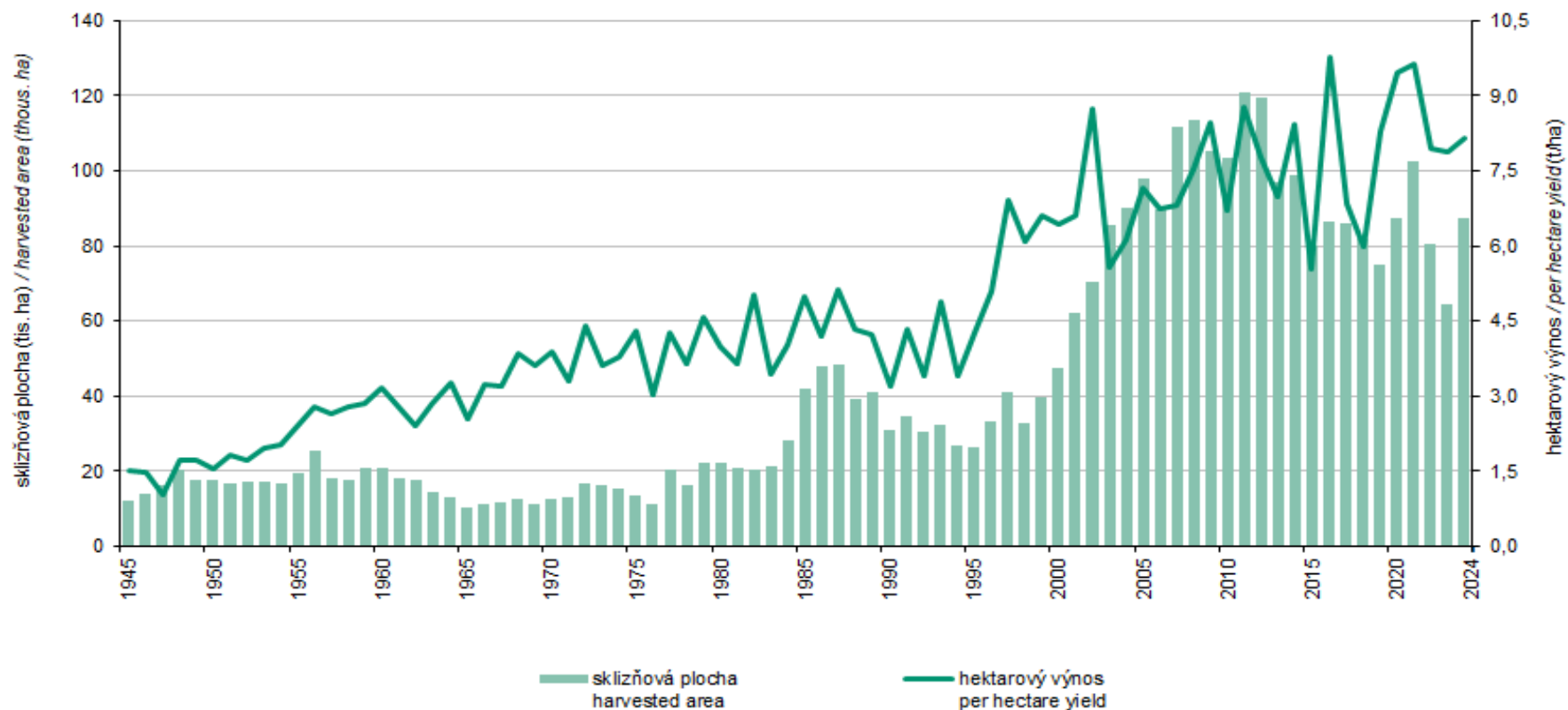
Graf 5.1.2.2 Sklizňová plocha, hektarový výnos - oves¹⁾
 Harvested area, per hectare yield - Oats¹⁾



¹⁾ od roku 2002 pouze zemědělský sektor / Only the agricultural sector since 2002.

Zdroj: ČSÚ
 Source: CZSO

Graf 5.1.2.3 Sklizňová plocha, hektarový výnos - kukuřice na zrno^{*)}
Harvested area, per hectare yield - Grain maize^{)}*



^{*)} od roku 2002 pouze zemědělský sektor / Only the agricultural sector since 2002.

Zdroj: ČSÚ
 Source: CZSO