

T13 **Výroba masa a nákup mléka**
Meat production and milk collection

- 01 Tab. 13 Výroba masa a nákup mléka
Tab. 13 Meat production and milk collection
- 02 Graf 13.1 Výroba masa
Graph 13.1 Production of meat
- 03 Graf 13.2 Nákup mléka mlékárnami
Graph 13.2 Milk collections by dairies
- 04 Graf 13.3 Hovězí maso
Graph 13.3 Beef
- 05 Graf 13.4 Vepřové maso
Graph 13.4 Pigu meat
- 06 Graf 13.5 Drůbeží maso
Graph 13.5 Poultry meat
- 07 Graf 13.6 Ostatní maso
Graph 13.6 Other meat
- 08 Graf 13.7 Struktura výroby masa - hovězí
Graph 13.7 Structure of production of the meat - beef

Tab. 13 Výroba masa a nákup mléka
Meat production and milk collection

| Rok Year | Výroba masa ¹⁾ Meat production ¹⁾ | | | | | | | | | | | | | | Nákup mléka Milk collection | | | |
|-------------|--|--------------------------------|---------------|------------------|---------------------|---------------|-------------------------------|------------------|----------------------------|--------------------|-------------------|-----------------|------------------|---------------------|--|---|--|--|
| | celkem Total | hovězí celkem Beef total | v tom | | | | | | | vepřové Pigmeat | skopové Mutton | jehněčí Lamb | kozí Goatmeat | koňské Horsemeat | drůbeží ²⁾ Poultry meat ²⁾ | přímý od producentů Direct milk collection | z toho mlékárnami Of which by dairies | |
| | | | býci Bulls | volí Bullocks | jalovice Heifers | krávy Cows | mladý skot Young cattle | telata Calves | tis. litrů / thous. litres | | | | | | | | | |
| | | | tuny / tonnes | | | | | | | | | | | | | | | |
| 2000 | 703 052 | 108 161 | - | - | - | - | - | 735 | 396 107 | 51 | 71 | 15 | 189 | 198 457 | - | 2 493 411 | | |
| 2001 | 714 474 | 106 045 | - | - | - | - | - | 745 | 400 546 | 46 | 82 | 11 | 110 | 207 634 | - | 2 512 005 | | |
| 2002 | 742 170 | 109 495 | - | - | - | - | - | 880 | 410 705 | 41 | 102 | 10 | 99 | 221 719 | - | 2 523 749 | | |
| 2003 | 731 648 | 108 125 | - | - | - | - | - | 872 | 411 194 | 36 | 104 | 5 | 82 | 212 101 | - | 2 530 871 | | |
| 2004 | 691 301 | 96 660 | 49 827 | 112 | 8 169 | 37 696 | - | 856 | 376 723 | 54 | 117 | 4 | 65 | 217 678 | - | 2 495 830 | | |
| 2005 | 647 728 | 81 031 | 41 437 | 99 | 6 416 | 32 517 | - | 562 | 339 635 | 66 | 147 | 5 | 82 | 226 762 | - | 2 476 308 | | |
| 2006 | 628 587 | 79 187 | - | - | - | - | - | 477 | 333 015 | 47 | 146 | 4 | 77 | 216 111 | - | 2 329 673 | | |
| 2007 | 626 297 | 79 328 | 43 965 | 109 | 5 373 | 29 415 | - | 465 | 340 863 | 58 | 149 | 5 | 68 | 205 826 | - | 2 389 658 | | |
| 2008 | 598 953 | 80 020 | 43 667 | 116 | 5 609 | 30 053 | - | 575 | 316 985 | 66 | 120 | 4 | 65 | 201 693 | - | 2 368 602 | | |
| 2009 | 556 066 | 77 026 | 37 876 | 98 | 6 176 | 32 327 | - | 547 | 284 572 | 51 | 95 | 4 | 66 | 194 252 | - | 2 291 670 | | |
| 2010 | 538 554 | 74 259 | 37 548 | 114 | 5 983 | 29 745 | 340 | 529 | 275 905 | 44 | 101 | 4 | 63 | 188 177 | - | 2 251 437 | | |
| 2011 | 505 397 | 72 125 | 35 951 | 101 | 5 774 | 29 508 | 282 | 509 | 262 944 | 47 | 112 | 4 | 81 | 170 084 | - | 2 303 899 | | |
| 2012 | 458 329 | 65 713 | 30 675 | 132 | 5 612 | 28 490 | 334 | 469 | 239 753 | 47 | 119 | 5 | 80 | 152 613 | - | 2 381 826 | | |
| 2013 | 447 525 | 64 825 | 32 228 | 55 | 5 268 | 26 563 | 263 | 448 | 234 273 | 49 | 127 | 4 | 74 | 148 174 | - | 2 319 502 | | |
| 2014 | 451 186 | 65 529 | 34 650 | 83 | 4 741 | 25 304 | 290 | 460 | 235 991 | 43 | 146 | 3 | 64 | 149 410 | - | 2 350 676 | | |
| 2015 | 447 651 | 68 286 | 35 373 | 164 | 5 261 | 26 749 | 281 | 458 | 227 739 | 50 | 130 | 3 | 36 | 151 406 | - | 2 434 656 | | |
| 2016 | 448 967 | 71 932 | 35 842 | 191 | 5 523 | 29 653 | 258 | 466 | 220 334 | 57 | 121 | 3 | 27 | 156 492 | 2 719 762 | 2 458 634 | | |
| 2017 | 437 835 | 67 714 | 33 246 | 159 | 5 724 | 27 907 | 263 | 415 | 211 001 | 55 | 133 | 4 | 22 | 158 906 | 2 901 009 | 2 478 079 | | |
| 2018 | 447 010 | 71 579 | - | 218 | 6 067 | 29 648 | 324 | 398 | 210 910 | 75 | 151 | 7 | 27 | 164 261 | 2 953 279 | 2 525 256 | | |
| 2019 | 450 774 | 72 892 | 36 887 | 201 | 6 412 | 28 765 | 277 | 349 | 209 604 | 65 | 149 | 9 | 11 | 168 044 | 2 992 689 | 2 497 056 | | |
| 2020 | 454 846 | 72 518 | 36 969 | 215 | 6 625 | 28 075 | 278 | 357 | 211 436 | 41 | 111 | 6 | 9 | 170 725 | 3 108 099 | 2 614 347 | | |
| 2021 | 466 856 | 72 552 | 36 947 | 234 | 6 620 | 28 032 | 341 | 378 | 217 008 | 42 | 84 | 4 | 9 | 177 157 | 3 046 486 | 2 645 039 | | |
| 2022 | 447 317 | 68 583 | 33 623 | 216 | 6 252 | 27 782 | 388 | 322 | 208 634 | 45 | 80 | 4 | 7 | 169 964 | 3 089 203 | 2 665 773 | | |
| 2023 | 435 908 | 70 230 | 32 839 | 287 | 6 738 | 29 658 | 395 | 313 | 197 859 | 53 | 70 | 3 | 7 | 167 687 | 3 138 215 | 2 694 689 | | |
| 2024 | 450 075 | 68 831 | 30 448 | 262 | 7 224 | 30 198 | 375 | 325 | 211 588 | 56 | 58 | 3 | 5 | 169 534 | 3 191 092 | 2 757 996 | | |

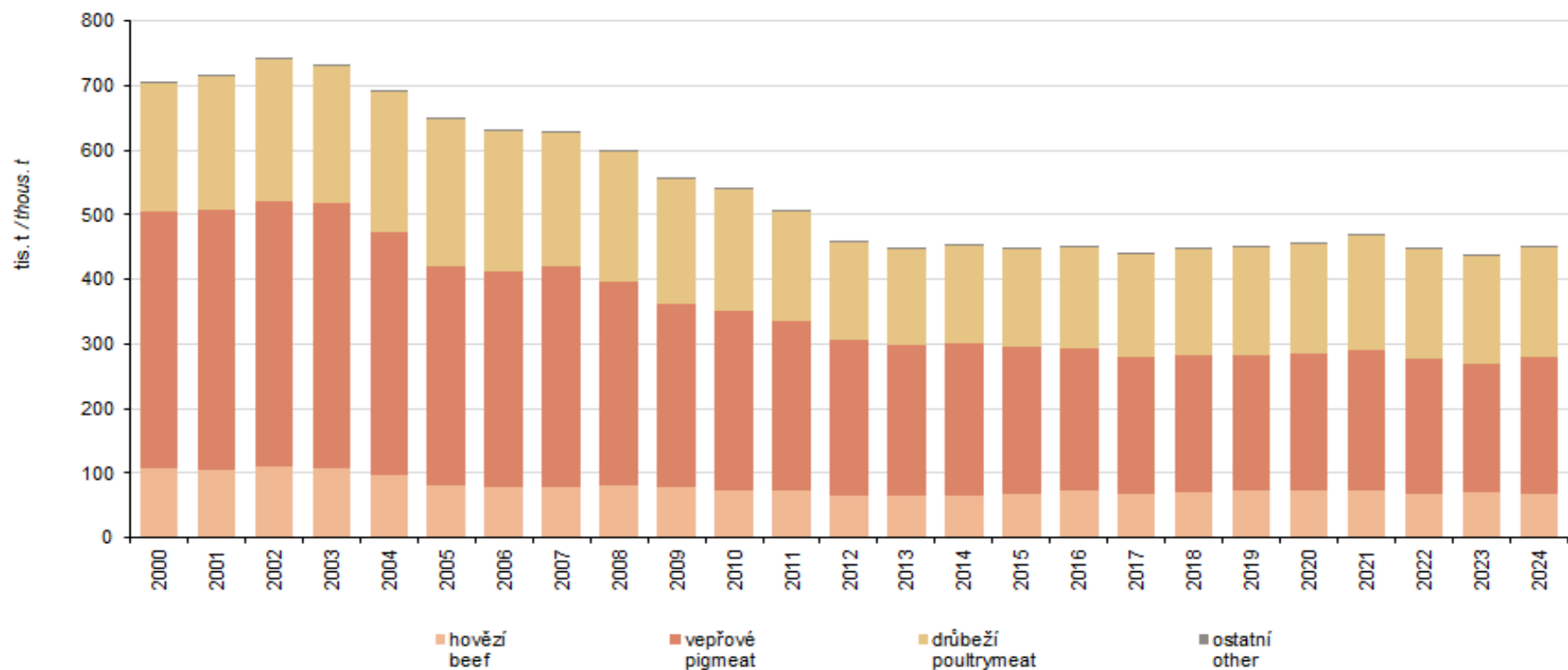
¹⁾ od roku 2006 změna metodiky

²⁾ od roku 2012 maso bez drobů

¹⁾ Since 2006 change of methodology.

²⁾ Since 2012 poultrymeat without giblets.

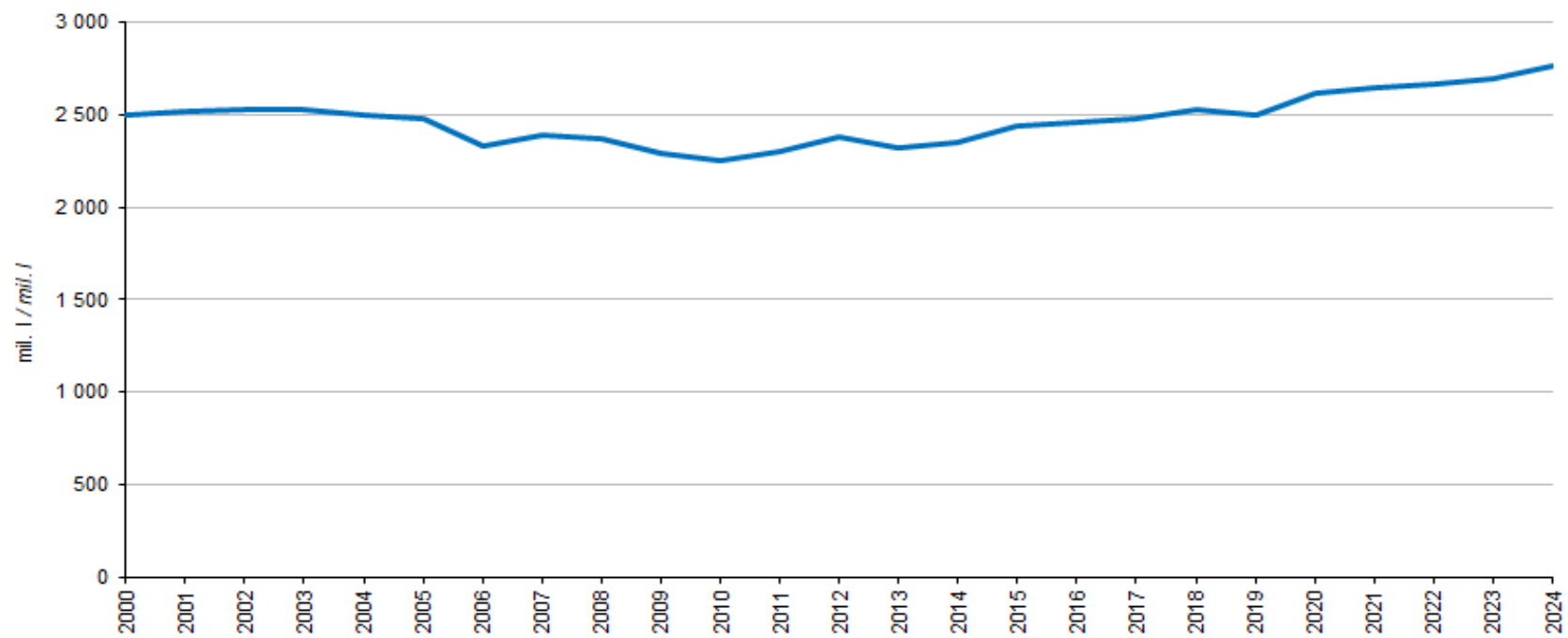
Graf 13.1 Výroba masa¹⁾
Production of meat¹⁾



¹⁾ od roku 2006 změna metodiky / Since 2006 change of methodology.

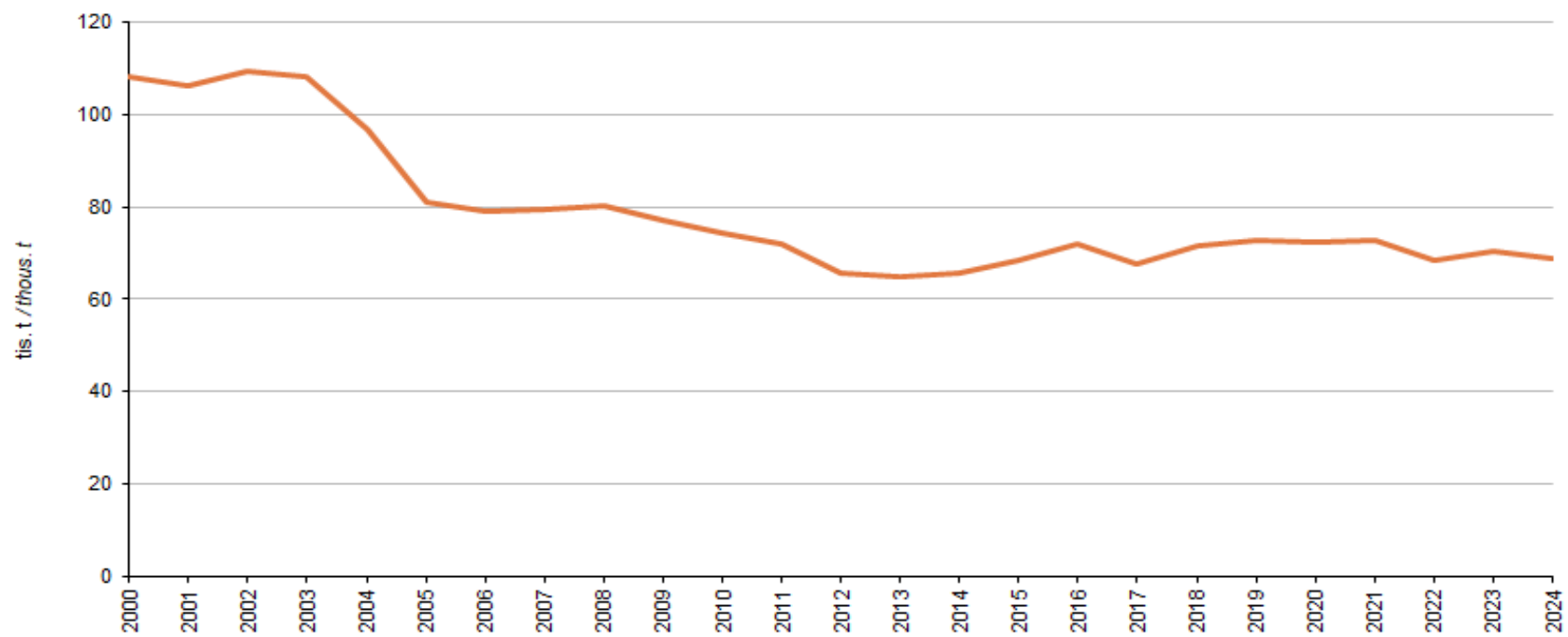
Zdroj: ČSÚ
 Source: CZSO

Graf 13.2 Nákup mléka mlékárnami
Milk collections by dairies



Zdroj: ČSÚ
Source: CZSO

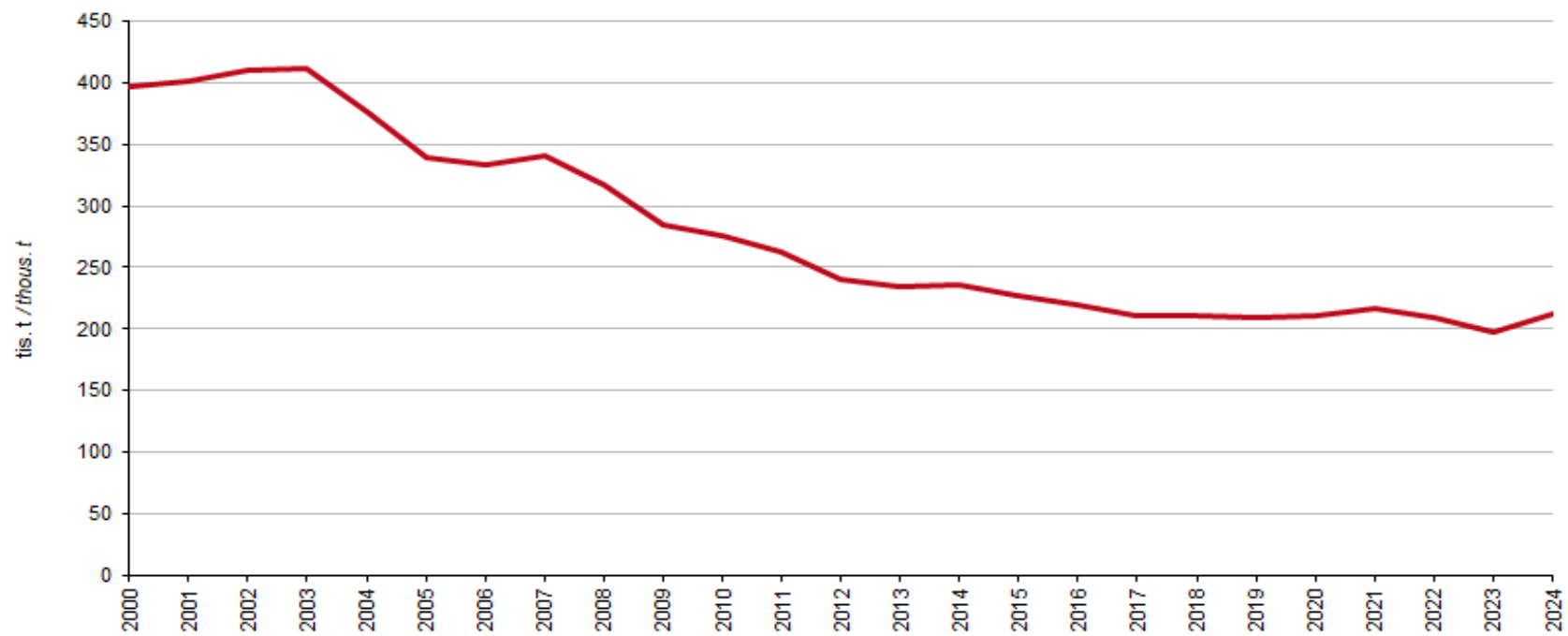
Graf 13.3 Hovězí maso¹⁾
Beef ¹⁾



¹⁾ od roku 2006 změna metodiky / Since 2006 change of methodology.

Zdroj: ČSÚ
Source: CZSO

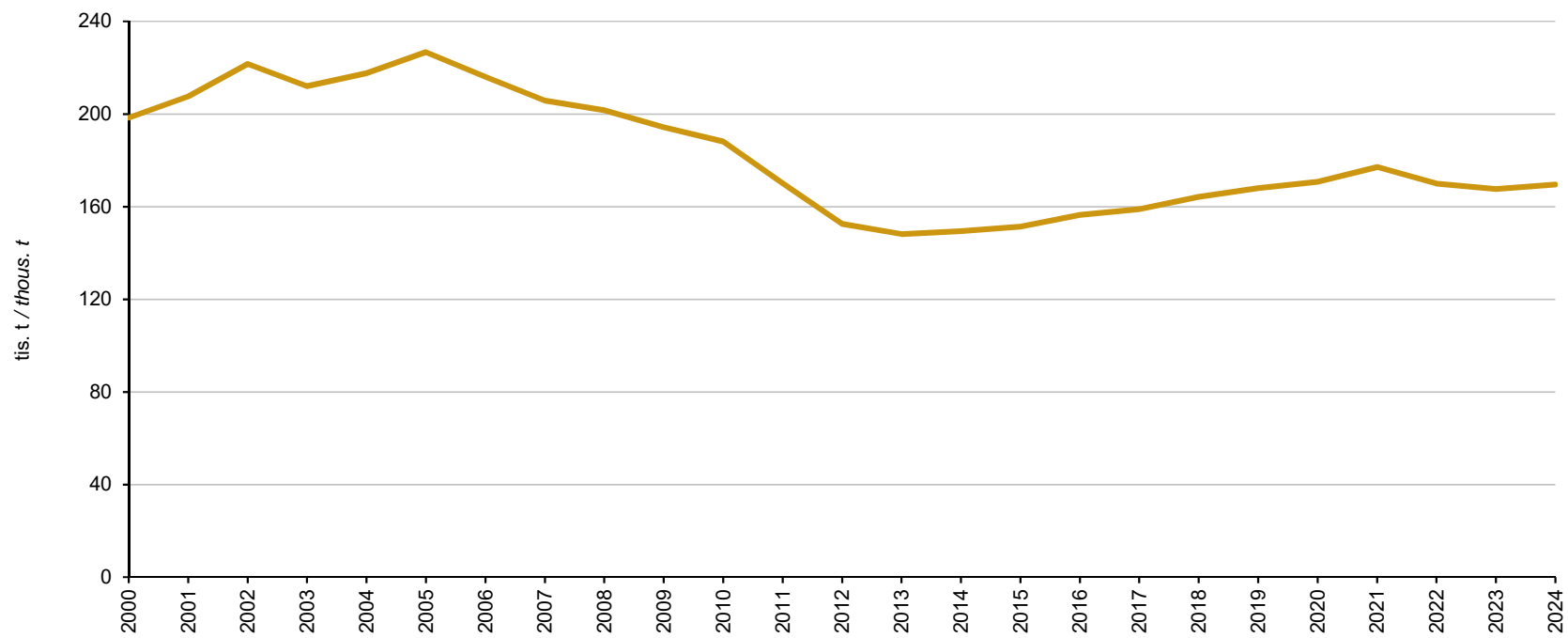
Graf 13.4 Vepřové maso¹⁾
Pigmeat¹⁾



¹⁾ od roku 2006 změna metodiky / Since 2006 change of methodology.

Zdroj: ČSÚ
Source: CZSO

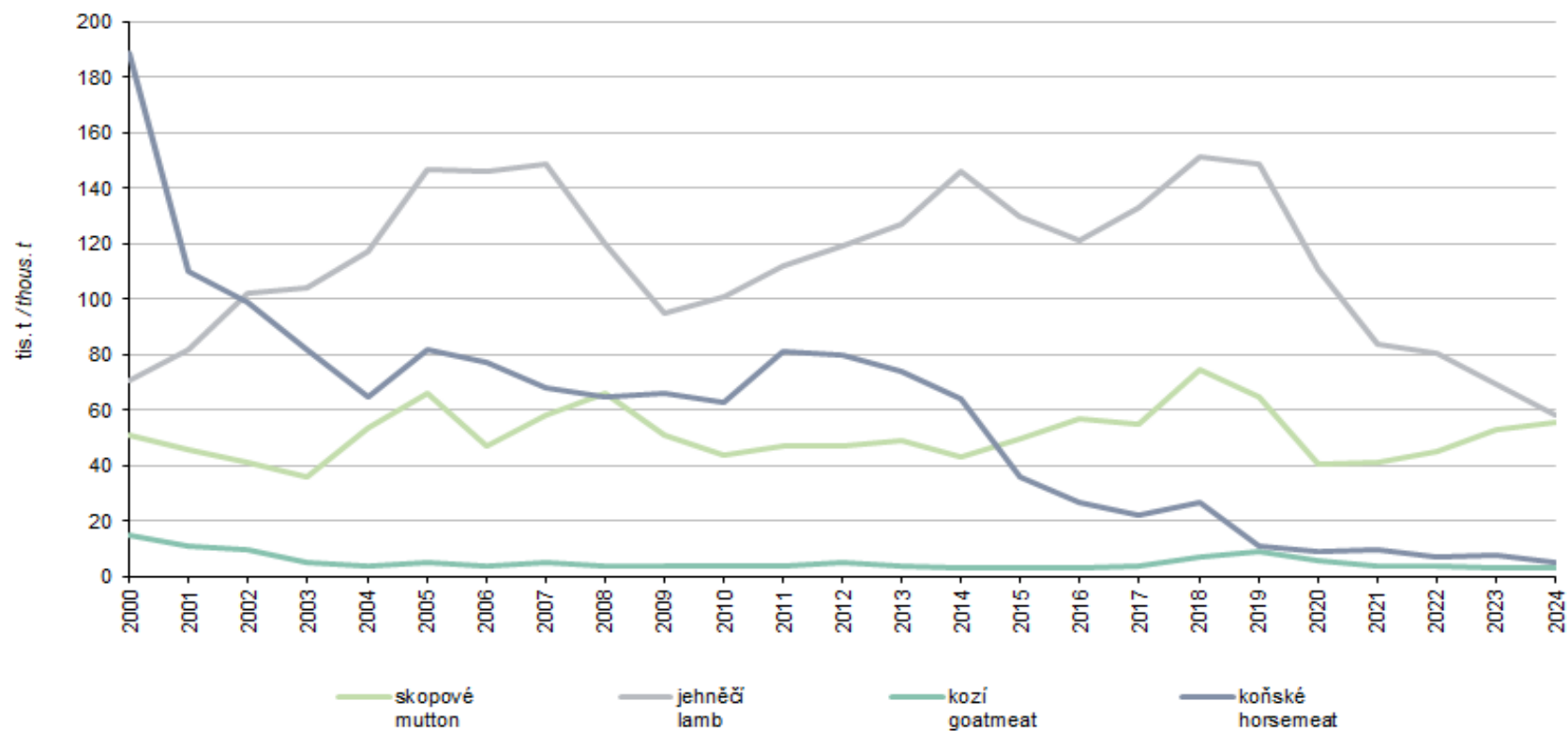
Graf 13.5 Drůbeží maso¹⁾
Poultry meat¹⁾



¹⁾ od roku 2006 změna metodiky / *Since 2006 change of methodology.*
od roku 2012 maso bez drobů / *Since 2012 poultry meat without giblets.*

Zdroj: ČSÚ
Source: CZSO

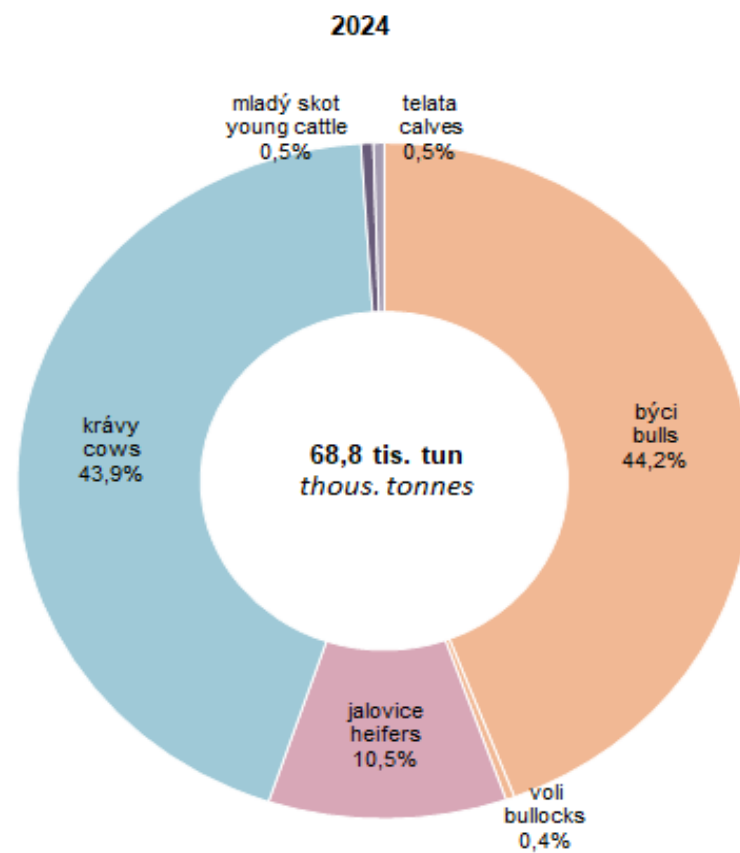
Graf 13.6 Ostatní maso¹⁾
Other meat¹⁾



¹⁾ od roku 2006 změna metodiky / Since 2006 change of methodology.
od roku 2012 maso bez drobů / Since 2012 poultry meat without giblets.

Zdroj: ČSÚ
Source: CZSO

Graf 13.7 Struktura výroby masa - hovězí
Structure of production of meat - beef



Zdroj: ČSÚ
Source: CZSO