

ANALYSIS

19 May 2015

External Trade Price Indices Development in Q1 2015

Export prices in Q1 2015, compared to Q4 2014, decreased by 0.5%, import prices fell by 1.1% and terms of trade reached 100.6%. Compared year-on year (y-o-y) export prices in Q1 2015 decreased by 0.5%, import prices declined by 1.5%, and terms of trade reached 101.0%.

Quarter-on-quarter (q-o-q) comparison:

Export prices in Q1 2015, compared to Q4 2014, decreased by 0.5% (in Q4 2014 they fell by 0.3%). The highest price decreases were observed in 'mineral fuels, lubricants and related materials' by 7.2%, 'chemicals and related products' by 5.4%, 'crude materials, inedible, except fuels' by 2.7%, and 'miscellaneous manufactured articles' by 0.4%. In export prices, among the more important groups of goods, prices increased solely in 'machinery and transport equipment' by 0.4%.

Import prices in Q1 2015, compared to Q4 2014, decreased by 1.1% (in Q4 2014 they fell by 0.3%). Highest prices drops were observed in 'mineral fuels, lubricants and related materials' by 13.1%, 'crude materials, inedible, except fuels' by 3.1%, and in 'chemicals and related products' by 3.0%. In import prices of important groups of goods highest price increases were recorded for 'food and live animals' by 2.1%, 'miscellaneous manufactured articles' by 2.0%, and 'machinery and transport equipment' by 1.1%.

The **terms of trade figures in Q1 2015, compared to Q4 2014, reached 100.6%** (in Q4 2014 they were 100.0%). A positive value of terms of trade was recorded in 'mineral fuels, lubricants and related materials' (106.8%) only. Negative values of terms of trade were recorded namely in 'chemicals and related products' (97.5%), 'food and live animals' and 'miscellaneous manufactured articles' (identically 97.6%), and 'machinery and transport equipment' (99.3%).

Information Services Unit – Headquarters

Are you interested in the latest data connected with inflation, GDP, population, wages and much more?

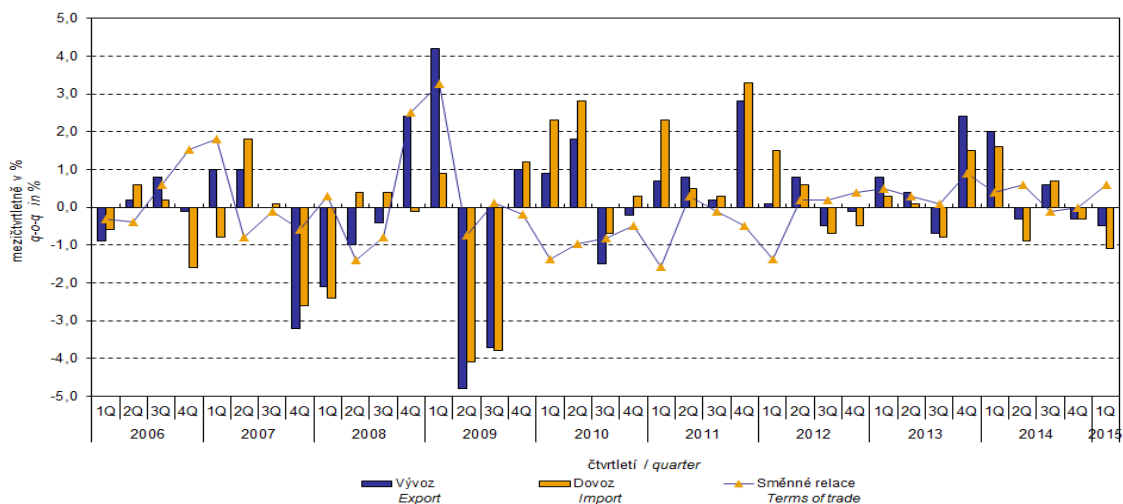
You can find them on pages of the Czech Statistical Office on the Internet: www.czso.cz

tel: +420 274 052 304, +420 274 052 425, e-mail: infoservis@czso.cz

ANALYSIS

Graf č. 1
Graph No. 1

Vývoj cen v zahraničním obchodě mezičtvrtletně
Price trends in external trade q-o-q



The external trade price development was also significantly affected by the CZK exchange rate to the major foreign currencies. The q-o-q exchange rate index includes two most important currencies from the Czech Republic's external trade point of view, i.e. EUR and USD. Q-o-q indices of the CZK exchange rate to these currencies were weighted by the weight, which pertains to those foreign currencies in the export price index and import price index, respectively.

Information Services Unit – Headquarters

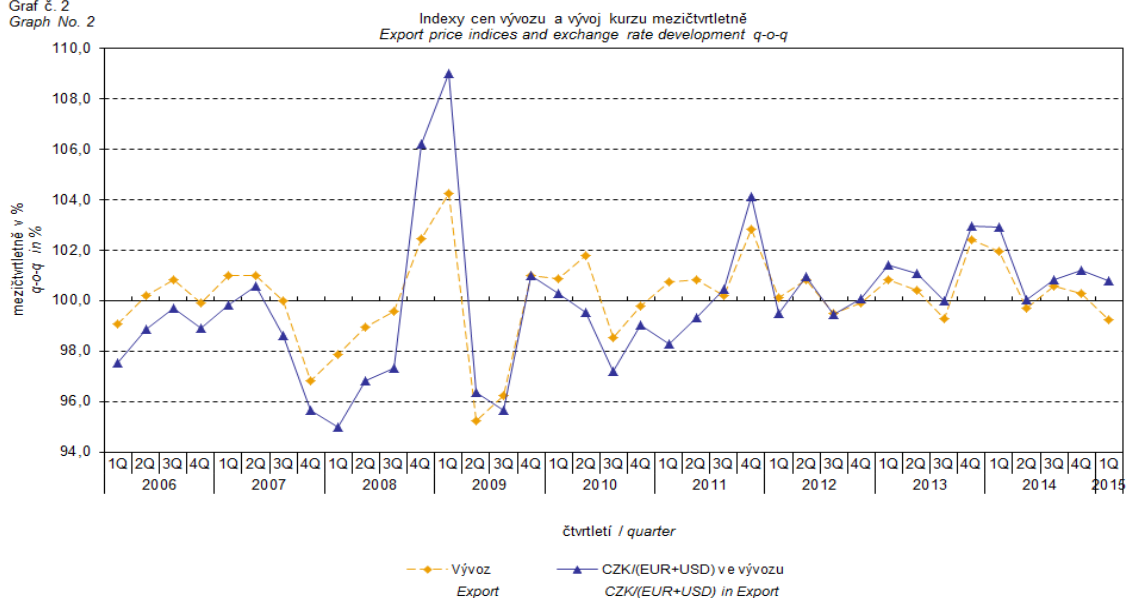
Are you interested in the latest data connected with inflation, GDP, population, wages and much more?

You can find them on pages of the Czech Statistical Office on the Internet: www.czso.cz

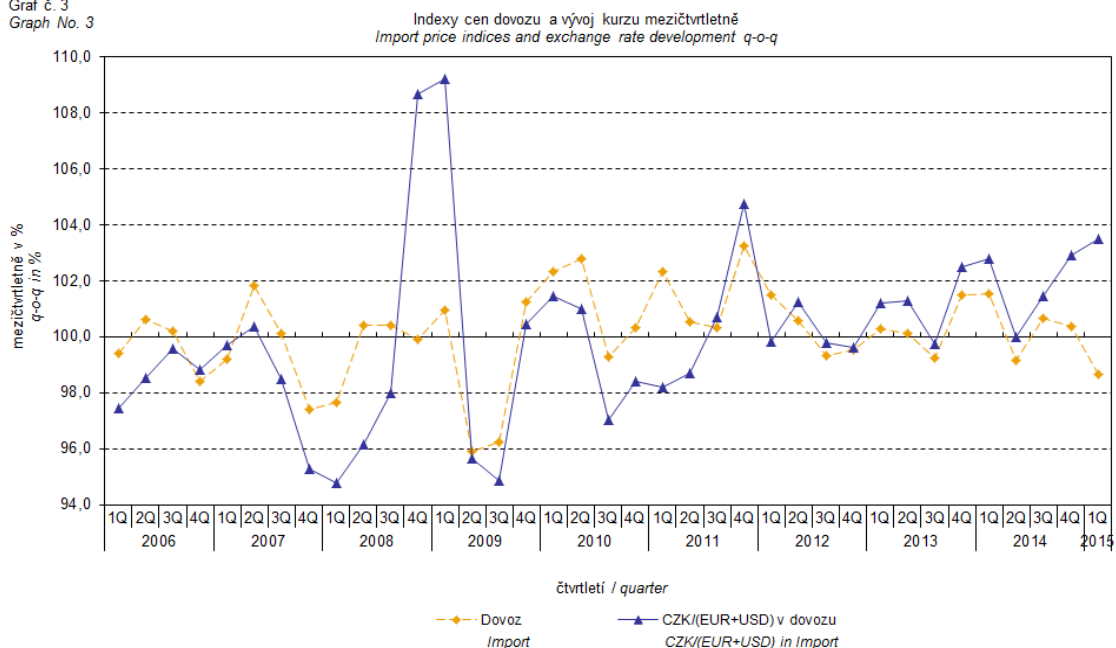
tel: +420 274 052 304, +420 274 052 425, e-mail: infoservis@czso.cz

ANALYSIS

Graf č. 2
Graph No. 2



Graf č. 3
Graph No. 3



It can be seen from Graphs Nos. 2 and 3 above that in both cases of imports and exports external trade prices have a strong relation to exchange rate impacts. Contracts with foreign entities are, as a rule, signed for a longer period of time and the longer the contract period is, the stronger the relation to exchange rates is.

Information Services Unit – Headquarters

Are you interested in the latest data connected with inflation, GDP, population, wages and much more?

You can find them on pages of the Czech Statistical Office on the Internet: www.czso.cz

tel: +420 274 052 304, +420 274 052 425, e-mail: infoservis@czso.cz

ANALYSIS

Year-on-year (y-o-y) comparison:

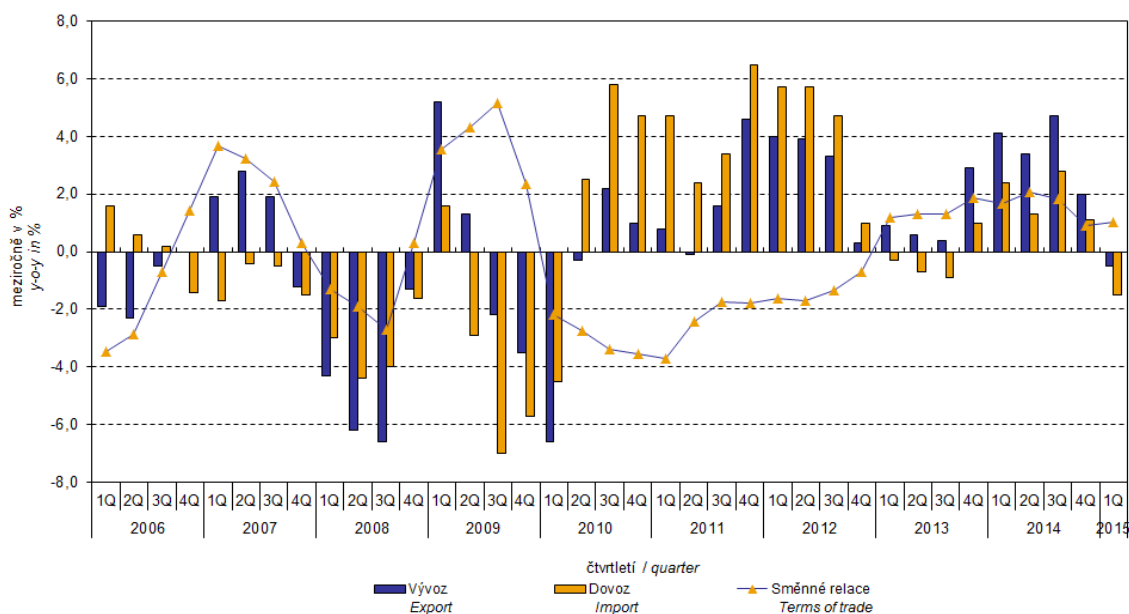
Export prices in Q1 2015 decreased by 0.5% (in Q4 2014 they rose by 2.0%), year-on-year. Among more important groups of goods, the highest drop was reported for prices of 'mineral fuels, lubricants and related materials' by 13.5%, then those of 'chemicals and related products' by 5.7%, 'crude materials, inedible, except fuels' by 5.6%, and of 'food and live animals' by 5.0%. Prices were growing for 'manufactured goods classified chiefly by material' by 1.0%, 'machinery and transport equipment' by 0.9%, and for 'miscellaneous manufactured articles' by 0.6%.

Import prices in Q1 2015 decreased by 1.5% (in Q4 2014 they rose by 1.1%), year-on-year. A highest growth of prices among the more important groups was indicated for 'mineral fuels, lubricants and related materials' by 25.0%, then for 'crude materials, inedible, except fuels' by 11.2%, and for 'chemicals and related products' by 2.7%. Prices of 'miscellaneous manufactured articles' grew by 4.8%, those of 'machinery and transport equipment' rose by 3.9%, and prices of 'manufactured goods classified chiefly by material' increased by 1.5%.

Terms of trade in Q1 2015 increased year-on-year to reach the value of 101.0% (in Q4 2014 they were 100.9%) and thus they stayed in positive values for the ninth quarter – see Graph No. 4 below. The highest positive values of terms of trade were recorded in 'mineral fuels, lubricants and related materials' (115.3%) and in 'crude materials, inedible, except fuels' (106.3%). More significant negative values of terms of trade were recorded for 'miscellaneous manufactured articles' (96.0%), 'chemicals and related products' (96.9%), and in 'machinery and transport equipment' (97.1%).

Graf č. 4
Graph No. 4

Vývoj cen v zahraničním obchodě meziročně
Price trends in external trade y-o-y



Information Services Unit – Headquarters

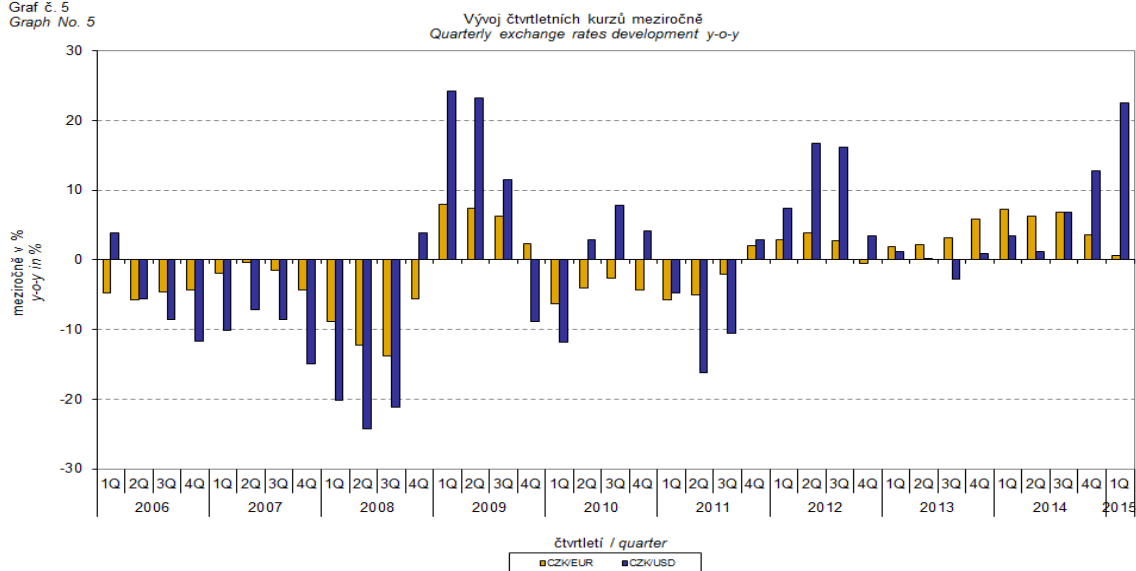
Are you interested in the latest data connected with inflation, GDP, population, wages and much more?

You can find them on pages of the Czech Statistical Office on the Internet: www.czso.cz

tel: +420 274 052 304, +420 274 052 425, e-mail: infoservis@czso.cz

ANALYSIS

Graf č. 5
Graph No. 5



External trade price indices adjusted y-o-y for exchange rate influence

The CZSO also carries out calculations of year-on-year external trade price indices adjusted for effects of exchange rate. The method is prices in foreign currencies reported in the current month are **converted** into Czech crowns by the **exchange rate** of the same month **of the last year**. Then they are used for the weighted mean calculation along with prices reported in CZK. The year-on-year adjusted price index is then calculated the way that this exchange rate adjusted base price index is related to the non-adjusted base price index of the same month of the last year. **Differences among adjusted and non-adjusted price indices may be substantial**. They can be clearly seen in Graphs Nos. 6 and 7 for November 2013 and December 2013, for instance.

The method employed does not enable, for many practical reasons, to carry out 100% exchange rate adjustment because all trade transactions concluded in foreign currencies are not reported in foreign currencies. This share is up to 30%. It follows from the aforementioned, that **at the full exchange rate adjustment differences** in between the price indices published and the exchange rate adjusted price indices would **be even larger**.

The aforementioned exchange rate adjusted indices can be used to form the exchange rate adjusted breakdown of price indices increments. Table 1, last but one page, gives the **published and exchange rate adjusted breakdowns of increments** of export and import price indices, expanded to the most important two-digit code groups of the SITC 7. These breakdowns illustrate, in a good manner, how many percentage points each of the groups "exchange rate contributed" to the index.

It holds in general that the effects of exchange rate decrease the value of price indices in external trade if CZK is strengthening to foreign currencies in total. Conversely, the effects of

Information Services Unit – Headquarters

Are you interested in the latest data connected with inflation, GDP, population, wages and much more?

You can find them on pages of the Czech Statistical Office on the Internet: www.czso.cz

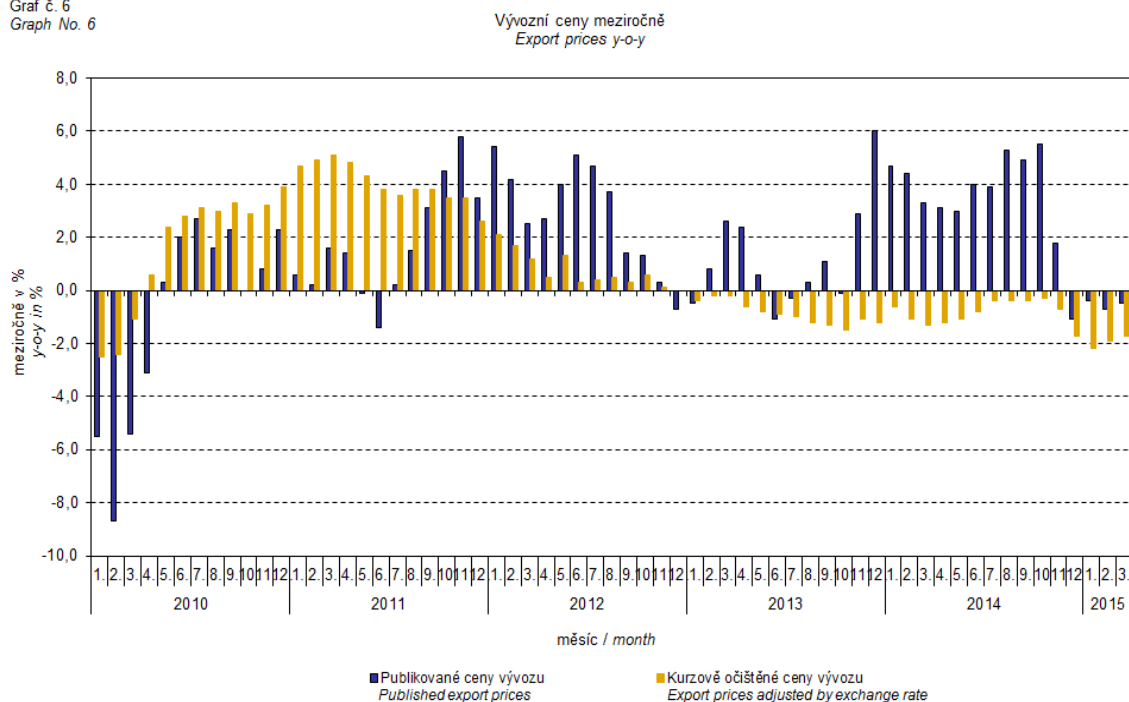
tel: +420 274 052 304, +420 274 052 425, e-mail: infoservis@czso.cz

ANALYSIS

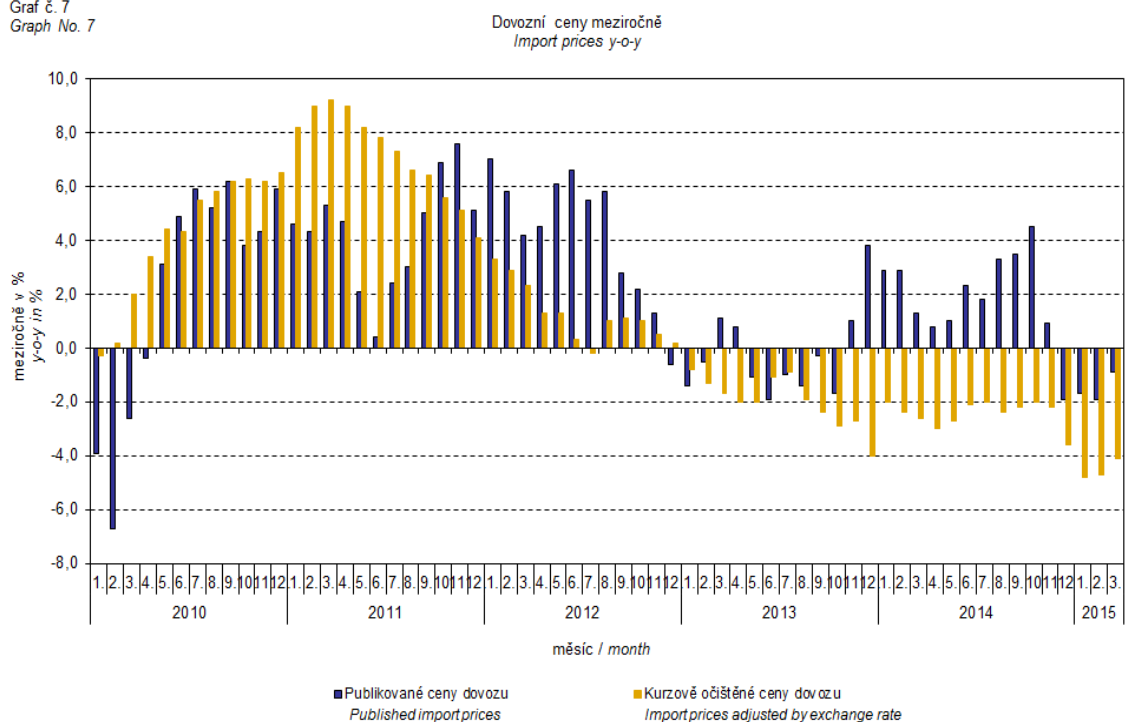
exchange rate push the price indices up if CZK is weakening to foreign currencies in total. It is obvious from following Graphs Nos. 6 and 7 how significant was the exchange rate impact on the value of export and import price indices.

ANALYSIS

Graf č. 6
Graph No. 6



Graf č. 7
Graph No. 7



Information Services Unit – Headquarters

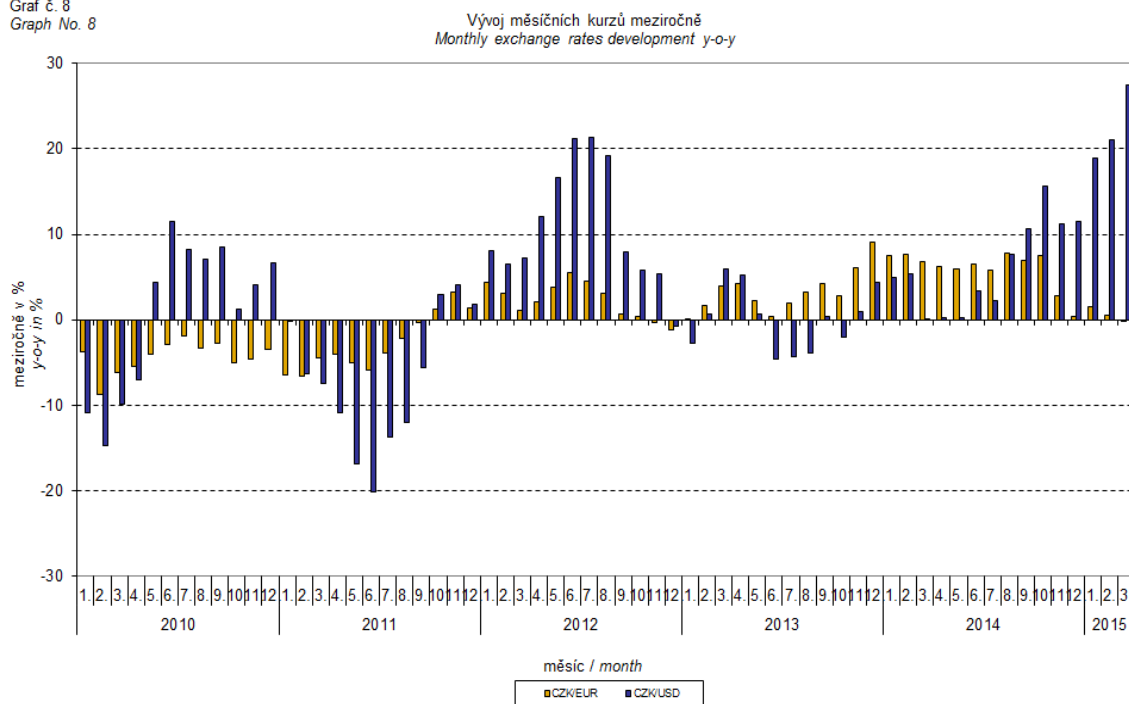
Are you interested in the latest data connected with inflation, GDP, population, wages and much more?

You can find them on pages of the Czech Statistical Office on the Internet: www.czso.cz

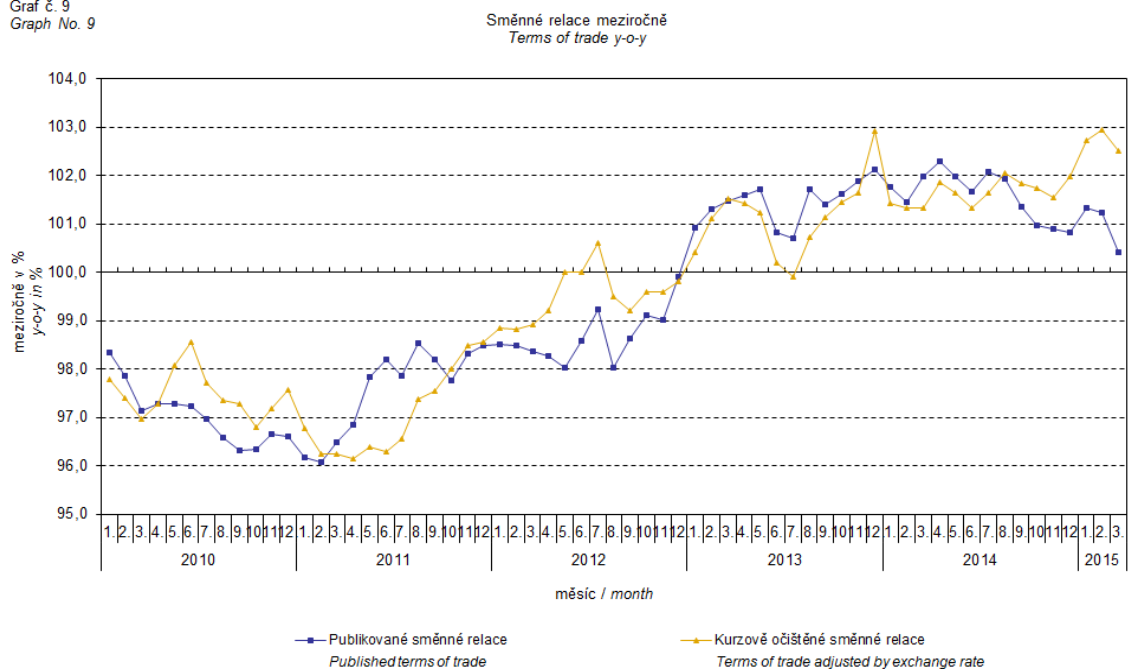
tel: +420 274 052 304, +420 274 052 425, e-mail: infoservis@czso.cz

ANALYSIS

Graf č. 8
Graph No. 8



Graf č. 9
Graph No. 9



It can be seen from Graph No. 9 how the exchange rate influences the value of the year-on-year terms of trade.

Information Services Unit – Headquarters

Are you interested in the latest data connected with inflation, GDP, population, wages and much more?

You can find them on pages of the Czech Statistical Office on the Internet: www.czso.cz

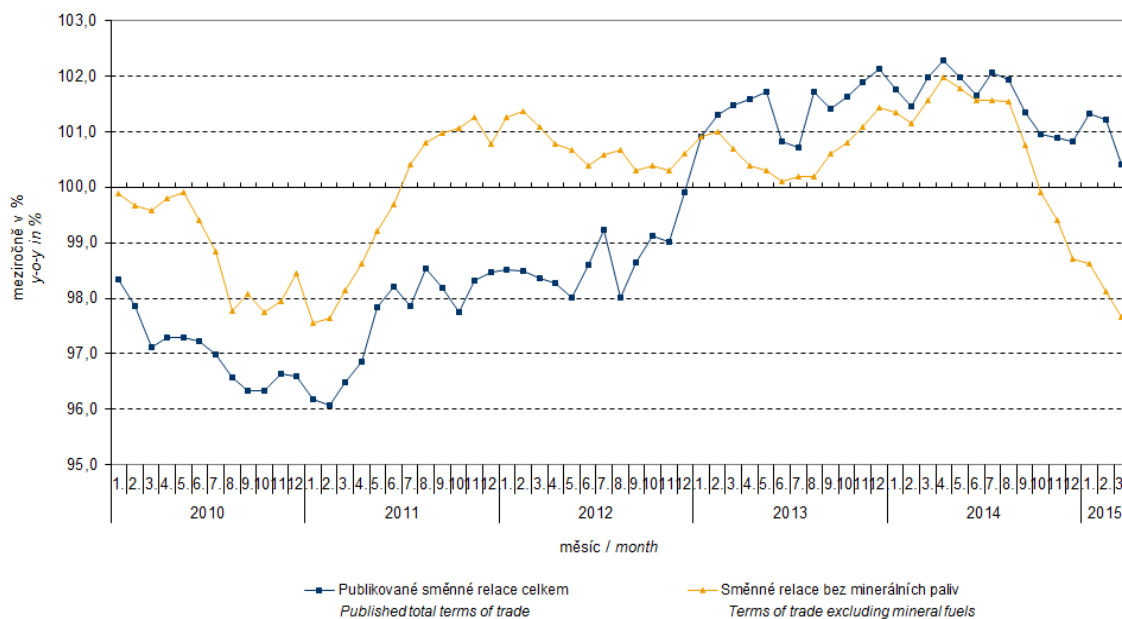
tel: +420 274 052 304, +420 274 052 425, e-mail: infoservis@czso.cz

ANALYSIS

Graph No. 10 demonstrates how the value of terms of trade would develop if the observed groups would not include that of 'mineral fuels, lubricants and related materials'.

Graf č. 10
Graph No. 10

Publikované směnné relace a směnné relace s vyloučením minerálních paliv meziročně
Published terms of trade and terms of trade excluding mineral fuels y-o-y



It can be observed in Graph No. 10 that 'mineral fuels, lubricants and related materials' decreased the overall value of y-o-y terms of trade till Q4 2012. In Q1 2013 the situation began to reverse and 'mineral fuels, lubricants and related materials' have had again an upward effect on the value of terms of trade. It is, of course, related to the world market price development, especially in crude oil. Import prices, which, compared to export prices, include a higher proportion of crude materials, respond in a more sensitive way to price turbulences and therefore when prices of crude materials go up, terms of trade, as a rule, go down and, conversely, when prices of crude materials fall, terms of trade grow.

Closing summary

The exchange rate effects in **Q1 2015** caused a year-on-year decrease in both import and export prices was getting slower (the external trade price decline would be deeper without exchange rate effects). Export prices decreased less than import ones, year-on-year, and therefore terms of trade remained in positive values. Yet if exchange rate non-adjusted, terms of trade would be growing faster. Values free of the exchange rate effects correspond to exchange rate adjusted indices – see graphs Nos. 6, 7, and 9.

Information Services Unit – Headquarters

Are you interested in the latest data connected with inflation, GDP, population, wages and much more?

You can find them on pages of the Czech Statistical Office on the Internet: www.czso.cz

tel: +420 274 052 304, +420 274 052 425, e-mail: infoservis@czso.cz

ANALYSIS

Tabulka 1: Rozklad přírůstků publikovaných a kurzově očištěných indexů cen vývozu a dovozu za březen 2015
Table 1: Breakdown of export and import price indices - published and exchange rate adjusted for March 2015

SITC	Název Name	Publikované Published				Očištěné Adjusted			
		Meziměsíční M-o-m	Meziroční Year-on-year			Meziměsíční M-o-m	Meziroční Year-on-year		
			03/2015	01/2015	02/2015		03/2015	03/2015	01/2015
Rozklad přírůstků indexů vývozních cen <i>Breakdown of export price indices</i>									
	Celkem <i>Total</i>	-0,4	-0,4	-0,7	-0,5	0,0	-2,2	-1,9	-1,7
0	Potraviny a živá zvířata <i>Food and live animals</i>	0,0	-0,2	-0,2	-0,2	0,0	-0,2	-0,2	-0,2
1	Nápoje a tabák <i>Beverages and tobacco</i>	0,0	0,0	0,0	0,0	0,0	0,0	0,0	0,0
2	Suroviny nepoživatelné, s výjimkou paliv <i>Crude materials, inedible, except fuels</i>	0,0	-0,2	-0,2	-0,1	0,1	-0,2	-0,3	-0,2
3	Minerální paliva, maziva a příbuzné materiály <i>Mineral fuels, lubricants and related materials</i>	-0,1	-0,6	-0,4	-0,5	-0,1	-0,7	-0,4	-0,5
4	Živočišné a rostlinné oleje <i>Animal and vegetable oils, fats and waxes</i>	0,0	0,0	0,0	0,0	0,0	0,0	0,0	0,0
5	Chemikálie a příbuzné výrobky <i>Chemicals and related products</i>	0,1	-0,3	-0,5	-0,4	0,1	-0,4	-0,5	-0,5
6	Tržní výrobky tříděné hlavně podle materiálu <i>Manufactured goods classified chiefly by material</i>	-0,2	0,3	0,2	0,0	-0,1	0,0	0,0	-0,1
7	Stroje a dopravní prostředky - z toho: <i>Machinery and transport equipment - thereof:</i>	-0,2	0,5	0,4	0,6	0,0	-0,6	-0,4	-0,2
74	Stroje a zařízení všeobecně užívané v průmyslu, j.n. <i>General industrial machinery and equipment, n.e.s.</i>	-0,1	0,0	0,0	0,0	0,0	-0,1	0,0	-0,1
77	Elektrická zařízení, přístroje a spotřebiče, j.n. <i>Electrical machinery, apparatus and appliances, n.e.s.</i>	-0,1	0,1	0,1	0,1	0,0	-0,1	-0,1	0,0
78	Silniční vozidla <i>Road vehicles (including air-cushion vehicles)</i>	-0,1	0,5	0,4	0,3	0,0	0,2	0,2	0,2
8	Průmyslové spotřební zboží <i>Miscellaneous manufactured articles</i>	0,0	0,1	0,0	0,1	0,0	-0,1	-0,1	0,0
Rozklad přírůstků indexů dovozních cen <i>Breakdown of import price indices</i>									
	Celkem <i>Total</i>	0,3	-1,7	-1,9	-0,9	0,2	-4,8	-4,7	-4,1
0	Potraviny a živá zvířata <i>Food and live animals</i>	0,1	-0,2	-0,1	0,0	0,0	-0,3	-0,1	-0,1
1	Nápoje a tabák <i>Beverages and tobacco</i>	0,0	0,0	0,0	0,0	0,0	0,0	0,0	0,0
2	Suroviny nepoživatelné, s výjimkou paliv <i>Crude materials, inedible, except fuels</i>	0,0	-0,2	-0,3	-0,3	0,0	-0,3	-0,4	-0,4
3	Minerální paliva, maziva a příbuzné materiály <i>Mineral fuels, lubricants and related materials</i>	0,1	-3,2	-3,2	-2,9	0,0	-3,8	-3,8	-3,7
4	Živočišné a rostlinné oleje <i>Animal and vegetable oils, fats and waxes</i>	0,0	0,0	0,0	0,0	0,0	0,0	0,0	0,0
5	Chemikálie a příbuzné výrobky <i>Chemicals and related products</i>	0,0	-0,2	-0,4	-0,3	0,0	-0,4	-0,5	-0,4
6	Tržní výrobky tříděné hlavně podle materiálu <i>Manufactured goods classified chiefly by material</i>	-0,1	0,3	0,3	0,3	0,0	0,0	0,1	0,2
7	Stroje a dopravní prostředky - z toho: <i>Machinery and transport equipment - thereof:</i>	0,2	1,4	1,4	1,8	0,2	0,0	0,0	0,3
74	Stroje a zařízení všeobecně užívané v průmyslu, j.n. <i>General industrial machinery and equipment, n.e.s.</i>	0,0	0,0	0,0	0,0	0,0	-0,1	-0,1	-0,1
75	Kancelářské stroje a zař. k automat. zpracování dat <i>Office machines and automatic data-processing machines</i>	0,1	0,4	0,4	0,6	0,1	0,1	0,1	0,2
77	Elektrická zařízení, přístroje a spotřebiče, j.n. <i>Electrical machinery, apparatus and appliances, n.e.s.</i>	0,0	0,5	0,5	0,6	0,0	0,1	0,2	0,2
78	Silniční vozidla <i>Road vehicles (including air-cushion vehicles)</i>	0,0	0,0	-0,1	0,0	0,0	-0,1	-0,1	0,0
8	Průmyslové spotřební zboží <i>Miscellaneous manufactured articles</i>	0,0	0,4	0,4	0,5	0,0	0,0	0,0	0,0

Information Services Unit – Headquarters

Are you interested in the latest data connected with inflation, GDP, population, wages and much more?

You can find them on pages of the Czech Statistical Office on the Internet: www.czso.cz

tel: +420 274 052 304, +420 274 052 425, e-mail: infoservis@czso.cz

ANALYSIS

Closing table gives published external trade price indices **without adjustment**.

Tabulka 2: Indexy cen vývozu a dovozu v 1. čtvrtletí 2015

Table 2: Export and import price indices in Q1 2015

SITC	Název Name	Stejně období předchozího roku = 100 Corresponding period of previous year = 100				
		4Q/2014	1/2015	2/2015	3/2015	1Q/2015
Indexy vývozních cen Export price indices						
	Celkem Total	102,0	99,6	99,3	99,5	99,5
0	Potraviny a živá zvířata Food and live animals	96,5	95,0	95,2	94,9	95,0
1	Nápoje a tabák Beverages and tobacco	97,2	105,3	104,2	103,8	104,4
2	Suroviny nepoživatelné, s výjimkou paliv Crude materials, inedible, except fuels	101,0	95,0	92,7	95,5	94,4
3	Minerální paliva, maziva a příbuzné materiály Mineral fuels, lubricants and related materials	91,6	84,1	88,8	86,7	86,5
4	Živočišné a rostlinné oleje Animal and vegetable oils, fats and waxes	98,8	95,8	95,7	94,1	95,2
5	Chemikálie a příbuzné výrobky Chemicals and related products	102,2	95,2	93,0	94,7	94,3
6	Tržní výrobky tříděné hlavně podle materiálu Manufactured goods classified chiefly by material	104,1	101,8	101,0	100,3	101,0
7	Stroje a dopravní prostředky Machinery and transport equipment	102,5	100,9	100,8	101,0	100,9
8	Průmyslové spotřební zboží Miscellaneous manufactured articles	102,5	100,9	100,2	100,6	100,6
Indexy dovozních cen Import price indices						
	Celkem Total	101,1	98,3	98,1	99,1	98,5
0	Potraviny a živá zvířata Food and live animals	100,7	96,7	98,9	100,2	98,6
1	Nápoje a tabák Beverages and tobacco	104,4	100,6	100,2	100,9	100,5
2	Suroviny nepoživatelné, s výjimkou paliv Crude materials, inedible, except fuels	94,4	89,4	87,9	89,1	88,8
3	Minerální paliva, maziva a příbuzné materiály Mineral fuels, lubricants and related materials	87,1	74,0	74,6	76,4	75,0
4	Živočišné a rostlinné oleje Animal and vegetable oils, fats and waxes	98,5	99,7	101,0	102,1	100,9
5	Chemikálie a příbuzné výrobky Chemicals and related products	101,3	98,2	96,6	97,2	97,3
6	Tržní výrobky tříděné hlavně podle materiálu Manufactured goods classified chiefly by material	103,2	101,5	101,4	101,6	101,5
7	Stroje a dopravní prostředky Machinery and transport equipment	104,2	103,6	103,4	104,5	103,9
8	Průmyslové spotřební zboží Miscellaneous manufactured articles	103,4	104,4	104,8	105,2	104,8

Developed by: Vladimír Klimeš, Prices Statistics Department

Director of the Department: Jiří Mrázek, telephone: (+420) 274 052 533

Information Services Unit – Headquarters

Are you interested in the latest data connected with inflation, GDP, population, wages and much more?

You can find them on pages of the Czech Statistical Office on the Internet: www.czso.cz

tel: +420 274 052 304, +420 274 052 425, e-mail: infoservis@czso.cz