



COHESION AREA SEVEROZÁPAD



Many problems

The northwestern and western edges of *Česká kotlina* include the Northwest cohesion area. The area spreads from the border *Krušné hory* (the Ore Mountains), the whole basin of the River *Ohře*, *České středohoří* (Middle Mountains), Most and Sokolov basins as far as the foothills of *Český les* (Bohemian Forest) south of *Karlovarská vrchovina* (Highland).

Over half of the Northwest's total border length is identical to the border of the Federal Republic of Germany: to the border of Saxony in the north and Bavaria in the west. Within the Czech Republic, the area neighbours with the Northeast, Central Bohemia and Southwest cohesion areas.

The area came into being pursuant to a constitutional act in 1997 which joined together the *Karlovarský* and *Ústecký* Regions. It has 10 districts, 23 administrative territories of municipalities with extended powers and 486 municipalities, of which 74 towns. 12% of the area's population live in municipalities with less 1 000 inhabitants and 62% in municipalities with more than 10 000 inhabitants (including 13% of the population living in the regional towns of *Karlovy Vary* and *Ústí nad Labem*).

Lignite mining, coal-burning power stations, heavy industry and partially pollution from abroad heavily disturbed the environment in the whole area.

The area was greatly affected by the political development since the 1930s too. Little indigenous population remained there. In the nationwide comparison, the most significant minorities include Slovaks (especially in the *Karlovarský Region*) and Germans.

Large differences in unemployment rate

There are similar climatic and geographical conditions throughout this cohesion area. The area lies in the basins of the River *Ploučnice* and especially the River *Ohře* which makes up the area's west-east axis. *Krušné hory* (Mountains) constitute the northern border of this cohesion area.

The *Ústecký* Region occupies a dominant position as far as the size and settlement are concerned; its size is almost by a half larger than that of the *Karlovarský* Region, the population almost triplicate and the density of population is higher by more than 1.5 times. The average size of municipalities measured by population is practically identical, and the number of municipalities in the *Ústecký* Region is nearly three times the number of municipalities in the *Karlovarský* Region. The proportion of urban population is the same in both regions, and the concentration of population in the *Karlovarský* Region's capital is by a half higher than in the capital of the *Ústecký* Region.

Gross domestic product per inhabitant is about the same in both regions and is almost the lowest of all the regions of the CR. Gross value

added per employee of the *Karlovarský* Region is the lowest, *Ústecký* Region slightly exceeds the average.. In gross fixed capital formation per capita it is exactly the opposite.

The rate of unemployment in these regions differs a lot. That of the *Ústecký* Region belongs to the highest unemployment rates among all the regions of the CR and more than double compared with the *Karlovarský* Region. The situation is similar in the number of job applicants per vacancy, too. The proportion of persons employed in the primary sector is well below the average in both regions, being the lowest in the *Karlovarský* Region whatsoever, and is about half the proportion in the *Ústecký* Region. The *Karlovarský* Region's proportion of persons employed in the secondary sector is the second highest and the *Ústecký* Region's one is the third lowest. Net annual incomes per household member in the *Karlovarský* Region are by about 6% up on the *Ústecký* Region. The latter region has the largest proportion of households whose incomes do not exceed 1.5 times the subsistence level and this proportion exceeds that of the *Karlovarský* Region by a half. Average wages are the second lowest here – by about 6% down on the *Ústecký* Region. The proportion of the self-employed (including farmers) is the third lowest of all the regions; in the *Ústecký* Region it is slightly below average.

The *Karlovarský* Region has the second largest share of woodland of the CR, which is by one third higher than in the *Ústecký* Region. Its proportion of arable land is almost double, compared to the *Ústecký* Region.

Selection of topical indicators

Number of inhabitants (31.12.2004)		1,126,721	Average monthly gross wage (2004) ⁵		16,066
incl.	Foreigners with long-term stay ¹	14,828	Unemployment rate based on LFS (%; 2004)		13.1
	Foreigners with permanent residence	19,600	Employment in sectors (%; 2004)	Primary	2.4
Number of municipalities / towns (31.12.2004)		486 / 74		Secondary	39.8
Population living in the regional capital (%) ²		12.9		Tertiary	57.8
Live-born children outside marriage (%; 2004)		47.5	Completed dwellings, total (2004)		1,391
Population with university education (2004) ³	muži	6.2	incl. Dwellings in family houses (%)		59.4
	ženy	4.9	Guests in accommodation establishments, total (2004)		919,768
Economically active population (2004)		576,205	incl. Foreign nationals (%)		58.2
incl. Employers or own-account workers (%)		13.8	GDP per capita (Purchasing power parity, 2003)		12,869
			Gross fixed capital formation per capita (in CZK, 2003)		52,938
Economic activity rate (2004) ⁴	muži	70.2	Net disposable income of households per capita (CZK, 2003)		110,047
	ženy	52.3			

¹ Foreigners with visas over 90 days

² Covering all capitals, which are centres of regions (NUTS-3) comprising respective area (NUTS-2)

³ Related to population aged 15+

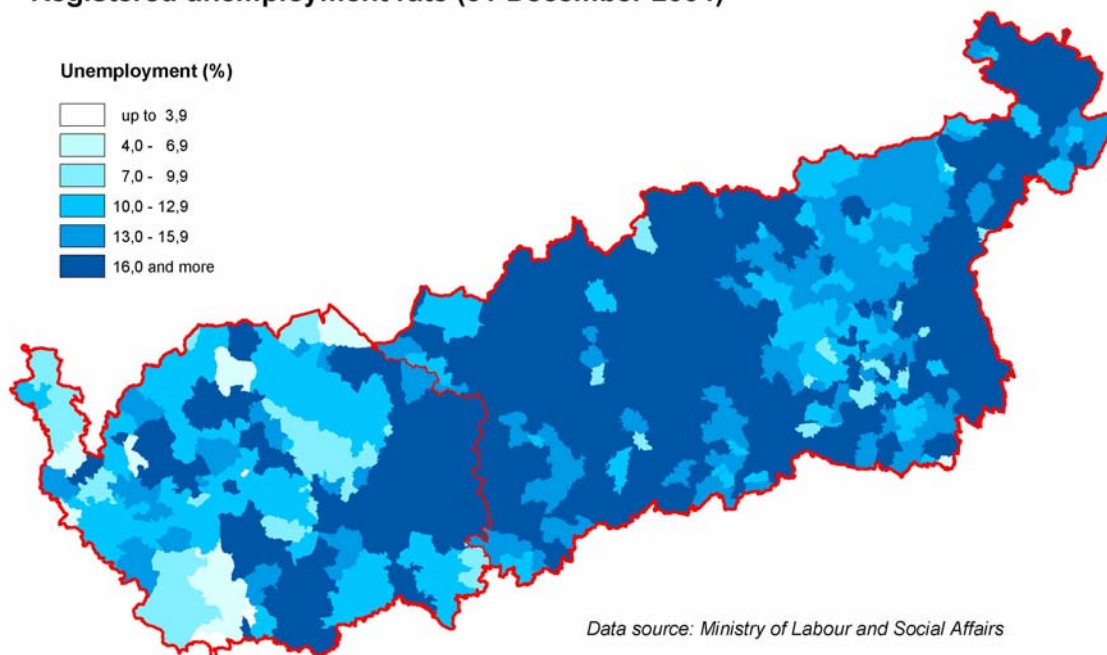
⁴ Share (%) of economically active persons from total population aged 15+

⁵ in CZK, per employee in national economy (excluding armed forces), enterprise method (i.e. by head office of enterprise)



Region	Area	Population	Population density	Life expectancy (M/W)	Registered unemployment rate	Vacancies	Dwellings completed	GDP
	Km ²	Thous.	Popul./km ²		%			CZK/popul.
	2003	31 Dec 2003	2003	2003	31 Dec 2003	31 Dec 2003	2003	2002
Karlovarský	3,314.6	304.2	91.8	71,5/77,5	10.6	1,147	524	186,482
Ústecký	5,334.9	820.9	153.9	69,7/76,9	17.9	2,745	1,226	189,543
Northwest	8,649.5	1125.1	130.1	.	15.9	3,892	1,750	188,715

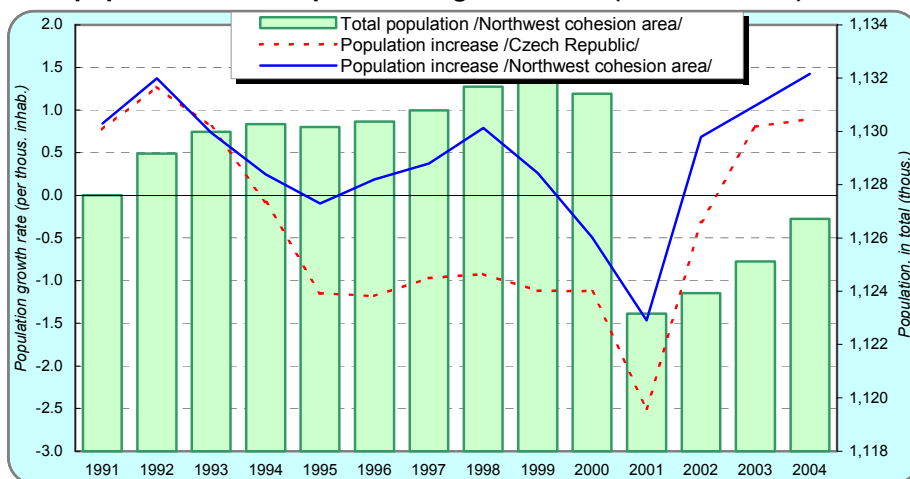
Registered unemployment rate (31 December 2004)





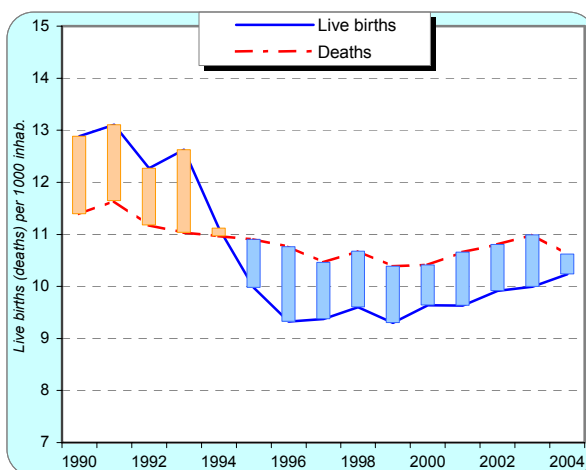
Severozápad cohesion area

Total population - development in region and CR (31 Decemeber)

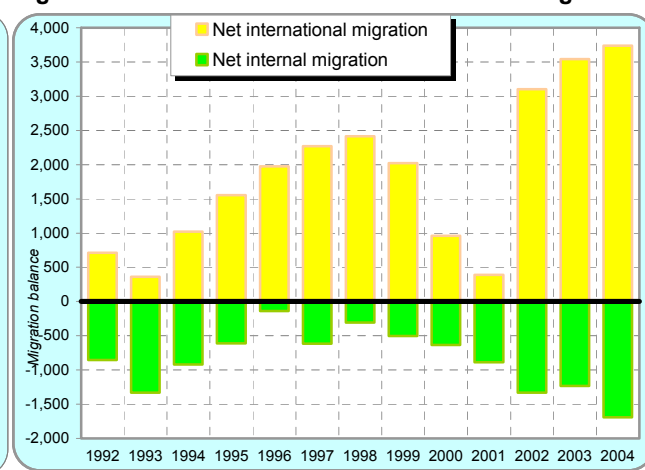


Data since 2001 reflect the Housing and Population Census (1.3.2001) results and also include foreigners who were granted long-term stays (i.e. foreigners with visas over 90 days). Population decrease 2001 was influenced mainly by Census (1.3.2001), which found out lower population than that registered by yearly demographic statistics. Population growth rate was calculated as a difference between 1 January and 31 December (in 2001 population at 1 January was recalculated by Census).

Vital statistics

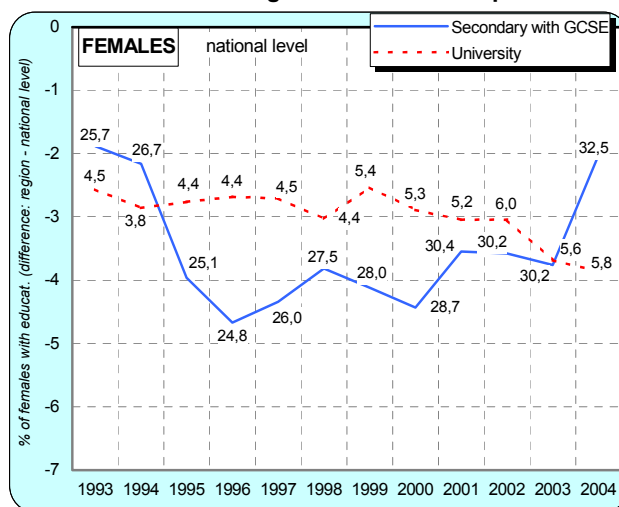
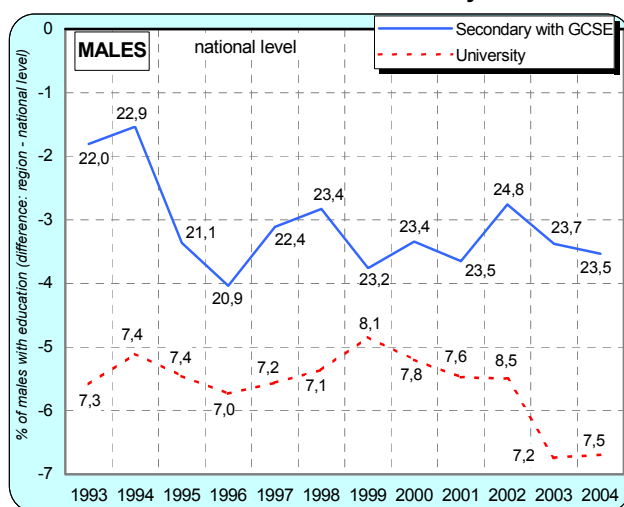


Migration balance - internal and international migration



Since 2001, foreigners who were granted long-term stays are calculated as migran

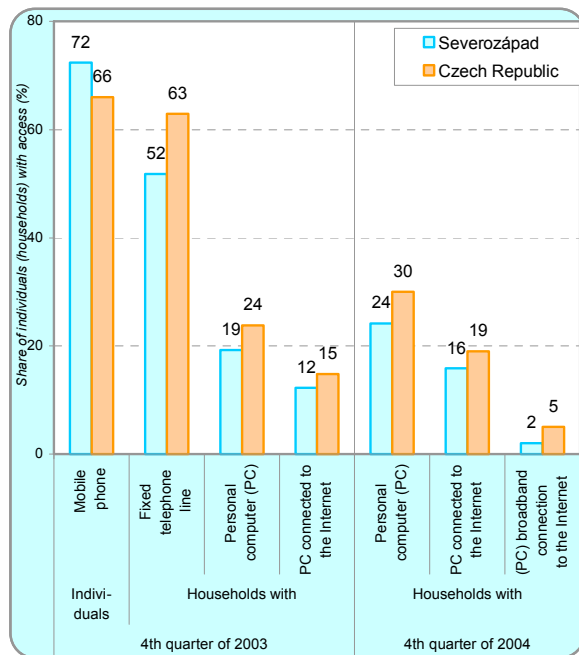
Share of males and females with secondary and university education - relation of region to the Czech Republic



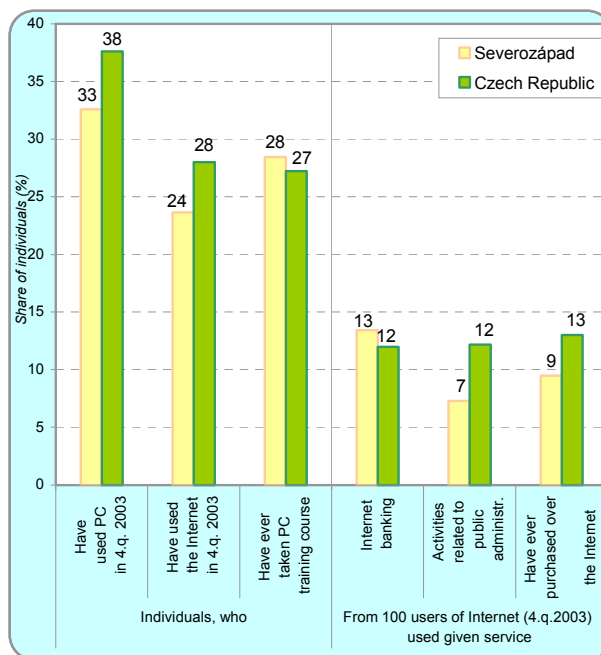
Note: Figures in graph express share of persons with secondary education with GCSE in total population aged 15+ in region, or share of persons with university education in total population aged 25+ in region



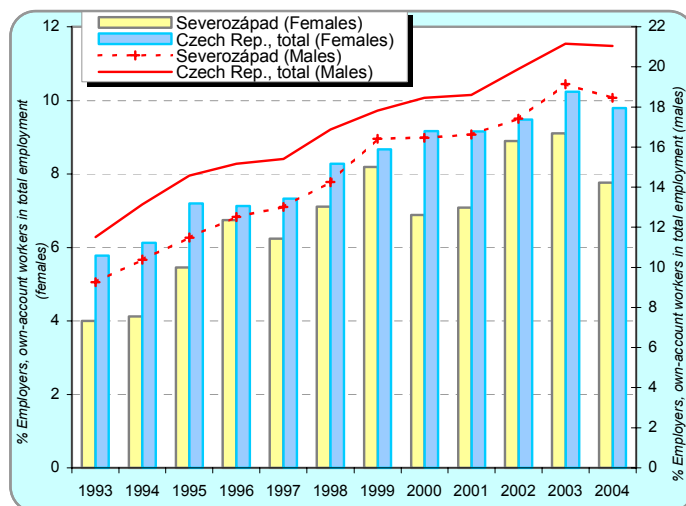
Access of households to information technologies



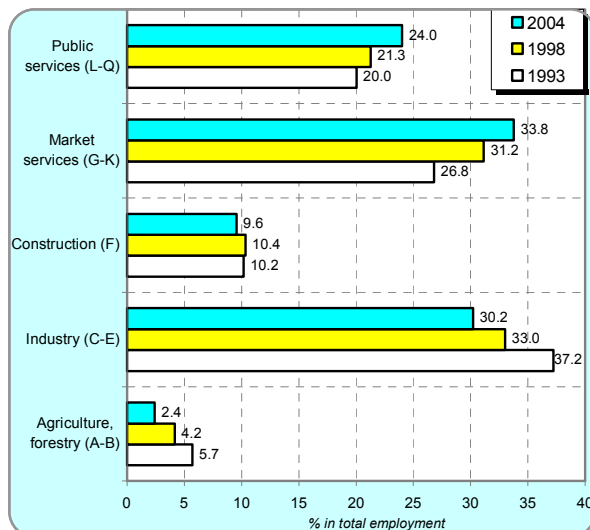
Use of Internet by individuals (aged 15+) in 4.q.2003



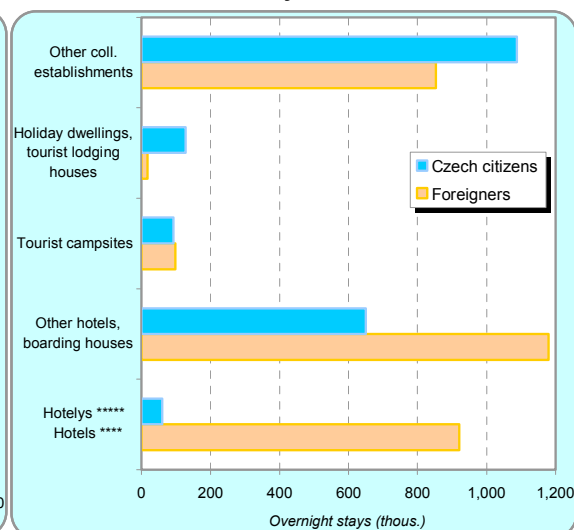
Employers and own-account workers - males, females



Employment in major sectors (groups of NACE)



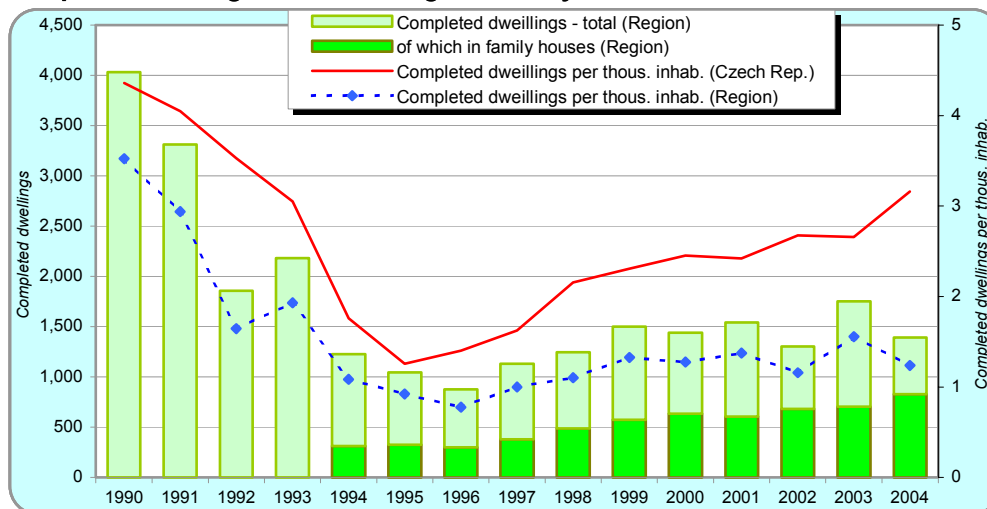
Overnight stays in collective tourist accommodation establishments in 2004 - by class





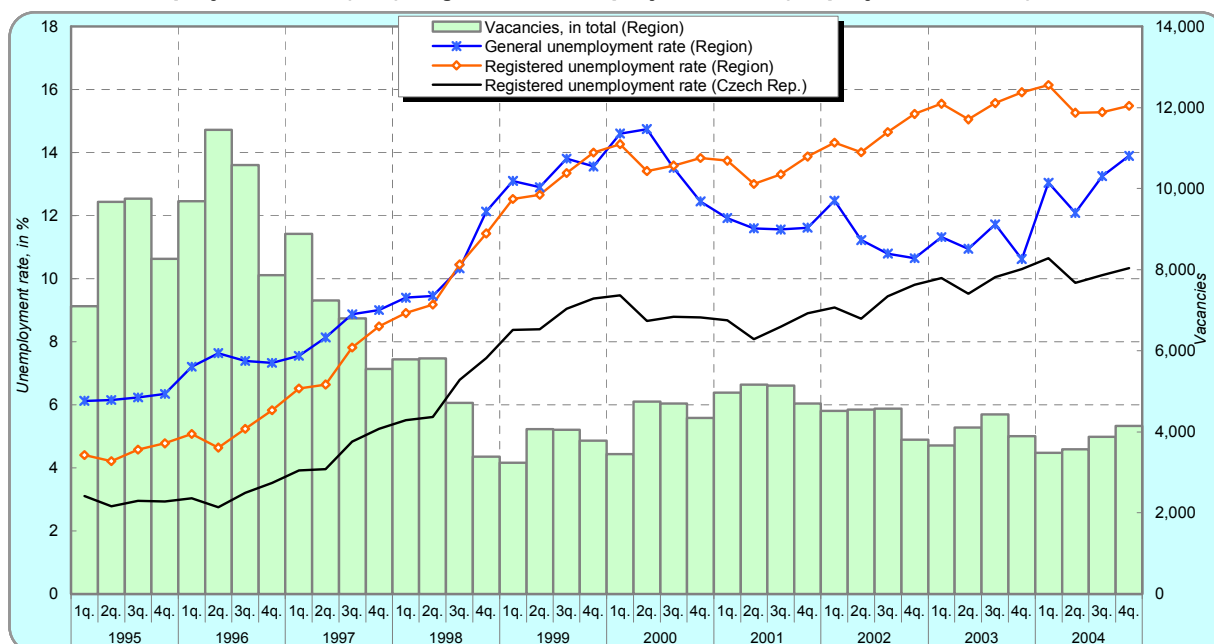
Severozápad cohesion area

Completed dwellings - in all buildings / in family houses



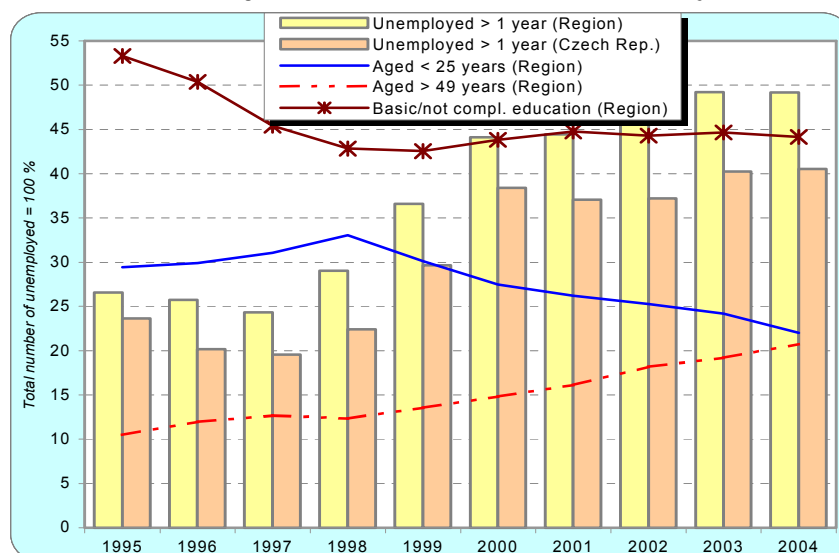
Note: data on dwellings in family houses are available since 1995

General unemployment rate (ILO), registered unemployment rate (employment offices), vacancies



Note: Registered unemployment rate refers to the end of respective quarter

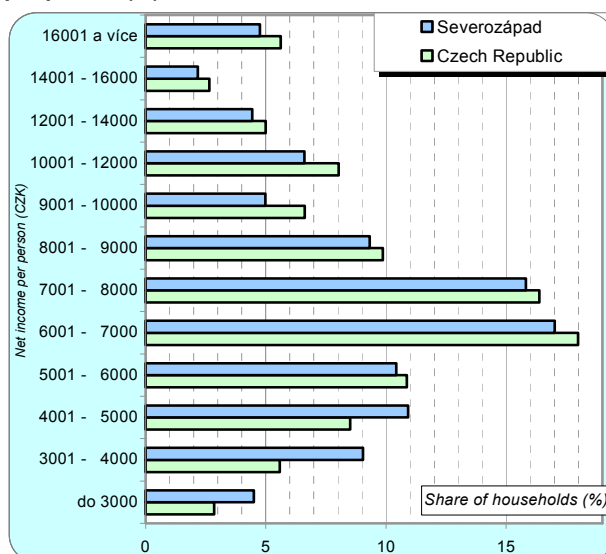
Share of selected groups in total number of unemployed*



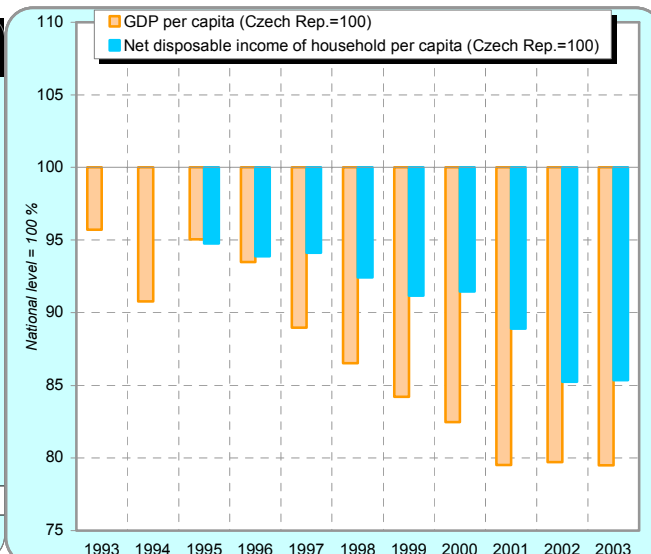
* refers to 31 December (respective year)



Distribution of households (%): monthly net money income per person (%), in CZK, Microcensus 2002

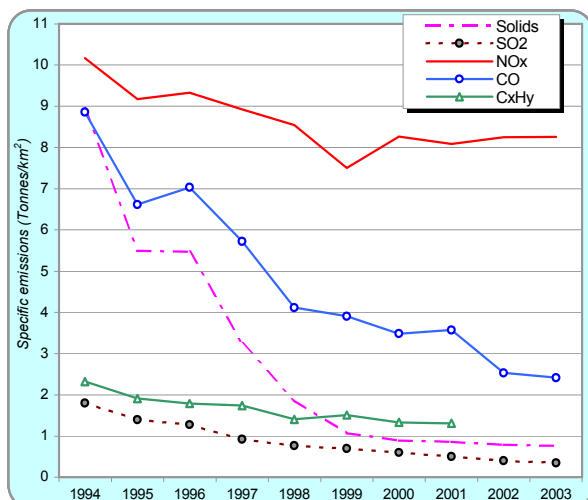


Gross domestic product and disposable income

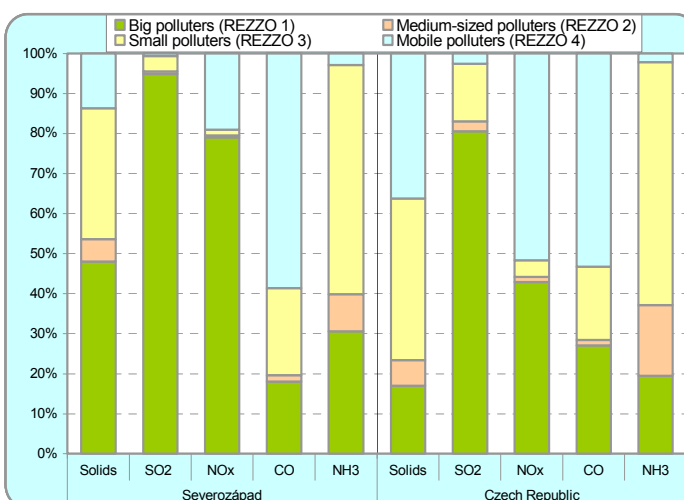


Note: Data on disposable income are available since 1995

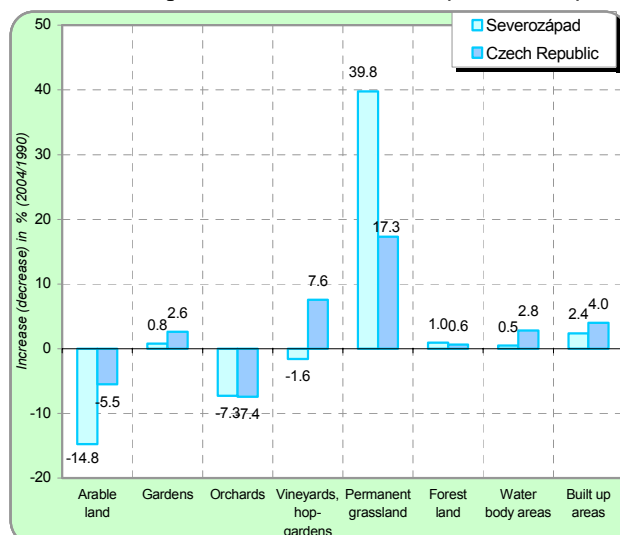
Specific emissions of main pollutants (REZZO 1-3)



Structure of main pollutants by sources in 2003



Land use - changes between 1990 and 2004 (31 December)



Land use structure (2004, 31 December)

